

**Membrane Scaling and flux decline during fertiliser drawn forward osmosis
desalination of brackish ground water**

Sherub Phuntsho^a, Fezeh Lotfi^a, Seungkwan Hong^b, Menachem Elimelech^c, Ho Kyong
Shon^{b,*}

^aCentre for Technology in Water and Wastewater, School of Civil and Environmental
Engineering, University of Technology, Sydney (UTS), Broadway, NSW 2007, Australia

^bSchool of Civil, Environmental & Architectural Engineering, Korea University, 1, 5-ka,
Anam-Dong, Sungbuk-Gu, Seoul 136-713, Republic of Korea

^cDepartment of Chemical and Environmental Engineering, P.O. Box 208286, Yale
University, New Haven, CT 06520-8286, USA

* Corresponding author: Email: Hokyong.Shon-1@uts.edu.au

List of Figures

Figure 1: A schematic diagram of the laboratory-scale forward osmosis (FO) system set up used in this study

Figure 2: Variation of water flux with time for the six different fertiliser solutions during the FDFO process for the desalination of BGW. Operating conditions are DS: 1.0 M, FS: BGW10.

Figure 3: SEM images of CTA membrane after experiment with DAP as DS and BGW as FS. a) active layer of the membrane surface, (b) both active layer and support layer of the FO membrane, (c) on the wall of the acrylic membrane cell facing FS and (d) magnified image of the scaling layer. Experimental conditions are DS: 3 M DAP, FS: BGW35

Figure 4: The EDS spectrum for the active layer of the membrane surface. Experimental conditions are DS: 3 M DAP, FS: BGW35.

Figure 5: XRD analyses of the scales deposited on the membranes surface showing the presence of (a) magnesium phosphate and (b) struvite. Operation conditions are DS: 3M DAP, FS: BGW35.

Figure 6: Variation of FO water flux with time during the FO process at different concentrations using (a) MAP and (b) DAP as DS. Operating conditions are DS: DAP/MAP, FS: BGW10.

Figure 7: Influence of feed properties on the water flux during FO process presented as a variation of water flux with operation time in the FO process using (a) BGW feed of different TDS using 3 M DAP as DS and (b) FS containing different cation composition in BGW35 using 3 M DAP as DS and (c) XRD analysis of the scaling layer formed when Mg^{2+} ion was removed from the BGW35 FS.

Figure 8: Flux recovery of the FO membrane after membrane has been fouled by inorganic foulant (a) using three different types of DS and BGW35 as FS and (b) using different

concentrations of DAP as DS and BGW10 as FS. The cleaning regime was conducted at a crossflow rate of 400 ml/min for 20 minutes except for DAP(1600) which was conducted at 1,600 ml/min crossflow cleaning.

Figure 1

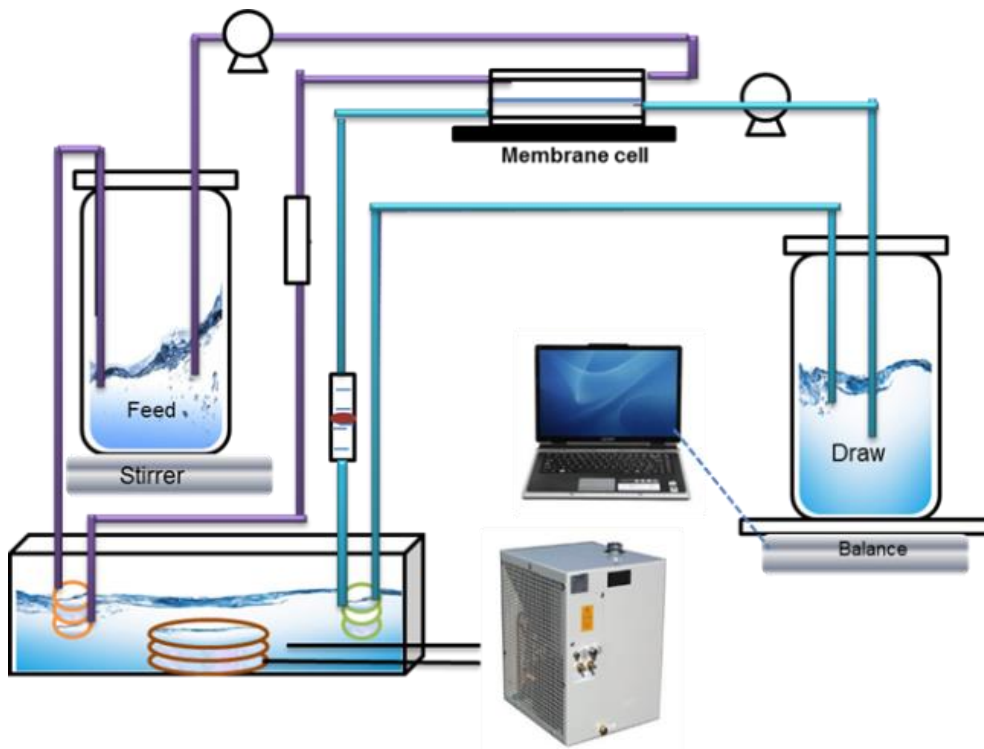


Figure 2

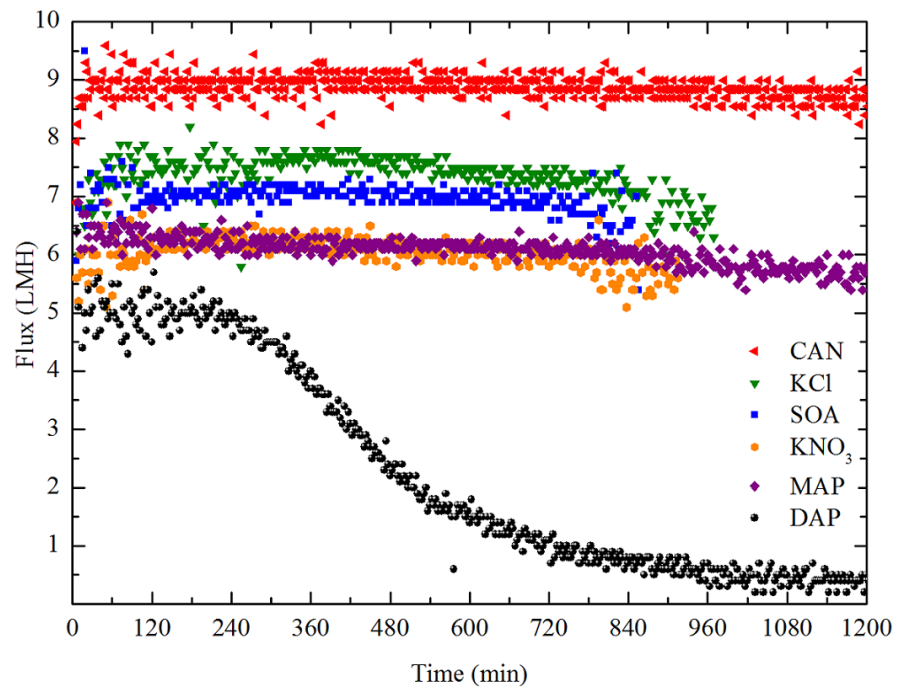
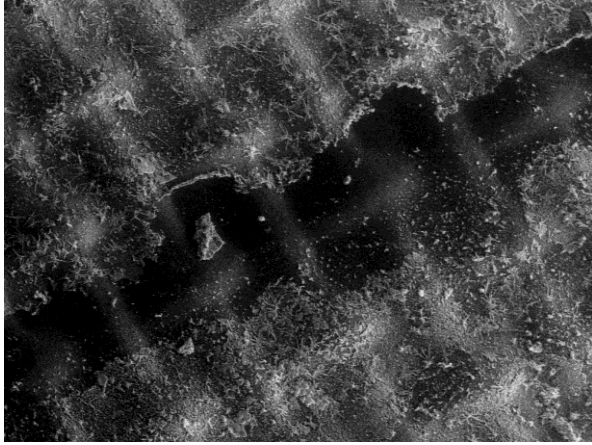
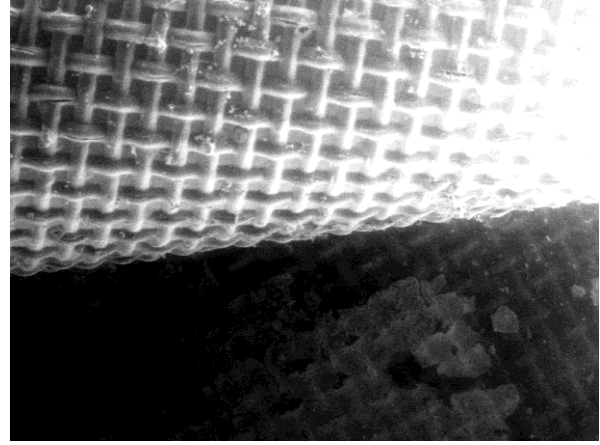


Figure 3



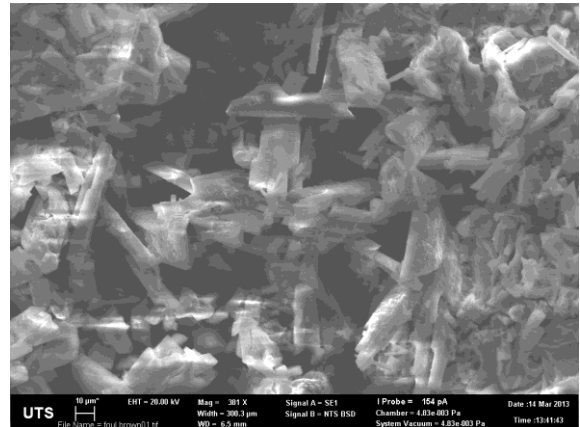
(a)



(b)



(c)



(d)

Figure 4

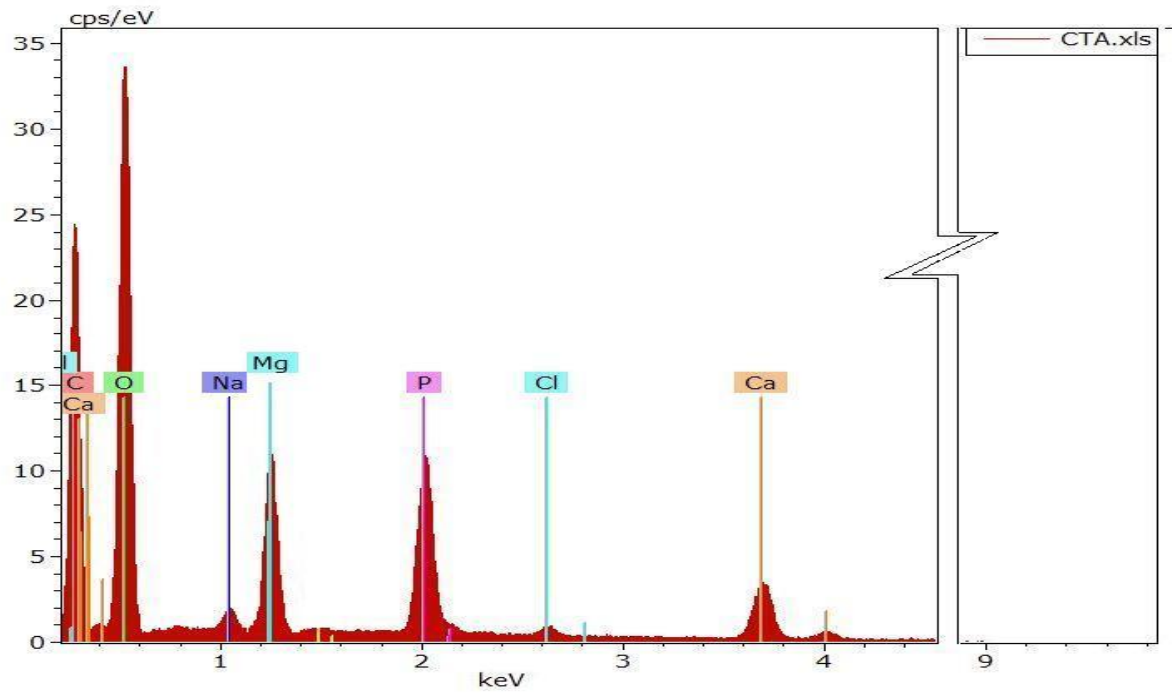


Figure 5

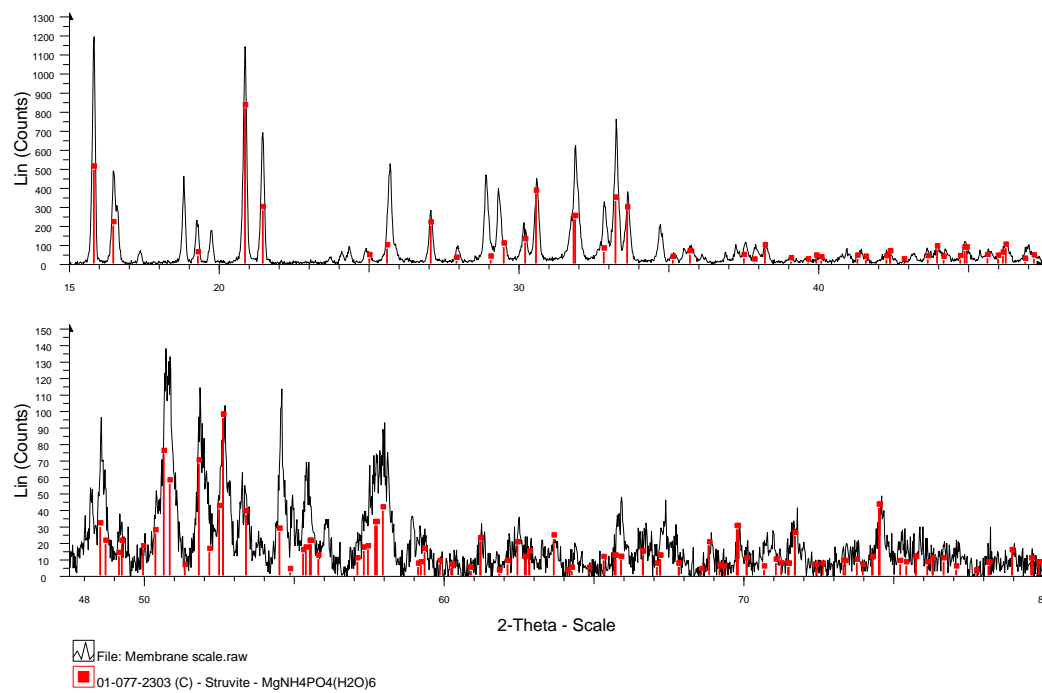
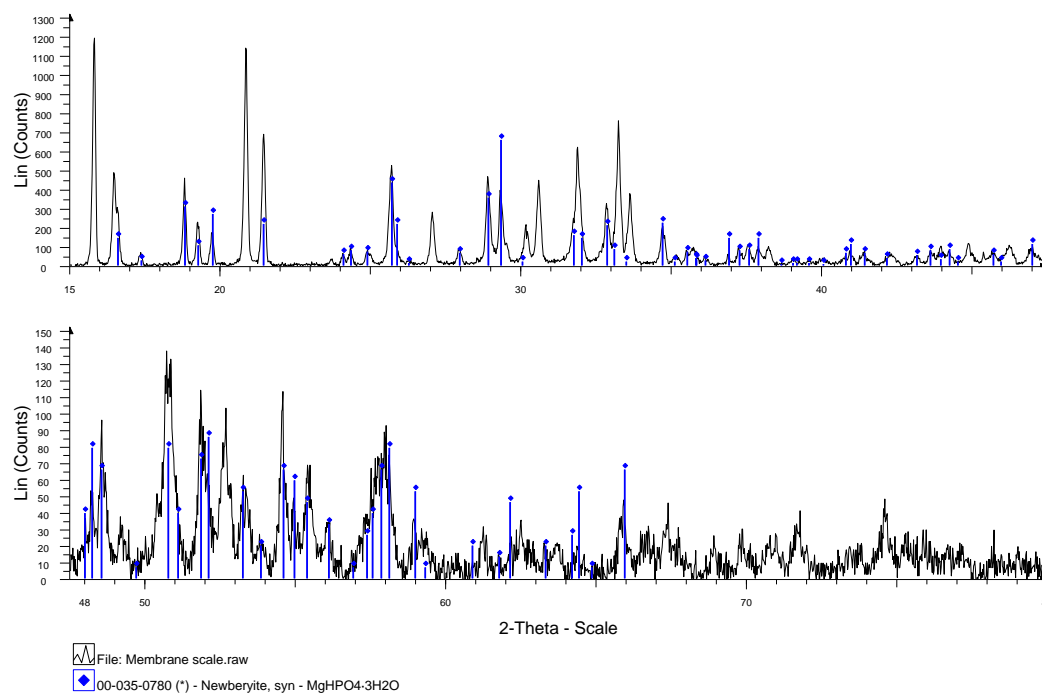
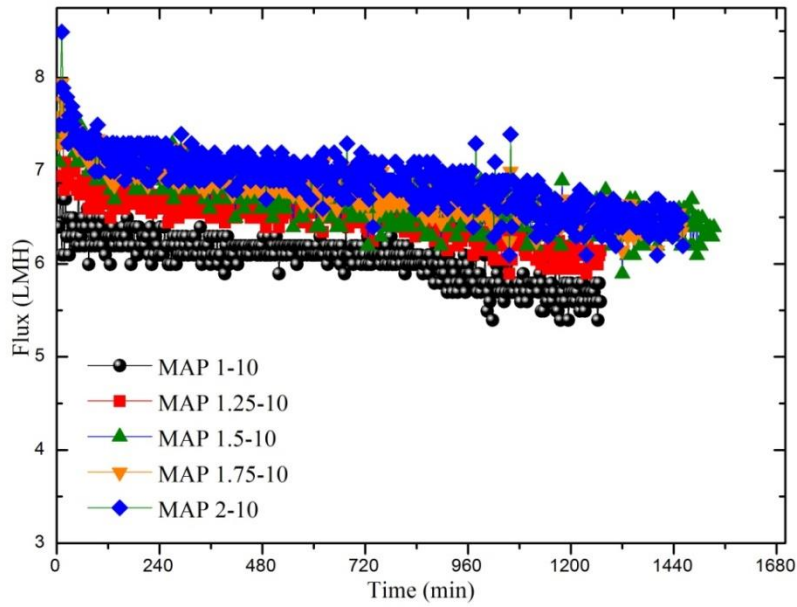
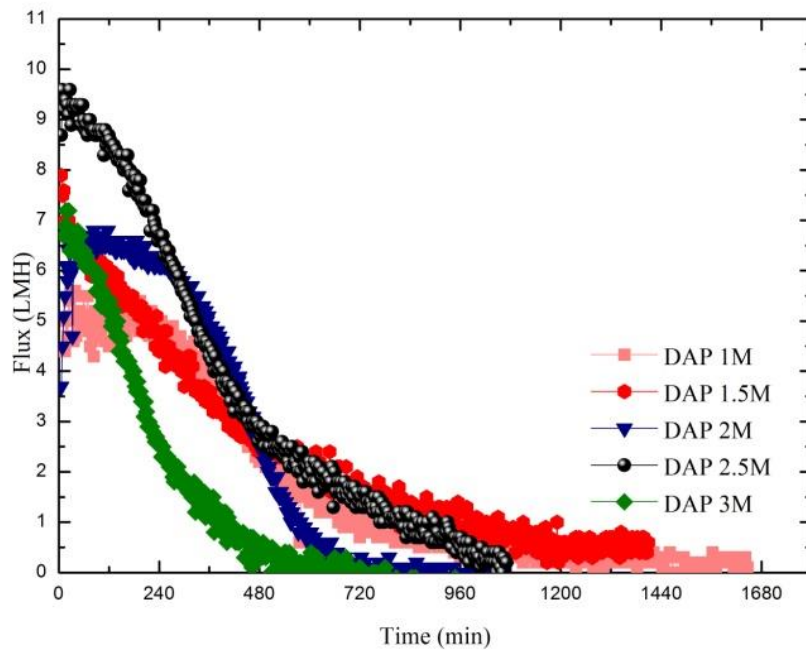


Figure 6

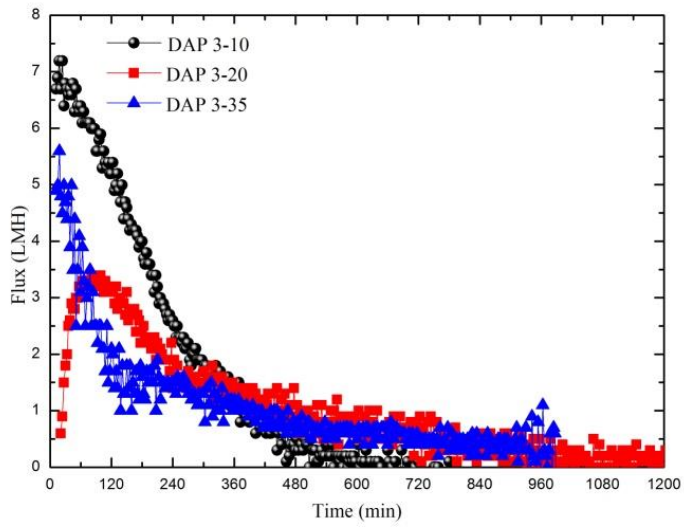


(a)

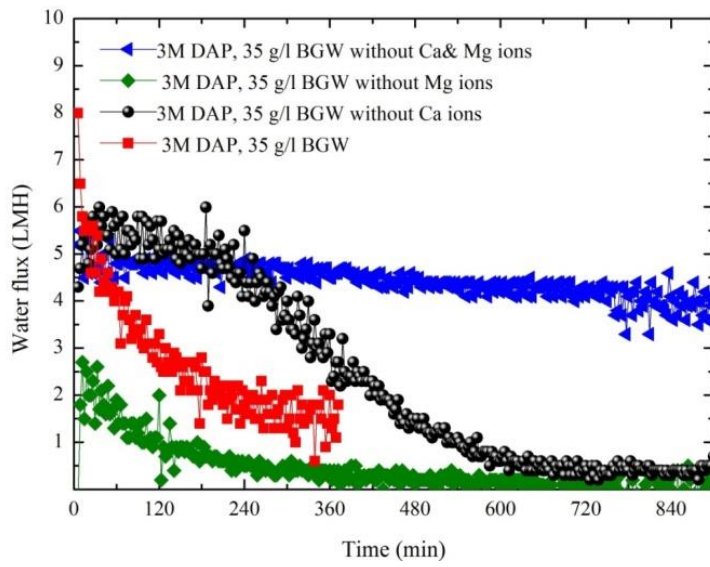


(b)

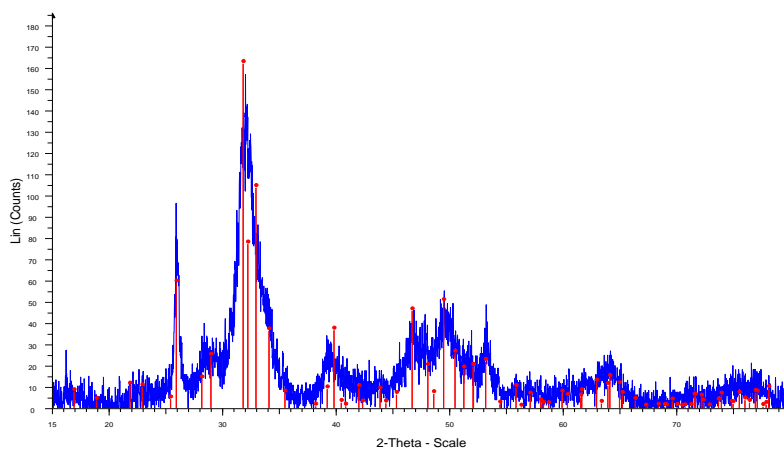
Figure 7



(a)



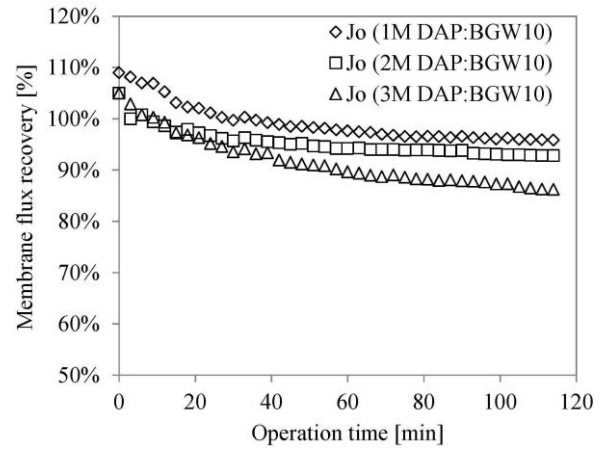
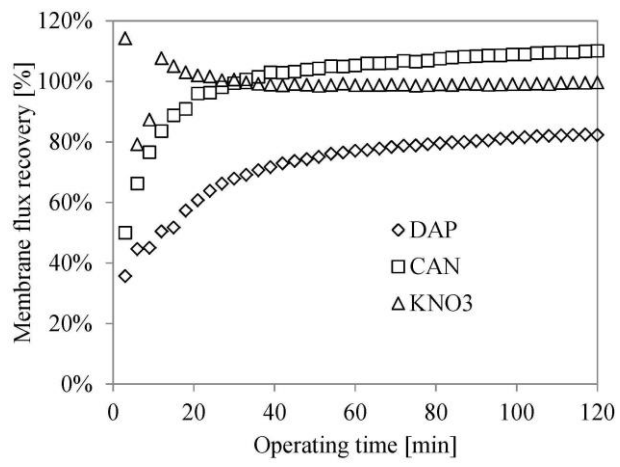
(b)



(c)

File: Membrane scale Mg.raw
01-089-6440 (C) - Hydroxylapatite, syn - Ca10.084(PO4)5.94(OH)3.39

Figure 8



(b)