

High-resolution observations of low-luminosity gigahertz-peaked spectrum and compact steep-spectrum sources

J. D. Collier,^{1,2★} S. J. Tingay,^{3,4} J. R. Callingham,^{1,4,5} R. P. Norris,^{1,2,4}
M. D. Filipović,² T. J. Galvin,^{1,2,3} M. T. Huynh,^{6,7} H. T. Intema,^{8,9} J. Marvil,¹
A. N. O’Brien,^{1,2} Q. Roper,² S. Sirothia,^{10,11} N. F. H. Tothill,² M. E. Bell,^{1,4,12}
B.-Q. For,⁷ B. M. Gaensler,^{4,5,13} P. J. Hancock,^{3,4} L. Hindson,^{14,15} N. Hurley-Walker,³
M. Johnston-Hollitt,^{14,16} A. D. Kapińska,^{4,7} E. Lenc,^{4,5} J. Morgan,³ P. Procopio,¹⁷
L. Staveley-Smith,^{4,7} R. B. Wayth,^{3,4} C. Wu,⁷ Q. Zheng,^{14,16} I. Heywood^{1,11,18}
and A. Popping^{3,4}

Affiliations are listed at the end of the paper

Accepted 2018 February 23. Received 2018 February 23; in original form 2017 June 16

ABSTRACT

We present very long baseline interferometry observations of a faint and low-luminosity ($L_{1.4\text{ GHz}} < 10^{27} \text{ W Hz}^{-1}$) gigahertz-peaked spectrum (GPS) and compact steep-spectrum (CSS) sample. We select eight sources from deep radio observations that have radio spectra characteristic of a GPS or CSS source and an angular size of $\theta \lesssim 2$ arcsec, and detect six of them with the Australian Long Baseline Array. We determine their linear sizes, and model their radio spectra using synchrotron self-absorption (SSA) and free-free absorption (FFA) models. We derive statistical model ages, based on a fitted scaling relation, and spectral ages, based on the radio spectrum, which are generally consistent with the hypothesis that GPS and CSS sources are young and evolving. We resolve the morphology of one CSS source with a radio luminosity of $10^{25} \text{ W Hz}^{-1}$, and find what appear to be two hotspots spanning 1.7 kpc. We find that our sources follow the turnover–linear size relation, and that both homogeneous SSA and an inhomogeneous FFA model can account for the spectra with observable turnovers. All but one of the FFA models do not require a spectral break to account for the radio spectrum, while all but one of the alternative SSA and power-law models do require a spectral break to account for the radio spectrum. We conclude that our low-luminosity sample is similar to brighter samples in terms of their spectral shape, turnover frequencies, linear sizes, and ages, but cannot test for a difference in morphology.

Key words: methods: data analysis – techniques: image processing – galaxies: active – galaxies: evolution – galaxies: jets – radio continuum: galaxies.

1 INTRODUCTION

Gigahertz-peaked spectrum (GPS) and compact steep-spectrum (CSS) sources are small but powerful active galactic nuclei (AGN) that have a peaked radio spectrum with a characteristic turnover frequency, and are generally hosted by elliptical galaxies (Gelderman & Whittle 1994; de Vries, Barthel & O’Dea 1997; Stanghellini 2003; Orienti 2016). GPS sources turn over (i.e. reach a maximum radio flux density) at a few GHz, or above a few GHz in the subclass of high-frequency peakers (HFPs) defined by Dallacasa et al.

(2000). CSS sources turn over at a few hundred MHz or lower and have steep ($\alpha < -0.7$)¹ spectral indices across the GHz range. Most GPS and CSS sources are symmetric, in which a two-sided structure is observed that resembles a scaled-down Fanaroff–Riley type II (FR II) galaxy (Fanaroff & Riley 1974), consisting of steep-spectrum mini-lobes and hotspots, sometimes with a weak inverted or flat-spectrum core, and weak jets. Based on their linear size (l), GPS and CSS sources are morphologically classified as compact symmetric objects (CSOs), which have linear sizes $l < 1$ kpc, or

* E-mail: Jordan.Collier@csiro.au

¹ Throughout this paper, we use $S \propto \nu^\alpha$.

medium-sized symmetric objects (MSOs; Fanti et al. 1995; An & Baan 2012), which have $l > 1$ kpc.

It is widely accepted that GPS and CSS sources are young and evolving radio sources that may develop into large-scale radio sources (e.g. Fanti et al. 1995; O’Dea 1998; Alexander 2000; Snellen et al. 2000; Polatidis & Conway 2003; Tinti & de Zotti 2006; Fanti 2009a; Randall et al. 2011; Orienti 2016). Evidence for this *youth* hypothesis includes their appearance as scaled-down versions of FR II galaxies, kinematic age estimates via proper motion measurements of their hotspot expansion speeds (Polatidis & Conway 2003; Giroletti & Polatidis 2009; Polatidis 2009), and models of their radio spectra and spectral ages (Murgia et al. 1999; Murgia 2003). If GPS/CSS sources are the youngest radio galaxies, then they are ideal objects for investigating the birth and early lives of radio emission in AGN.

However, the hypothesis that all GPS and CSS grow to large sizes is disputed, since statistical studies of the luminosity functions have revealed an overabundance of the most compact sources relative to the number of large-scale radio galaxies (Readhead et al. 1996; O’Dea & Baum 1997; An & Baan 2012; Callingham et al. 2015).

The alternative *frustration* hypothesis is that GPS and CSS sources are frustrated by interactions with dense gas and dust in their environment, which halts the expansion of the jets (van Breugel, Miley & Heckman 1984; Baum et al. 1990). Furthermore, some GPS and CSS sources have been interpreted as prematurely dying radio sources that switch off before growing to large sizes (Fanti 2009b; Orienti, Murgia & Dallacasa 2010) or recurrent radio galaxies (Baum et al. 1990; Shulevski et al. 2012). The evolutionary model presented by An & Baan (2012) suggests that each of these scenarios exists amongst the GPS and CSS population, with only ~30 per cent of sources evolving into large-scale radio galaxies.

Many multi-frequency observations do not support the frustration hypothesis, which show that the host galaxies contain gas similar to FR II hosts (Fanti et al. 1995, 2000; Siemiginowska et al. 2005; Orienti 2016). However, many observational studies of individual GPS sources suggest the presence of a dense medium that may cause significant frustration (e.g. Marr et al. 2014; Callingham et al. 2015). It is likely that the GPS and CSS population as a whole is made up of both young and frustrated sources, individually or simultaneously. However, the significance of each contribution to the GPS and CSS population is generally unknown, especially at low luminosity. If frustration is minimal, youth is also likely to be present, but if frustration is dominant, youth is not necessary to explain their compactness. One reason these hypotheses are still debated is that the absorption mechanism responsible for the peaked spectra is still uncertain (Callingham et al. 2015).

1.1 Radio spectra and absorption models

The absorption mechanisms proposed to be responsible for the peaked spectra of GPS and CSS sources and the associated models (see Callingham et al. 2015) are summarized below.

1.1.1 Synchrotron self-absorption

The turnover in the spectra of GPS and CSS sources has generally been attributed to synchrotron self-absorption (SSA), related to their small size (Snellen et al. 2000; Orienti & Dallacasa 2008; Fanti 2009a; Orienti 2016). SSA is a process in which the same population of electrons is responsible for the synchrotron emission and self-absorption. In this model, the turnover occurs at a frequency at which

the source becomes optically thick. Therefore, at higher frequencies, photons are seen from deep within the source and the intrinsic flux density is observed. However, at low frequencies, only emission coming from a thin shell at the surface of the source is visible, and emission from deeper within the source is absorbed, decreasing the total observed flux density. If we assume that the region emitting (and absorbing) the synchrotron photons is homogeneous, we can model the spectrum as

$$S_\nu = a \left(\frac{\nu}{\nu_m} \right)^{-(\beta-1)/2} \left(\frac{1 - e^{-\tau}}{\tau} \right), \quad (1)$$

where a is the normalization parameter of the intrinsic synchrotron spectrum, ν_m is the turnover frequency, β is the power-law index of the electron energy distribution, and τ is the optical depth given by $(\nu/\nu_m)^{-(\beta+4)/2}$. In this model, ν_m is the frequency at which the source becomes optically thick, defined as the point at which the mean free path of electron–photon scattering is approximately the size of the source. This model predicts an optically thick spectral index of 2.5 (Kellermann & Pauliny-Toth 1981), and spectral indices shallower than this are generally attributed to inhomogeneity of the SSA regions, represented by multiple homogeneous SSA components.

1.1.2 Free–free absorption

The other dominant model used to account for the spectra of GPS and CSS sources is free–free absorption (FFA), which results from emission being attenuated by an ionized screen external to the emitting electrons. If a homogeneous screen surrounds the entire region of synchrotron emission, the spectrum is modelled by

$$S_\nu = a\nu^\alpha e^{-\tau_\nu}, \quad (2)$$

where α is the synchrotron spectral index and τ_ν is the free–free optical depth, parametrized by $\tau_\nu = (\nu/\nu_0)^{-2.1}$, with ν_0 being the frequency at which $\tau_\nu = 1$.

Another model, proposed by Bicknell, Dopita & O’Dea (1997), assumes that the screen is inhomogeneous, which is modelled by clouds with a power-law distribution of optical depths parametrized by p , such that the spectrum is given by

$$S_\nu = a(p+1)\gamma [p+1, \tau_\nu] \left(\frac{\nu}{\nu_0} \right)^{2.1(p+1)+\alpha}, \quad (3)$$

where γ is the lower incomplete gamma function of order $p+1$, given by

$$\int_0^{\tau_\nu} e^{-x} x^p dx, \quad (4)$$

and $\tau_\nu = (\nu/\nu_0)^{-2.1}$.

As noted by Fanti (2009a), SSA will always occur to some degree in GPS and CSS sources where synchrotron emission is present. Orienti (2016) suggests that SSA is responsible for the turnover in GPS and CSS sources, but that an additional contribution from FFA is detected in the most compact sources, such as in the cases where the optically thick spectral index is steeper than the SSA limit of 2.5 (Orienti & Dallacasa 2008). It is likely that both SSA and FFA are significant effects in the GPS and CSS population as a whole. However, since previous studies have generally lacked broad coverage of the spectra below the turnover, where the distinction between models is most significant (Callingham et al. 2015), the significance of the contribution of FFA is generally unknown.

It is now much easier to comprehensively study the optically thick spectra in GPS and CSS sources with low-frequency telescopes such

as the Murchison Widefield Array (MWA; Tingay et al. 2013) and the Low-Frequency Array (van Haarlem et al. 2013), and study the optically thin spectra and break features with high-frequency radio telescopes with relatively large bandwidths, such as Australia Telescope Compact Array (ATCA). Using such telescopes to study the spectra of GPS and CSS sources has revealed that the Bicknell et al. (1997) inhomogeneous FFA model is consistent with the radio spectrum and other physical properties of several compact GPS sources (Callingham et al. 2015; Tingay et al. 2015).

1.1.3 Spectral breaks

Another feature of the spectra of GPS and CSS sources is the steepening of the spectral index at high frequencies, referred to as a spectral break. This effect, also known as spectral ageing, is due to synchrotron and inverse-Compton cooling in the jets and lobes, in which higher energy electrons deplete more quickly, since their energy is expended faster.

Kardashev (1962) models the spectral break in a system in which the jets are continually switched on, injecting electrons into a volume with a constant magnetic field. In this model, there is an abrupt change in the spectrum at the break frequency, at which point the synchrotron spectrum steepens from α to $\alpha - 0.5$, where α is the injection spectral index – i.e. the synchrotron spectral index of fresh electrons, which is typically -0.8 , given by $-(\beta - 1)/2$, where β is the electron energy distribution. We refer to this break as a *continuous injection (CI) break*, and parametrize it as a multiplicative term given by

$$\left(\frac{\nu}{\nu_{\text{br}}}\right)^{\alpha - 0.5 + \frac{0.5}{1 + (\nu/\nu_{\text{br}})^c}}, \quad (5)$$

where ν_{br} is the break frequency and c is a constant value determining the sharpness of the break, which we set to 5. For an optically thin spectrum dominated by synchrotron emission, we expect the injection spectral index to be close to $\alpha = -0.8$. Therefore, if no CI break is observed in the data, and the optically thin spectral index is $\alpha \gtrsim -0.8$, a CI break may exist above the range of the data. However, if no CI break is observed in the data, and the optically thin spectral index is $\alpha \gtrsim -1.3$, a CI break may be below or hidden within the turnover (e.g. Callingham et al. 2015). However, if the radio emission is dominated by the hotspot components, where particle acceleration is ongoing, a CI break may not be observable, or the spectral age may be underestimated (Murgia et al. 1999).

Jaffe & Perola (1973) describe an alternative model in which there is a momentary injection of relativistic electrons, causing a smooth exponential drop in flux density in the spectrum, given by $e^{-\nu/\nu_{\text{br}}}$, where ν_{br} is the exponential break frequency. We refer to this break as the *exponential break*.

Based on a source's break frequency, Murgia (2003) derives its spectral age (t_s) based on the electron lifetime, by assuming negligible inverse-Compton losses and an isotropization of the pitch angle following Jaffe & Perola (1973), given by

$$t_s = 5.03 \times 10^4 \cdot B^{-1.5} [(1+z)\nu_{\text{br}}]^{-0.5} \text{ yr}, \quad (6)$$

where B is the strength of the magnetic field in mG and ν_{br} is the break frequency in GHz.

A source whose jet has been continuously injecting electrons and then switches off, ceasing the injection of new electrons, produces a CI break followed by an exponential break (Komisarov & Gubanov 1994). For such a source, the exponential break frequency ($\nu_{\text{br,exp}}$)

relates to the CI break frequency (ν_{br}) via

$$\nu_{\text{br,exp}} = \nu_{\text{br}} \left(\frac{t_s}{t_{\text{off}}}\right)^2, \quad (7)$$

where t_{off} is the *turnoff time*, the time since the jet ceased injecting new electrons (Parma et al. 2007).

1.2 Turnover–linear size relation

The turnover frequency of GPS and CSS sources is observed to vary with the linear size as

$$\log \nu_m = -0.21(\pm 0.04) - 0.59(\pm 0.05) \log l, \quad (8)$$

where l is the projected linear size of the radio source and ν_m is the intrinsic turnover frequency (Orienti & Dallacasa 2014). The small scatter around this linear fit shows that there is a continuous rather than bimodal distribution, which implies that CSS sources are simply larger, older GPS sources. This is consistent with the great deal of overlap that exists between GPS and CSS sources, which are defined arbitrarily by their turnover frequencies. This relation indicates that the mechanism causing the peaked spectra is related to the source dimension.

In the homogeneous SSA model, as the source expands, adiabatic expansion occurs in the mini-lobes that dominate the radio emission, causing their opacity to decrease, producing less SSA and therefore a lower frequency turnover. Therefore, in the SSA model, this relation is well justified and indicates that the turnover frequency and linear size are both related to the age. Homogeneous FFA cannot account for this relation (O'Dea 1998). However, in the Bicknell et al. (1997) FFA model, the electron density within the external inhomogeneous medium decreases with distance from the core, allowing for the relation.

1.3 Low-luminosity GPS and CSS sources

Until recently, our understanding of GPS and CSS sources was limited to very bright Jy-level samples. Even now, their properties at faint levels are generally unknown. Amongst the faintest samples are the AT20G HFP samples (Hancock 2009; Hancock et al. 2009, 2010) and the Australia Telescope Large Area Survey (ATLAS; Norris et al. 2006) CSS sample (Randall et al. 2012), which consist of mJy-level HFPs and sub-mJy CSS sources, respectively. The AT20G samples reach tens to hundreds of mJy and contain high-frequency turnovers that are much more subject to contamination by flat-spectrum quasars. The ATLAS CSS sample is much fainter, reaching sub-mJy levels, with a mean of ~ 1 mJy, but only contains flux density measurements at two frequencies.

Sadler (2016) concluded that there is a large population of less luminous GPS and CSS sources, which have so far eluded detailed study, due to the lack of sensitive large-area surveys at multiple frequencies and the large time requirement for characterizing their morphologies with very long baseline interferometry (VLBI). Tingay & Edwards (2015) observed two such low-luminosity GPS and CSS sources with VLBI and proposed a luminosity–morphology break for compact radio galaxies analogous to the FR I/II break. Kunert-Bajraszewska (2016) also concluded that GPS and CSS sources start to resemble mini-FR I galaxies at low luminosity, which are the missing precursors of their larger scale counterparts. However, very few low-luminosity ($L_{1.4\text{GHz}} < 10^{27} \text{ W Hz}^{-1}$) samples exist, especially those with broad spectral coverage and imaged with VLBI.

Examples of low-luminosity samples include Kunert-Bajraszewska et al. (2010), Orienti & Dallacasa (2014), Sadler (2016), and Kunert-Bajraszewska (2016), which have typical luminosities of 10^{25-26} , 10^{25-30} , 10^{22-26} , and 10^{23-27} W Hz⁻¹, respectively at 1.4, 0.375, 20, and 1.4 GHz. Orienti & Dallacasa (2014) bring together eight samples from the literature that have estimated turnover frequencies and linear sizes, which we use as a comparison. Despite these deep samples, Kunert-Bajraszewska (2016) suggests that significant samples of low-luminosity GPS and CSS sources are yet to be explored in deep radio surveys. Collier et al. (in preparation) present one such sample of 71 GPS and CSS sources with $L_{1.4\text{GHz}} = 10^{21-27}$ W Hz⁻¹ using the deep radio observations of ATLAS, which consists of two of the deepest and most well-studied fields in the sky, as part of the broader project outlined in Collier et al. (2016). Here we present a subset of eight of the bright and compact sources from this sample of 71 that we have imaged with VLBI.

In this paper, we present a study of the radio spectra and high-resolution morphologies of a low-luminosity sample of GPS and CSS sources, using the radio data outlined in Section 2. Our sample has 1.4 GHz flux densities within 3–119 mJy and luminosities $L_{1.4\text{GHz}} = 10^{23.5-26.5}$ W Hz⁻¹. Furthermore, each source has flux density measurements at 6–47 frequencies. Therefore, our sample represents one of the faintest and lowest luminosity samples that contain broad spectral coverage and mas VLBI imaging.

We present the results in Section 3, in which we determine the properties of low-luminosity GPS and CSS sources, including their linear sizes and plausible absorption mechanisms. We use the radio spectra to test whether the spectra of GPS and CSS sources can be represented by FFA or the widely favoured homogeneous SSA model with or without spectral breaks. We use all results to explore whether the properties of faint GPS and CSS sources are consistent with the well-known brighter samples. A discussion of individual sources is presented in Section 4, followed by a summary and conclusion in Section 5. Throughout this paper, we use $\Omega_M = 0.286$, $\Omega_\Lambda = 0.714$, and $H_0 = 69.6$ km s⁻¹ Mpc⁻¹.

2 RADIO DATA

To select the Collier et al. (in preparation) ATCA sample, and our VLBI sample, we started with the 1.4, 1.71, and 2.3 GHz radio observations from ATLAS (Zinn et al. 2012; Franzen et al. 2015), which covers ~ 7 deg² in the Chandra Deep Field-South (CDFs; Rosati et al. 2002) and the European Large Area ISO Survey South 1 (ELAIS-S1; Oliver et al. 2000) down to an rms of ~ 15 $\mu\text{Jy beam}^{-1}$ at 1.4 GHz. The third data release (DR3; Franzen et al. 2015) contains 5118 sources, and spectroscopic redshifts for ~ 30 per cent of the sources from the OzDES Global Reference Catalogue (Yuan et al. 2015; Childress et al. 2017).

The DR3 catalogue consists of a 1.4 GHz flux density and a spectral index, originally derived between two sub-bands at 1.4 and 1.71 GHz. We recover the 1.71 GHz flux density and uncertainty as

$$S_{1.71\text{GHz}} = S_{\nu_{\text{obs}}} x^\alpha, \quad (9)$$

$$\delta S_{1.71\text{GHz}} = \sqrt{(x^\alpha)^2 + (S_{\nu_{\text{obs}}} \ln(x) x^\alpha \delta\alpha)^2}, \quad (10)$$

where $x = 1.71/\nu_{\text{obs}}$ (GHz). Due to its relatively small bandwidth, for some sources, the 1.71 GHz sub-band flux density has a large uncertainty, while the full-band 1.4 GHz flux density has a small uncertainty due to its relatively large bandwidth.

While selecting our samples, we also used deep 150 and 325 MHz Giant Metrewave Radio Telescope (GMRT) observations (Sirothia et al. 2009), 843 MHz Molonglo Observatory Synthesis Telescope (MOST) observations of the ELAIS-S1 field (Randall et al. 2012), and 5.5 GHz ATCA observations of the ECDFS (Huynh et al. 2012, 2015), which covers 0.25 deg² of the CDFS.

From these data, Collier et al. (in preparation) selected the faintest GPS/CSS sample to date and undertook high-resolution observations using the new 4 cm receiver on the ATCA (project ID: C2730), observing 71 sources at 5.5 and 9.0 GHz down to rms levels between tens and hundreds of $\mu\text{Jy beam}^{-1}$, depending on the strength of each source. More details on the observations, reduction, and analysis will be presented in Collier et al. (in preparation).

2.1 Selection criteria

As we were not trying to select a complete sample, we did not apply rigorous selection criteria, but selected a number of interesting GPS and CSS candidates from the ATLAS fields based on the data available at the time, so our selection criteria characterize the sources as a whole:

- (i) has a peaked radio spectrum with $\nu_m \sim 1$ GHz (GPS); or
- (ii) has a steep radio spectrum with $\alpha \lesssim -0.7$ (CSS); and
- (iii) is compact [handled separately for different fields, since the Collier et al. (in preparation) data of the CDFS were not available at the time of selection]:
 - (a) ELAIS-S1 source unresolved in Collier et al. (in preparation) 9 GHz data ($\theta \lesssim 1$ arcsec; $l \lesssim 6$ kpc at $z = 0.5$);
 - (b) ECDFS source unresolved in Huynh et al. (2012) 5.5 GHz data ($\theta \lesssim 2$ arcsec; $l \lesssim 12$ kpc at $z = 0.5$);
 - (c) CDFS source with mas-scale size derived from equation (8).

The first two criteria were based on visual inspection of plots of the radio spectrum, which used all available flux densities, measured from beam-matched images where possible. The third criterion ensured that the sources were sufficiently compact for VLBI observations, so they would yield a high enough signal-to-noise (S/N). We selected the Collier et al. (in preparation) sample in this way, and from this sample, selected eight of the best sources for VLBI that could be observed within the time that we were allocated, selected in the same way and also using the data from Collier et al. (in preparation), with five in the ELAIS-S1 and three in the CDFS. Collier et al. (in preparation) later observed all CDFS sources with ATCA at 5.5 and 9.0 GHz, except for the one source from the ECDFS (CI0020), which had already been observed at these frequencies by Huynh et al. (2012).

2.2 VLBI observations

We observed our sample with the Australian Long Baseline Array (LBA; project ID: V506) over two days, starting with the ELAIS-S1 sources on 2013 November 21 (V506a), and the CDFS sources on 2014 February 21 (V506b). For V506a, the array consisted of the CSIRO telescopes of the Australian Square Kilometre Array Pathfinder (ASKAP; Johnston et al. 2007; DeBoer et al. 2009), ATCA, and Parkes, in addition to the University of Tasmania telescopes of Hobart and Ceduna (At-Ak-Pa-Ho-Cd). For V506b, the CSIRO telescope Mopra (Mp) was added to the array. This gave resolutions as high as ~ 15 mas. In both cases, observations were made at a central frequency of 1.634 GHz with a 64 MHz bandwidth at each of the two circular polarizations (left and right): L

and R) and were obtained over 10 h periods. The observations were structured to cycle between the targets and nearby calibrators, with scan lengths of 90 s.

2.3 Data reduction

2.3.1 Calibration

The LBA data for all eight sources were correlated at Curtin University using the DiFX software correlator (Deller et al. 2007, 2011) with 128 channels across the 64 MHz band and 2 s integration times. Only parallel hand polarizations were correlated (RR and LL). The typical (u, v) coverage achieved on the first and second days is shown in Fig. 1. The visibility data were imported into AIPS for standard processing, as briefly described below.

The visibility data were calibrated in amplitude using measured system temperatures for each telescope from the time of observation, as well as known gains for each telescope. The resulting amplitudes for the calibrators (which were unresolved) were then

compared to flux densities measured from the ATCA. Adjustments to the telescope gains were made, with a subsequent refinement of the calibrated amplitudes. We estimate that the flux density scale is accurate to within ~ 10 per cent uncertainty.

The visibilities for the calibrator sources were then fringe-fitted to solve for delays and phases for each antenna, interpolated to the times of the target observations, and applied to the target visibilities. This standard phase referencing step calibrates the visibility phases for the target sources, allowing imaging to proceed.

2.3.2 Imaging and source extraction

The target visibility data were exported from AIPS into DIFMAP for further analysis. Two sources yielded no detections in the (u, v) plane, and were not imaged. For the remaining six, because of the relatively sparse nature of the measurements (see Fig. 1), a model-fitting approach was adopted, using the task MODELFIT in DIFMAP. For each target source, a model for the source structure was generated using the smallest number of Gaussian components required to fit the visibilities. The models were iteratively fitted to the data and used for self-calibration (when the sources were detected with high enough S/N). Four sources (CI0020, s895, s415, and s150) were imaged with a pixel size of ~ 3 mas, while the other two (CI0008 and CI0112) were imaged with a pixel size of ~ 6 mas.

2.4 Ancillary radio data

In addition to the data from which our sample was selected, we made use of newer GMRT observations of the ELAIS-S1 field at 150 (Intema et al. 2017) and 610 MHz (Intema et al., in preparation), and of the CDFS field at 150 MHz (PI: Shankar). We also made use of the large ensemble of deep radio data available in the CDFS field, including MOST observations at 408 and 843 MHz (PI: Hunstead; Crawford et al., in preparation), ATCA observations at 5.5, 9, 18, and 20 GHz from the AT20G pilot survey and follow-up programme (Franzen et al. 2014), and ATCA 34 GHz observations of a strip within the ECDFS (project ID C2317; PI: Beelen).

2.4.1 ASKAP

We also used ASKAP observations of ~ 19 deg² of the CDFS that was made at 844 MHz using the Boolardy Engineering Test Array (BETA; Hotan et al. 2014; McConnell et al. 2016). BETA was a prototype of ASKAP that used six of the 36 dishes, each equipped with the first generation (Mark I) of phased array feeds. To image the CDFS using BETA, the ASKAP Commissioning and Early Science team followed a similar reduction process to Heywood et al. (2016), and achieved an rms of ~ 640 μ Jy beam⁻¹ and a resolution of 91 arcsec \times 56 arcsec.

2.4.2 GLEAM

Lastly, we used MWA data from the Galactic and Extragalactic All-sky MWA (GLEAM; Wayth et al. 2015) extragalactic catalogue of the sky south of $\delta = 30^\circ$ (Hurley-Walker et al. 2017). The GLEAM catalogue is based on sources detected at 200 MHz within a deep image covering 170–231 MHz. Sources detected in this image were used as a priori information by the AEGEAN source finder (Hancock et al. 2012), via its prioritized fitting feature,² to extract 20 sub-band

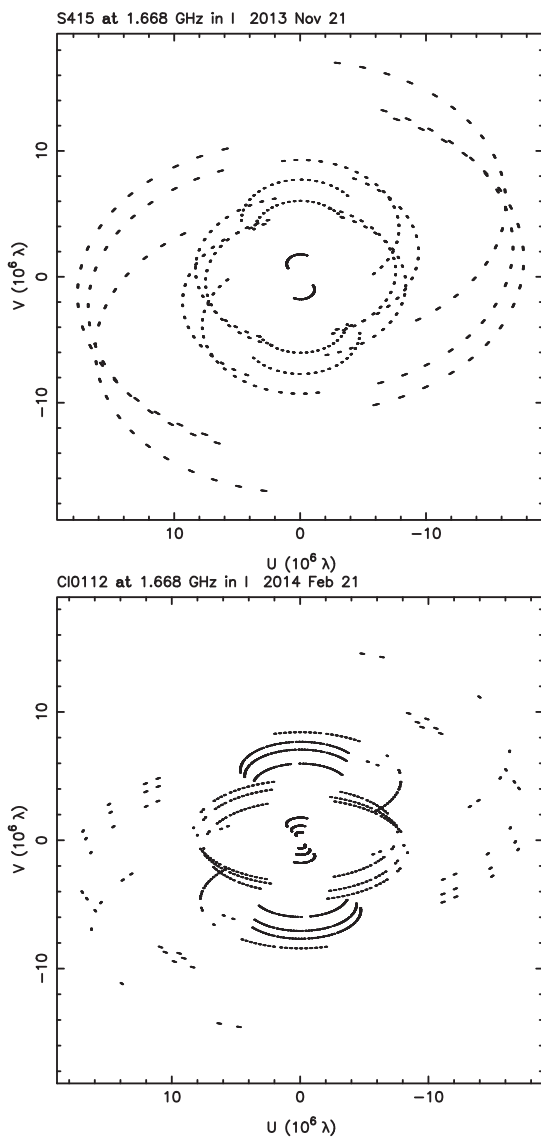


Figure 1. The typical (u, v) coverage achieved during the first (top) and second (bottom) days of our LBA observations.

² <https://github.com/PaulHancock/Aegean/wiki/Priorized-Fitting>

flux densities, each of which had 7.68 MHz bandwidths. Therefore, all sources contain measurements at all 20 sub-bands, although many are very low in S/N.

Since most of the sources we selected were faint, we averaged together three sets of four of the 7.68 MHz GLEAM sub-bands between 72–103, 103–134, and 139–170 MHz. We derived the average flux densities as

$$\frac{\sum S_\nu}{N} \pm \frac{1}{\sqrt{N}} \sqrt{\sum (\delta S_\nu^2)}, \quad (11)$$

where δS_ν is the uncertainty on the flux density S_ν at frequency ν and N is the number of 7.68 MHz channels that we averaged together, which was four. In combination with the deep 170–231 MHz measurement, this resulted in four GLEAM flux density measurements, which we used for three faint sources detected in the deep image (CI0020, s895, and s415). If the uncertainty was larger than the flux density, we discarded the measurement.

2.4.3 Source extraction

We used PYBDSM (Mohan & Rafferty 2015) to perform source extraction for some of the ancillary radio data. PYBDSM calculates the background rms and mean maps, identifies islands of emission, fits multiple Gaussians to each island, derives the residuals, and groups Gaussians into sources. It then performs further source extraction on lower resolution images, generated by processing the residual images with an *à trous* wavelet transformation, at the end of which a Gaussian catalogue and a source catalogue are written. Since we were interested in the total sum of flux densities over all components, we grouped all Gaussians belonging to an island into one source, and used an island threshold of 2.0, allowing PYBDSM to flood-fill adjacent pixels down to 2σ . Additionally, we used an adaptive rms box, which allowed for higher rms values due to artefacts close to strong sources.

Source extraction was performed on the images from GMRT at 150, 325, and 610 MHz, MOST at 408 and 843 MHz, ASKAP at 844 MHz, and ATCA at 34 GHz. We also performed source extraction on the ATLAS 2.3 GHz images for a few sources that had been omitted from the Zinn et al. (2012) catalogue. In the ELAIS-S1 field, PYBDSM had already been used to perform source extraction on the 610 MHz mosaic (Intema et al., in preparation).

3 RESULTS

The final models fitted to the sources detected with the LBA are listed in Table 1, and the upper limits for the undetected sources are listed in Table 2. The corresponding images are shown in Fig. 2.

Large LBA–ATCA flux density ratios exist amongst the two most resolved sources, CI0008 and CI0020, as shown in Table 1. Given the sparse (u , ν) coverage (see Fig. 1), particularly on the short baselines, these large ratios are most likely due to poorly constrained model component amplitudes. However, the VLBI observations are not used in the spectral models, but are used primarily to measure their linear sizes, which are not affected by this issue. The particular lack of short baselines on the first day may account for the two non-detections, which may have been resolved out.

3.1 Linear sizes

For single-component sources, the largest linear size (LLS) was derived from the major axis of the fitted model. Source CI0008

Table 1. The GPS and CSS candidates detected with the LBA. Shown are the ID, the fitted RA, Dec., 1.67 GHz flux density, rms, S/N, major axis, minor axis and PA from the LBA image, the 1.71 GHz ATCA flux density derived (see Section 2) from ATLAS DR3 (Franzen et al. 2015), the LBA–ATCA flux density ratio, the redshift and its reference, the largest linear size (LLS), and the 1.4 GHz luminosity (Franzen et al. 2015). All values are given to two significant figures. Source CI0008 was fitted with two components, which are listed separately. The LBA–ATCA flux density ratio listed for this source represents the sum of the flux density of both components as a fraction of the 1.71 GHz ATCA flux density. The LLS of this source corresponds to the distance between these components, measured from equation (12). The LLS for all other sources is derived from the major axis of the FWHM. Sources with ID prefix ‘s’ are from the ELAIS-S1 field, following the source IDs from Middelberg et al. (2008). Sources with ID prefix ‘C’ are from the CDFS field, following an earlier version of the ATLAS DR3 catalogue. References for the redshifts are listed as the following: (1) photo- z from Rowan-Robinson et al. (2008); (2) Mao et al. (2012); (3) Coil et al. (2011); (4) Mainieri et al. (2008).

ID	RA (J2000)	Dec. (J2000)	S_{LBA}^a (mJy)	rms (mJy beam $^{-1}$)	S/N	$\Theta_{\text{maj}} \times \Theta_{\text{min}}$ (mas \times mas)	PA (deg)	S_{ATCA} (mJy)	$\frac{S_{\text{LBA}}^a}{S_{\text{ATCA}}}$	z	Ref.	LLS (kpc)	$L_{1.4\text{GHz}}$ (W Hz $^{-1}$)
s150	00:33:12.1954	−44:19:51.4418	30	0.19	150	29×0.0	−86	17 ± 1.0	1.7				
s895	00:37:45.2726	−43:25:54.2412	6.5	0.088	74	33×18	−59	6.4 ± 0.85	1.0	1.1	(1)	0.28	5.9×10^{25}
s415	00:38:07.9339	−43:58:55.3721	2.0	0.086	23	47×14	53	6.0 ± 0.88	0.33	0.51	(2)	0.29	7.3×10^{24}
CI0008-1	03:35:53.3319	−27:27:40.2979	100	0.18	580	130×74	−84	99 ± 1.8	2.4	0.26	(2)	1.8	2.4×10^{25}
CI0008-2	03:35:53.3486	−27:27:40.3363	130	0.18	720	150×99	71	99 ± 1.8	2.4	0.26	(2)	1.8	2.4×10^{25}
CI0112	03:30:09.3647	−28:18:50.4100	1.9	0.083	22	17×0.0	38	2.3 ± 0.91	0.82	0.29	(3)	0.073	6.9×10^{23}
CI0020	03:33:10.1976	−27:48:42.2056	48	0.10	460	110×75	−75	21 ± 1.0	2.3	1.0	(4)	0.92	1.3×10^{26}

^aSee Section 3 for a discussion about the uncertainty on the VLBI flux densities.

Table 2. The GPS and CSS candidates not detected with the LBA. Shown are the ID, RA, Dec., and 1.4 GHz ATCA flux density from ATLAS DR1 (Middelberg et al. 2008), the rms and 1.67 GHz flux density upper limit from the LBA, the redshift, and the 1.4 GHz luminosity. All values are given to two significant figures. Both sources are from the ELAIS-S1 field, and use the source IDs and 1.4 GHz flux densities from DR1, since one source is outside the field catalogued in DR3 by Franzen et al. (2015). We quote a 6.75σ flux density upper limit following the approach from Deller & Middelberg (2014). Both redshifts are photometric redshifts from Rowan-Robinson et al. (2008).

ID	RA (J2000)	Dec.	S_{ATCA} (mJy)	S_{LBA} (mJy beam $^{-1}$)	rms (mJy beam $^{-1}$)	z	Ref.	$L_{1.4\text{GHz}}$ (W Hz $^{-1}$)
s798	00:39:07.934	-43:32:05.833	7.8 ± 0.05	< 0.55	0.081	0.40	(1)	4.5×10^{24}
s1218	00:35:08.380	-43:00:04.202	33 ± 0.11	< 1.3	0.19	0.63	(1)	5.7×10^{25}

was resolved into two components, so we derived the LLS from the maximum angular separation between the components, given by

$$\Theta + \theta_{\text{gauss1}} + \theta_{\text{gauss2}} - \theta_{\text{psf}}, \quad (12)$$

where Θ was the separation between the Gaussians derived from their RA and Dec., and θ_{gauss1} , θ_{gauss2} , and θ_{psf} were respectively the radii of the first and second Gaussians and the synthesized beam at the position angle (PA) subtended between the two Gaussians (PA_{sky}), defined as

$$\theta = \sqrt{(a \cos(\text{PA}_{\text{sky}} - \text{PA}_{\text{gauss}}))^2 + (b \sin(\text{PA}_{\text{sky}} - \text{PA}_{\text{gauss}}))^2}, \quad (13)$$

where a , b , and PA_{gauss} were respectively the full width at half-maximum (FWHM) of the major and minor axes, and the PA of the Gaussian, either the PYBDSM Gaussian or the synthesized beam. θ_{psf} was simply taken as the major axis of the FWHM, since $\text{PA}_{\text{gauss}} - \text{PA}_{\text{sky}} < 1^\circ$.

3.2 Variability

For sources CI0008, CI0020, s895, and s415, we used overlapping or very close frequency measurements from different epochs separated by a number of years, enabling us to constrain their variability. These included GMRT/MWA measurements at ~ 150 MHz and MOST/ASKAP measurements at ~ 843 MHz, all of which agreed within the uncertainties.

For source CI00020, we also used the Franzen et al. (2014) follow-up observations of the AT20G pilot survey at 5.5 and 9 GHz, both of which agreed within the uncertainties with the nearby measurements. Using the 18 and 20 GHz observations separated by more than 3 yr, Franzen et al. (2014) estimated a 2.6 per cent variability index for source CI0020, concluding that it was non-variable.

Following Franzen et al. (2014), we test for variability using a χ^2 -test, where the value is given by

$$\chi^2 = \frac{(S_1 - S_2)^2}{\sigma_1^2 + \sigma_2^2}, \quad (14)$$

where S_1 , S_2 , σ_1 , and σ_2 are the flux density and uncertainty of the nearby or overlapping frequencies ν_1 and ν_2 . As in Franzen et al. (2014), we classify sources as non-variable when the null hypothesis that S_1 and S_2 are the same is supported with a probability of 1 per cent or greater, given by $\chi^2 < 6.63$. Table 3 shows the χ^2 values we calculate for all overlapping or nearby frequencies, from which we conclude that these four sources are not variable.

Since our radio spectra span such a large range of frequencies over a large range of epochs, we expect that variable sources will not maintain a typical GPS or CSS spectrum over these epochs. This appears to be the case with source CI0112, which gave a flat spectrum based on the simultaneous 5.5 and 9.0 GHz measurements, and which may be affected by variability. However, for source s150, we cannot rule out a low level of variability that does not significantly affect the spectral shape.

3.3 Modelling the radio spectra

Since CI0008 was strongly detected at low frequency, we used the 20 GLEAM sub-bands in the modelling. For all other sources, we used the GLEAM deep flux density from 200 MHz, as well as the three averaged flux density measurements (see Section 2.4.2). We used all other flux density measurements that were available, up to 34 GHz. Since each source was selected to be unresolved at 5.5/9 GHz (i.e. $\lesssim 2$ arcsec) and since they were detected at the

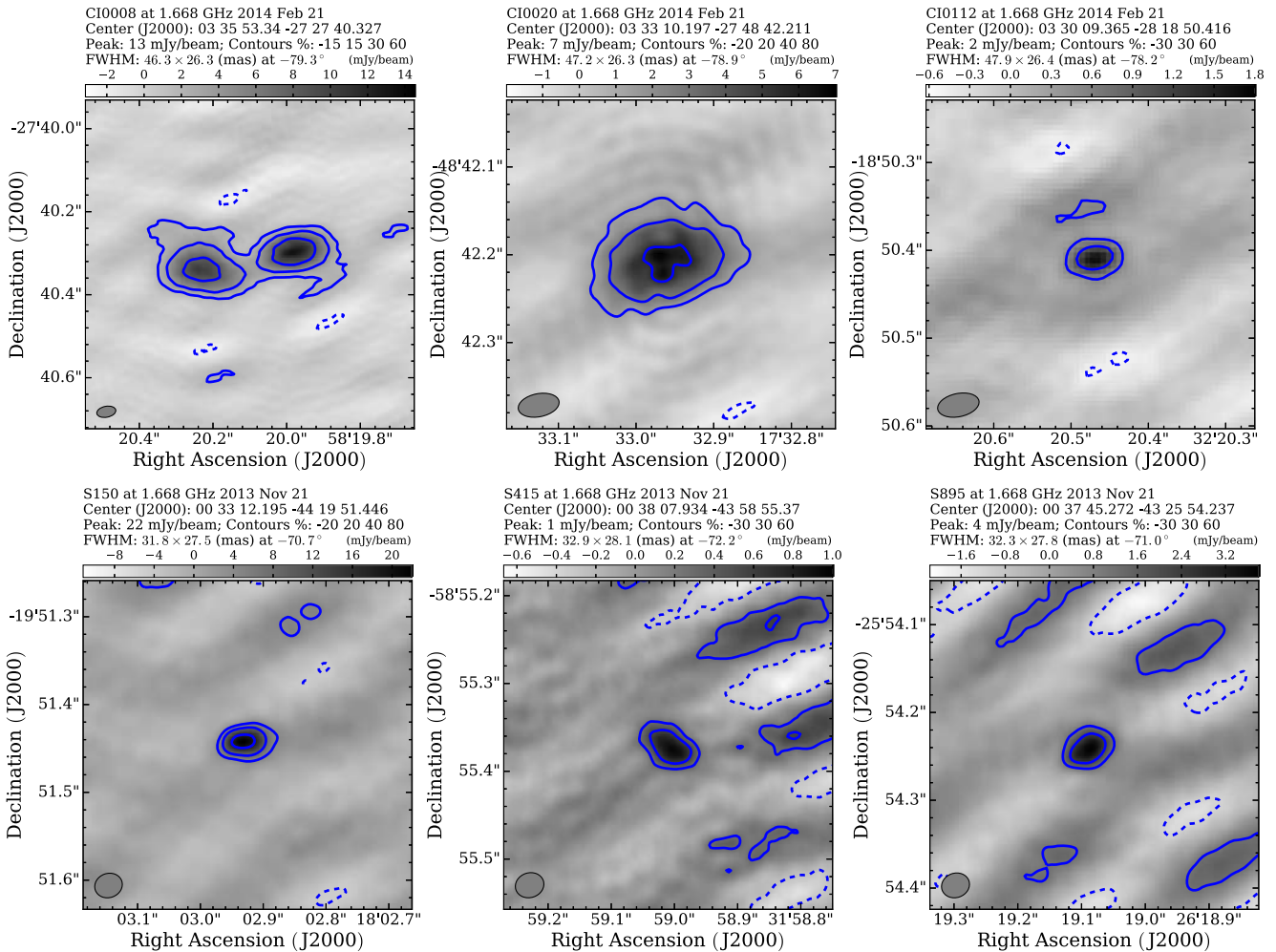


Figure 2. The LBA images of the six detected GPS and CSS candidates. The contours represent the displayed percentages of the image peak, including a negative dashed contour. The synthesized beam is shown by the shaded ellipse in the bottom-left corner, and its size is displayed above the map.

Table 3. The χ^2 values calculated from equation (14) using flux densities from overlapping or nearby frequencies ν_1 and ν_2 .

Source	ν_1 (MHz)	ν_2 (MHz)	χ^2
CI0008	153	151	0.81
CI0008	843	844	0.02
CI0020	153	155	0.11
CI0020	843	844	0.74
CI0020	9000	9253	0.00
s415	153	155	0.04
s895	153	155	0.82

mas scales of the LBA observations, we did not expect any of the short-baseline flux density measurements to suffer from resolution effects. Therefore, we used all available flux density measurements. However, we discarded all measurements where the flux density uncertainty was larger than the flux density, which was the case for a few of the GLEAM deep band measurements. Where a source was undetected at low frequency, we used an upper limit on the flux density of 2σ . We emphasize that only six such upper limits or averaged measurements are used from GLEAM, for sources CI0020, s150, s895, and s415, which do not significantly constrain

the turnover or the general shape of the spectra, and therefore have little effect on our analysis and conclusions.

The models we fitted to the radio spectra of each source used the same procedure as in Tingay et al. (2015), which used a non-linear least-squares fitting routine that applied the Levenberg–Marquardt algorithm. The fitting routine produces a covariance matrix, from which we took the square root of the diagonal terms as uncertainties, representing the 1σ confidence interval.

3.3.1 Spectral models

Here we use the Bicknell et al. (1997) FFA model³ given by equation (3) and the homogeneous SSA model given by equation (1) to test whether the spectra of low-luminosity GPS and CSS sources can be represented using FFA or the widely favoured homogeneous SSA model with or without spectral breaks. The models fitted to our sources are shown in Fig. 3 and summarized in Tables 4 and 5. Only one FFA model requires a spectral break, while all but one of the alternative SSA and power-law models do require a spectral break.

To evaluate the models, we use the Bayesian information criterion (BIC), calculated from the likelihood function (\mathcal{L}), the number of

³ From this point onwards, we simply refer to this model as ‘FFA’.

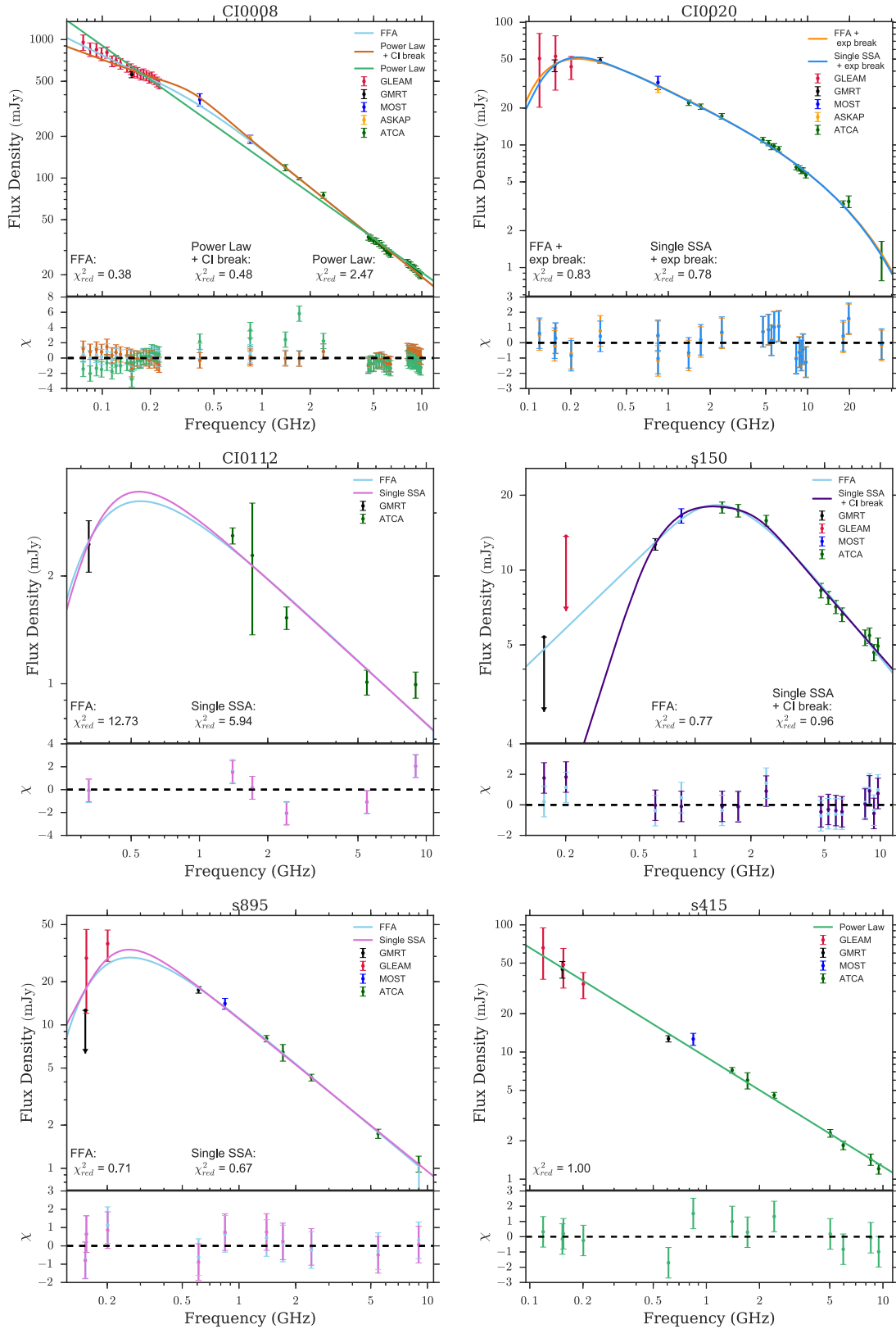


Figure 3. The models fitted to the radio spectrum for all sources, listed in Tables 4 and 5. Upper limits at 2σ are shown by the downward arrows. A power-law is fitted to CI0008 for reference. We interpret CI0112 as a variable quasar. Its 1.71 GHz flux density uncertainty is large due to the way it was derived (see Section 2).

Table 4. Radio spectrum SSA and power-law model parameters fitted to our sources. Listed are the fitted model, the synchrotron normalization parameter a , the electron energy distribution β , the spectral index α , the frequency ν_0 found during the fitting [i.e. the parameter from equation (1) – see Section 1.1.1], the break frequency ν_{br} , the turnover frequency ν_m , the flux density at the spectral peak S_{ν_m} , the reduced χ^2 value, the degrees of freedom (DOF), and the difference in BIC values defined as $BIC_{model1} - BIC_{model2}$, where model 1 is from Table 5 and model 2 is from this table. The values are given to two significant figures, and the uncertainties are the 1σ errors, given to the same number of decimal places as the value. The individual models are shown in Fig. 3.

Source	Model	a (mJy)	β	α	ν_0 (MHz)	ν_{br} (GHz)	ν_m (MHz)	S_{ν_m} (mJy)	χ^2_{red}	DOF	ΔBIC
C10008	Power-law with CI break	410 ± 14		-0.43 ± 0.01		0.36 ± 0.02	<76	>810	0.48	43	-0.94
C10020	SSA with exp. break	74 ± 3	2.0 ± 0.1		160 ± 13	26 ± 4	220	52	0.76	18	3.3
C10112	SSA	5.0 ± 0.9	2.2 ± 0.2		400 ± 77		540	3.4	5.9	2	2.7
s415	Power-law	3500 ± 560		-0.86 ± 0.02			<120	>57	1.0	10	
s150	SSA with CI break	20 ± 1	1.3 ± 0.1		730 ± 40	2.2 ± 0.4	1300	18	0.96	10	-1.9
s895	SSA	50 ± 4	3.1 ± 0.1		230 ± 15		260	33	0.67	6	1.8

Table 5. Radio spectrum FFA parameters fitted to our sources. Listed are the fitted model, the synchrotron normalization parameter a , the spectral index α , the optical depth parameter p , the frequency ν_0 found during the fitting [i.e. the parameters from the Bicknell et al. (1997) model – see equation (3) and Section 1.1.2], the break frequency ν_{br} , the turnover frequency ν_m , the flux density at the spectral peak S_{ν_m} , the reduced χ^2 value, and the degrees of freedom (DOF). The values are given to two significant figures, and the uncertainties are the 1σ errors, given to the same number of decimal places as the value. Where the uncertainty is greater than the fitted value, we list ‘-’. The individual models are shown in Fig. 3.

Source	Model	a (mJy)	α	p	ν_0 (MHz)	ν_{br} (GHz)	ν_m (MHz)	S_{ν_m} (mJy)	χ^2_{red}	DOF
C10008	FFA	380 ± 51	-0.93 ± 0.01	-0.83 ± 0.02	400 ± 62		<76	>900	0.38	42
C10020	FFA with exp. break	-	-0.54 ± 0.03	-	-	28 ± 5	220	50	0.83	17
C10112	FFA	-	-0.59 ± 0.20	-	-		550	3.2	13	1
s150	FFA	27 ± 2	-0.95 ± 0.05	-0.21 ± 0.08	1500 ± 190		1300	18	0.77	10
s895	FFA	-	-1.1 ± 0.0	-	-		270	30	0.71	5

free parameters (p) in the given model (f), and the number of data points (N), each with a flux density (S_{ν_i}) and uncertainty (σ_i) at frequency ν , given by

$$\text{BIC} = -2 \ln \mathcal{L} + p \ln N, \quad (15)$$

where

$$\mathcal{L} = \prod_{i=1}^N \frac{1}{\sigma_i \sqrt{2\pi}} \exp\left(-\frac{1}{2\sigma_i^2} (S_{\nu_i} - f(\nu_i))^2\right). \quad (16)$$

When comparing two models for the same source, a $\Delta\text{BIC} = \text{BIC}_{\text{model1}} - \text{BIC}_{\text{model2}} > 2$ is interpreted as positive evidence in favour of model 2, a $\Delta\text{BIC} > 6$ as strong evidence, and a $\Delta\text{BIC} > 10$ as very strong evidence, where the model with the lowest BIC is preferred (Kass & Raftery 1995).

The models were chosen based on the following decision process, each of which gave a smaller reduced χ^2 value and a lower BIC value. If no curvature was seen within the spectrum, a power-law was fitted, otherwise both FFA and SSA were fitted. If the high-frequency spectra departed from a power-law, we additionally fit a spectral break. A CI or exponential break was chosen based on a combination of visual inspection of the radio spectra and the lowest reduced χ^2 and BIC values.

Source s415 did not show any curvature, so a power-law was fitted. Sources CI0020, s895, and s150 showed clear curvature and were fitted with both SSA and FFA models.

Source CI0020 gave ΔBIC values that indicated very strong evidence in favour of models that included an exponential break compared to those that did not. The FFA model including an exponential break gave $\Delta\text{BIC} = 26.3$ compared to the FFA model without a break and $\Delta\text{BIC} = 13.5$ compared to the FFA model with a CI break, while the SSA model including an exponential break gave $\Delta\text{BIC} = 45.2$ compared to the SSA model and $\Delta\text{BIC} = 17.5$ compared to the SSA model with a CI break.

In the case of s150, SSA could only be reasonably fitted with a CI break included, which gave $\text{BIC}_{\text{SSA}} - \text{BIC}_{\text{SSA} + \text{CIbreak}} = 10.9$, and only $\Delta\text{BIC} = 1.0$ in the case of an exponential break. However, the location of the break frequency is strongly affected by the sampling of the spectrum, which has large gaps between measurements. For the FFA model, including a CI break gave a slightly improved χ^2 value, but was not preferred according to the BIC values.

Source CI0008 showed a feature at low frequency that was either a spectral break or a very small amount of curvature, possibly close to a turnover. The spectrum was poorly fitted by a power-law, but gave a $\Delta\text{BIC} = 85.6$ in favour of a power-law with a CI break, which we fitted to the spectrum. SSA could not account for a small amount of curvature, and therefore, we also fit an FFA model, which does not constrain a turnover, but rather a possible absorption feature caused by low-density clouds.

Based on the flat spectrum given by the simultaneous 5.5 and 9.0 GHz measurements of source CI0112, we suggest that it is a variable quasar (see Section 4), which is consistent with its highly compact VLBI emission, meaning the multi-epoch spectra we have measured do not represent its intrinsic spectrum. We fit FFA and SSA models to its spectrum, but discard it in the following analysis.

3.4 Turnover–linear size relation

Here we compare the turnovers and linear sizes of our sample to those from Orienti & Dallacasa (2014), who brought together eight samples from the literature to compile a sample of young radio sources spanning a large range of linear sizes.

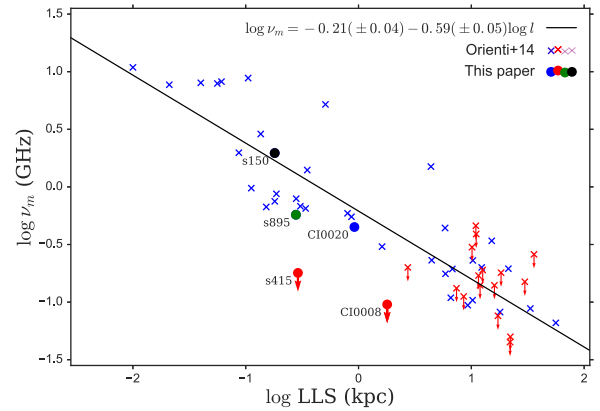


Figure 4. The turnover–linear size relation for our sample (circles) compared to the sample from Orienti & Dallacasa (2014, crosses). All turnover frequencies are shown in the rest frame, taken from the models in Table 5 where more than one model was fitted. Sources with upper limits on the turnover frequency are shown in red and with downward arrows. The source in green (s895) has a photometric redshift, and the source in black (s150) uses an estimated redshift of $z = 0.5$. The solid line is given by equation (8).

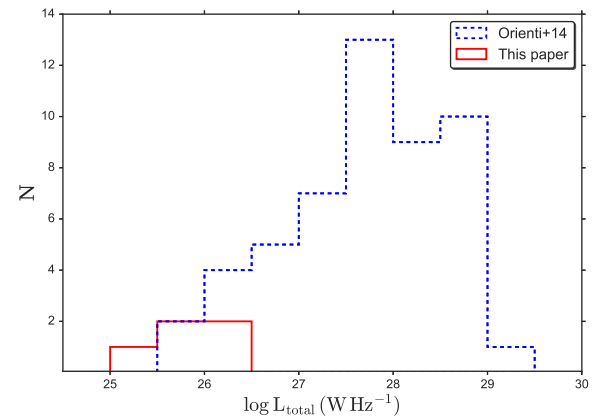


Figure 5. The distribution of 375 MHz total luminosities of our sample (solid red bars – derived by extrapolating from the optically thin spectral index) compared to the sample from Orienti & Dallacasa (2014, dashed blue bars), where s150 uses an estimated redshift of $z = 0.5$.

Fig. 4 shows the turnover–linear size relation (see Section 1.2) for the sources with redshifts, using upper limits for sources that do not turn over within our data range. Fig. 5 shows the distribution of total luminosities, where the 375 MHz luminosities of our sources were derived by extrapolating from the optically thin spectral index. This figure shows that our VLBI sources are less luminous in general than those from Orienti & Dallacasa (2014), which represent the typical luminosities of the known GPS and CSS population. These figures show that low-luminosity GPS and CSS sources also follow the turnover–linear size relation. CI0008 and s415 may be considered outliers, in somewhat of a unique phase space, which may suggest that they turn over at $\lesssim 100$ MHz, or that the turnover frequency and linear size of low-luminosity CSS sources do not correlate in the same way as for brighter samples.

Furthermore, the total luminosity as a function of the LLS (see Fig. 6) shows that our sources are very under-represented amongst existing samples of GPS and CSS sources, being low-luminosity sources in the late CSO or early MSO stage.

An & Baan (2012) found that the kinematic ages of their sample of CSOs followed the trend $l \propto t_{\text{kin}}^{3/2}$ yr, which we can express as

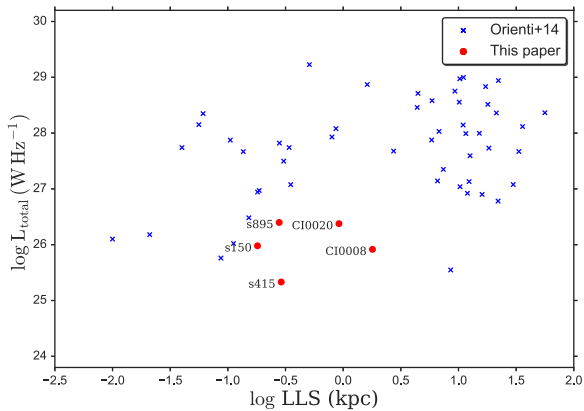


Figure 6. The total 375 MHz luminosities as a function of the LLS for our sample (red circles) compared to the sample from Orienti & Dallacasa (2014, blue crosses), where the 375 MHz luminosities of our sources were derived by extrapolating from the optically thin spectral index, and s150 uses an estimated redshift of $z = 0.5$.

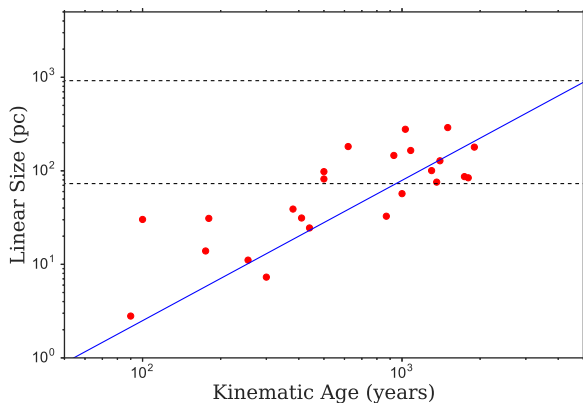


Figure 7. The fit to the CSOs from An & Baan (2012), given by equation (17), and shown by the solid blue line. We use this to derive statistical model ages for the CSOs in our sample, which range in LLS from 73 to 920 pc, as shown by the dashed black lines.

$l = c \cdot t_{\text{kin}}^{3/2}$ yr, where l is the linear size and t_{kin} is the kinematic age in the source rest frame, derived from the hotspot angular separation velocity $\mu = \theta/t_{\text{kin}}(1+z)$, where θ is the angular size, which we take as the fitted major axis from the VLBI image.

Performing a least-squares fitting routine using the kinematic ages and linear sizes from An & Baan (2012) gives $c = 0.0025 \pm 0.0004$, where the uncertainty is the 1σ error taken from the diagonal of the covariance matrix, as summarized in Section 3.3. Therefore, assuming that our low-luminosity sources scale in the same way, we derive statistical *model ages* for the CSOs in our sample, given by

$$l = (0.0025 \pm 0.0004)t_{\text{model}}^{3/2}, \quad (17)$$

as shown by the fit in Fig. 7.

If our CSOs are significantly frustrated, the model ages will be significantly underestimated, since the jets will have been expanding at a lower rate for much longer. We may expect a similar effect if the jets are low in power or recurrent. Therefore, if frustration or recurrence plays a significant role, we can expect the model ages to be lower than the true age of the source.

4 DISCUSSION OF INDIVIDUAL SOURCES

4.1 CI0008

CI0008 is resolved into two components with VLBI and has the appearance of a classic double, with two mini-lobes spanning ~ 450 mas. The two components yield a hotspot emission ratio of 1.24, suggesting a slight asymmetry. At a redshift of 0.256, it has an LLS of 1.8 kpc, classifying it as an MSO, and a radio luminosity of $L_{1.4\text{GHz}} = 2.4 \times 10^{25} \text{ W Hz}^{-1}$.

Its morphology is consistent with that of a small-scale edge-brightened FR II, and less consistent with a small-scale FR I, in which we would expect to detect a central core. This is consistent with predictions that the precursors of FR I galaxies are less luminous than $10^{25} \text{ W Hz}^{-1}$ (Tingay & Edwards 2015; Sadler 2016).

CI0008 has an intrinsic turnover frequency of < 100 MHz, classifying it as a CSS source.

As shown in Fig. 3, a power-law across the entire spectrum produces a poor fit, since the spectrum deviates from a power-law amongst the GLEAM measurements at < 250 MHz. This feature could indicate a spectral break or a small amount of curvature, possibly related to the turnover. If this feature is the tail end of the turnover, homogeneous SSA cannot account for it, since the curvature shown by the data would be too small. The low-frequency data are reasonably fitted by a power-law with a CI break at ~ 360 MHz, but with increasingly worse residuals between the model and the GLEAM measurements towards lower frequency, and a very shallow injection spectral index of $\alpha_{\text{inj}} = -0.43$. If this feature is a spectral break and not part of a turnover, CI0008 must have an intrinsic turnover at much lower frequencies than 95 MHz, making it even more of an outlier on the turnover–linear size diagram than it already is in Fig. 4.

The FFA model produces a good fit, with a reduced χ^2 value of 0.38, and a ΔBIC value of -0.94 , giving no evidence in favour of either the FFA model or the power-law model with a CI break. The FFA model predicts a well-constrained value of $p = -0.83 \pm 0.02$. This p -value implies that amongst the absorbing clouds, many more with low emission measure exist compared to those with high emission measure, accounting for a small amount of curvature.

Using the revised formula from Beck & Krause (2005), an angular separation of 450 mas, and an injection spectral index from the SSA model of $\alpha_{\text{inj}} = -0.43$, we derive an equipartition magnetic field strength of $B_{\text{eq}} \sim 4$ mG. Assuming this magnetic field strength, and $\nu_{\text{br}} = 360$ MHz, equation (6) gives a spectral age of ~ 9.3 kyr. Comparatively, the FFA model with $\alpha_{\text{inj}} = -0.93$ predicts $B_{\text{eq}} \sim 3\text{mG}$, and assuming that a break exists at $\nu_{\text{br}} > 10$ GHz, this gives a spectral age of ~ 2.7 kyr.

A small amount of curvature may suggest that CI0008 has an extremely broad turnover, covering a FWHM of tens of decades of frequency, compared to typical spectral widths of ~ 1.2 decades for GPS sources (O’Dea, Baum & Stanghellini 1991), where the superposition of the radio spectrum of many absorbing components would cause a broadening of the turnover. If this curvature is an absorption feature that is not part of the turnover, another population of much more dense absorbing clouds may exist at much lower frequency, causing a second bump in the spectrum, such as those seen in Clemens et al. (2010).

4.2 CI0020

CI0020 is resolved with VLBI and at a redshift of 1.03, has an LLS of 0.92 kpc, which is the size of a large CSO. It is fitted with an

intrinsic turnover frequency of ~ 440 MHz, classifying it as a CSS source. Both the SSA and FFA models produce a good fit, with reduced χ^2 values of 0.76 and 0.83, respectively. A ΔBIC value of 3.3 gives marginal positive evidence in favour of the SSA model, since it has one fewer fitted parameter.

CI0020 is well modelled by the Jaffe & Perola (1973) model of an exponential spectral break, with very strong positive evidence in favour of the FFA and SSA models that include this break. This suggests that electron injection has ceased in the region dominating the radio spectrum. No CI break is observed within the spectrum, and since its optically thin spectrum is so flat, we do not expect a CI break near the turnover. This suggests that CI0020 has ceased injection, or that it is dominated by emission in regions where the electrons have aged, such as the lobes, as opposed to where fresh electrons are injected, such as the jets and hotspots.

Using an upper limit on the angular separation given by $\Theta_{\text{maj}} = 110$ mas, and an injection spectral index from the SSA model of $\alpha_{\text{inj}} = -0.50$, we derive an equipartition magnetic field strength of $B_{\text{eq}} \sim 8$ mG. Using this magnetic field strength and the exponential break frequency predicted by the SSA model of $\nu_{\text{br}} = 26$ GHz, we derive $t_{\text{off}} \sim 0.3$ kyr, which is independent of the CI break frequency. Comparatively, the FFA model with $\alpha_{\text{inj}} = -0.54$ predicts $B_{\text{eq}} \sim 10$ mG and $t_{\text{off}} \sim 0.2$ kyr.

Assuming that the jets of CI0020 scale in the same way as those from An & Baan (2012), we derive $t_{\text{model}} = 5.1^{+0.6}_{-0.5}$ kyr from equation (17). From this, we derive a hotspot angular separation velocity of $\mu = 11 \pm 1 \mu\text{s yr}^{-1}$.

4.3 CI0112

CI0112 is resolved along one axis with VLBI and, at a redshift of 0.287, has an LLS of 73 pc. It has a very low luminosity of $L_{1.4\text{GHz}} = 6.9 \times 10^{23} \text{ W Hz}^{-1}$. Its spectrum shows evidence of variability and is very poorly fitted even by the best-fitting SSA model, with a reduced χ^2 value of 5.9. The 5.5 and 9.0 GHz data were taken simultaneously and give a flat spectrum. Therefore, we suggest that this source is a flat-spectrum quasar, which may have undergone a flaring event during which it temporarily adopted a convex spectrum and was measured by ATLAS. This interpretation is consistent with its very compact size, typical of a quasar. The slight extension along one axis of the VLBI detection may suggest a core-jet morphology. If CI0112 were a GPS source, it would turn over in the GHz range according to equation (8).

4.4 s150

s150 is resolved along one axis with VLBI, which gives a largest angular size of 29 mas. It is fitted with an observed turnover of ~ 1300 MHz, classifying it as a GPS source. It is very faint, with a flux density at the spectral peak of 18 mJy, and has a steep spectral index of $\alpha = -0.95 \pm 0.05$. Both the SSA and FFA models produce a good fit, with reduced χ^2 values of 0.96 and 0.77, respectively. A ΔBIC value of -1.9 gives marginal positive evidence in favour of FFA. The FFA model predicts a value of $p = -0.21 \pm 0.08$, implying somewhat of a dense environment.

Using an upper limit on the angular separation given by $\Theta_{\text{maj}} = 29$ mas, an injection spectral index from the SSA model of $\alpha_{\text{inj}} = -0.95$, and an estimated redshift of $z = 0.5$, we derive an equipartition magnetic field strength of $B_{\text{eq}} \sim 12$ mG. Using this magnetic field strength and assuming the CI break of 2.2 GHz from the SSA model, we derive $t_s \sim 0.7$ kyr. Comparatively, the FFA

model with $\alpha_{\text{inj}} = -0.95$ predicts $B_{\text{eq}} \sim 10$ mG, and assuming a CI break at ~ 10 GHz, this gives $t_s \sim 0.4$ kyr.

Assuming a redshift of $z = 0.5$, s150 has a luminosity of $L_{1.4\text{GHz}} = 1.8 \times 10^{25} \text{ W Hz}^{-1}$. Assuming that s150 follows the same $l - t_{\text{kin}}$ trend as the CSOs from An & Baan (2012) and has a redshift of $z = 0.5$, we derive $t_{\text{model}} = 1.7 \pm 0.2$ kyr and $\mu = 11 \pm 1 \mu\text{s yr}^{-1}$.

4.5 s415

s415 is resolved with VLBI and appears to be composed of two components, suggesting a symmetric double morphology. At a redshift of 0.5066, it has an LLS of 0.29 kpc, which is the size of a typical CSO. The power-law produces a reasonable fit, with a reduced χ^2 value of 1.00. It is fitted with an intrinsic turnover frequency of $\lesssim 180$ MHz, classifying it as a CSS source. It is faint in the radio, with a flux density at the spectral peak of > 57 mJy, and has a typical CSS spectral index of $\alpha = -0.86 \pm 0.02$. It has a relatively low luminosity of $L_{1.4\text{GHz}} = 7.3 \times 10^{24} \text{ W Hz}^{-1}$.

Using an upper limit on the angular separation given by $\Theta_{\text{maj}} = 47$ mas and an injection spectral index of $\alpha_{\text{inj}} = -0.86$, we derive an equipartition magnetic field strength of $B_{\text{eq}} \sim 7$ mG. Using this magnetic field strength and assuming a CI break of > 10 GHz, we derive $t_s \sim 0.7$ kyr.

Assuming that s415 follows the same $l - t_{\text{kin}}$ trend as the CSOs from An & Baan (2012), we derive $t_{\text{model}} = 2.4^{+0.3}_{-0.2}$ kyr and $\mu = 13 \pm 1 \mu\text{s yr}^{-1}$. This suggests that the magnetic field strength is $B > 3$ mG, which gives $t_s < 2.5$ kyr.

4.6 s895

s895 is resolved with VLBI and, assuming that its photometric redshift of 1.14 is correct, has an LLS of 0.28 kpc, which is the size of a typical CSO. It is fitted with an intrinsic turnover frequency of ~ 550 MHz, classifying it as a CSS source. It is faint in the radio, with a flux density at the spectral peak of 29 mJy, and has a steep spectral index of $\alpha = -1.1 \pm 0.0$. However, being at high redshift, it is the second most luminous source in the sample, with $L_{1.4\text{GHz}} = 5.9 \times 10^{25} \text{ W Hz}^{-1}$. Both the SSA and FFA models produce reasonable fits, with reduced χ^2 values of 0.67 and 0.71, respectively. A ΔBIC value of 1.8 gives no evidence in favour of either model.

Using an upper limit on the angular separation given by $\Theta_{\text{maj}} = 33$ mas and an injection spectral index of $\alpha_{\text{inj}} = -1.1$, we derive an equipartition magnetic field strength of $B_{\text{eq}} \sim 7$ mG.

A CI break may exist at low frequency, giving an injection spectral index of $\alpha_{\text{inj}} = -0.60$. Therefore, assuming a CI break of < 610 MHz and a magnetic field strength of 7 mG, we derive $t_s > 1.9$ kyr for both SSA and FFA.

Assuming that s895 follows the same $l - t_{\text{kin}}$ trend as the CSOs from An & Baan (2012), we derive $t_{\text{model}} = 2.3^{+0.3}_{-0.2}$ kyr and $\mu = 7 \pm 1 \mu\text{s yr}^{-1}$. This implies that the magnetic field strength is $B < 7$ mG, which gives $t_s > 2.4$ kyr.

5 SUMMARY AND CONCLUSION

We observed eight GPS and CSS candidates with the LBA and detected six of them, all of which were resolved, and one of which has the morphology of a classic double, like that of a small-scale FR II galaxy, consistent with the prediction that FR I precursors are less luminous than $10^{25} \text{ W Hz}^{-1}$ (Tingay & Edwards 2015;

Sadler 2016). Their redshifts range from $0.256 < z < 1.14$, giving $L_{1.4\text{GHz}} = 10^{23-26} \text{ W Hz}^{-1}$ and $0.07 < \text{LLS} < 1.8 \text{ kpc}$. Our observations confirm that s150 is a GPS source turning over at $\sim 1.3 \text{ GHz}$, CI0112 may be a variable flat-spectrum quasar, while the other sources are CSS sources turning over between ~ 76 and $\sim 260 \text{ MHz}$. Our sources are lower in luminosity compared to typical GPS and CSS sources, with $L_{1.4\text{GHz}} < 10^{27} \text{ W Hz}^{-1}$, and follow the turnover–linear size relation, showing that low-luminosity GPS and CSS sources also co-evolve in size and turnover.

We derive statistical model ages for CI0020, s150, s895, and s415, based on the An & Baan (2012) scaling relation of $l \propto t_{\text{kin}}^{3/2}$, in the range $1.7 < t_{\text{model}} < 5.1 \text{ kyr}$. Based on equipartition magnetic field strengths in the range of $4 < B_{\text{eq}} < 12 \text{ mG}$, we derive spectral ages in the range $0.7 < t_s < 2.7 \text{ kyr}$, and 9.3 kyr for the broken power-law model for CI0008. We find that CI0020 is well modelled by the Jaffe & Perola (1973) model of an exponential spectral break, with a turnoff time of $t_{\text{off}} \sim 0.3 \text{ kyr}$, suggesting that the region dominating the radio spectrum has ceased injecting new electrons. The estimated ages of our sources are similar to those of brighter samples, suggesting that low-luminosity GPS and CSS sources are young and evolving.

The GPS and CSS sources are well fitted by the homogeneous SSA model, as well as the Bicknell et al. (1997) inhomogeneous FFA model. A ΔBIC of 3.3 and -1.9 gives marginal positive evidence in favour of an SSA model for source CI0020, and an FFA model for source s150, respectively, but no evidence in favour of an FFA or SSA model in all other cases. All but one of the FFA models do not require a spectral break to account for the radio spectrum, while all but one of the alternative SSA and power-law models do require a spectral break to account for the radio spectrum.

CI0008 deviates from a power-law at low frequency, which cannot be accounted for by a small amount of curvature from SSA, suggesting that either FFA or electron ageing is producing this feature, which may be the beginning of the optically thick region of a very broad, very shallow turnover or a low-frequency spectral break.

We conclude that our faint and low-luminosity population of GPS and CSS sources are similar to brighter samples in terms of their spectral shape, turnover frequencies, linear sizes, and ages. However, we could not test for a morphological difference except for CI0008, which appears as a scaled-down FR II, consistent with predictions (Tingay & Edwards 2015; Sadler 2016).

For this particular class of AGN, the Evolutionary Map of the Universe (EMU; Norris et al. 2011) and other ASKAP, MWA, and MeerKAT surveys will revolutionize our understanding. MWA observations will enable the turnovers and optically thick spectra to be thoroughly measured, enabling the different spectral models to be tested over large samples. Early science for ASKAP will give continuous radio coverage from ~ 700 – 1800 MHz , enabling GPS and CSS samples to be selected from within one set of observations. EMU will detect several million GPS and CSS sources, and uncover the low-luminosity population. Studying these samples of AGN will enable their evolution to be characterized across a vast range of cosmic time and evolutionary ages.

ACKNOWLEDGEMENTS

We would like to thank Bjorn Emonts and Alexandre Beelen for permission to use the 34 GHz ATCA observations of the ECDFS, and the referee for their helpful comments that improved this paper.

The Australia Telescope Compact Array and Long Baseline Array are part of the Australia Telescope National Facility, which

is funded by the Australian Government for operation as a National Facility managed by CSIRO.

The Australian SKA Pathfinder is part of the Australia Telescope National Facility, which is managed by CSIRO. Operation of ASKAP is funded by the Australian Government with support from the National Collaborative Research Infrastructure Strategy. ASKAP uses the resources of the Pawsey Supercomputing Centre. This scientific work makes use of the Murchison Radio-astronomy Observatory, operated by CSIRO. Support for the operation of the MWA is provided by the Australian Government (NCRIS), under a contract to Curtin University administered by Astronomy Australia Limited. Establishment of ASKAP, the Murchison Radio-astronomy Observatory, and the Pawsey Supercomputing Centre are initiatives of the Australian Government, with support from the Government of Western Australia and the Science and Industry Endowment Fund. We acknowledge the Wajarri Yamatji people as the traditional owners of the Observatory site.

This work made use of the Swinburne University of Technology software correlator, developed as part of the Australian Major National Research Facilities Programme.

We thank the staff of the GMRT who have made these observations possible. GMRT is run by the National Centre for Radio Astrophysics of the Tata Institute of Fundamental Research.

The MOST is operated by the University of Sydney with support from the Australian Research Council and the Science Foundation for Physics within the University of Sydney.

Part of this work has been conducted with the financial support from the Australian Research Council Centre of Excellence for All-sky Astrophysics (CAASTRO), through project number CE110001020.

This research has made use of the VizieR catalogue access tool, CDS, Strasbourg, France. TOPCAT (Taylor 2005), SAOIMAGE DS9, NASA’s Astrophysics Data System bibliographic services, and ASTROPY, a community-developed core PYTHON package for Astronomy (Astropy Collaboration et al. 2013), were also used in this study. This research made use of APLpy, an open-source plotting package for Python (Robitaille & Bressert 2012).

REFERENCES

- Alexander P., 2000, *MNRAS*, 319, 8
 An T., Baan W. A., 2012, *ApJ*, 760, 77
 Astropy Collaboration et al., 2013, *A&A*, 558, A33
 Baum S. A., O’Dea C. P., Murphy D. W., de Bruyn A. G., 1990, *A&A*, 232, 19
 Beck R., Krause M., 2005, *Astron. Nachr.*, 326, 414
 Bicknell G. V., Dopita M. A., O’Dea C. P. O., 1997, *ApJ*, 485, 112
 Callingham J. R. et al., 2015, *ApJ*, 809, 168
 Childress M. J. et al., 2017, *MNRAS*, 472, 273
 Clemens M. S., Scaife A., Vega O., Bressan A., 2010, *MNRAS*, 405, 887
 Coil A. L. et al., 2011, *ApJ*, 741, 8
 Collier J. D., Norris R. P., Filipović M. D., Tothill N. F. H., 2016, *Astron. Nachr.*, 337, 36
 Dallacasa D., Stanghellini C., Centonza M., Fanti R., 2000, *A&A*, 363, 887
 de Vries W. H., Barthel P. D., O’Dea C. P., 1997, *A&A*, 321, 105
 DeBoer D. R. et al., 2009, *Proc. IEEE*, 97, 1507
 Deller A. T., Middelberg E., 2014, *AJ*, 147, 14
 Deller A. T., Tingay S. J., Bailes M., West C., 2007, *PASP*, 119, 318
 Deller A. T. et al., 2011, *PASP*, 123, 275
 Fanaroff B. L., Riley J. M., 1974, *MNRAS*, 167, 31p
 Fanti C., 2009a, *Astron. Nachr.*, 330, 120
 Fanti R., 2009b, *Astron. Nachr.*, 330, 303
 Fanti C., Fanti R., Dallacasa D., Schilizzi R. T., Spencer R. E., Stanghellini C., 1995, *A&A*, 302, 317

- Fanti C. et al., 2000, *A&A*, 358, 499
- Franzen T. M. O. et al., 2014, *MNRAS*, 439, 1212
- Franzen T. M. O. et al., 2015, *MNRAS*, 453, 4020
- Gelderman R., Whittle M., 1994, *ApJS*, 91, 491
- Giroletti M., Polatidis A., 2009, *Astron. Nachr.*, 330, 193
- Hancock P. J., 2009, *Astron. Nachr.*, 330, 180
- Hancock P. J., Tingay S. J., Sadler E. M., Phillips C., Deller A. T., 2009, *MNRAS*, 397, 2030
- Hancock P. J., Sadler E. M., Mahony E. K., Ricci R., 2010, *MNRAS*, 408, 1187
- Hancock P. J., Murphy T., Gaensler B. M., Hopkins A., Curran J. R., 2012, *MNRAS*, 422, 1812
- Heywood I. et al., 2016, *MNRAS*, 457, 4160
- Hotan A. W. et al., 2014, *PASA*, 31, e041
- Hurley-Walker N. et al., 2017, *MNRAS*, 464, 1146
- Huynh M. T., Hopkins A. M., Lenc E., Mao M. Y., Middelberg E., Norris R. P., Randall K. E., 2012, *MNRAS*, 426, 2342
- Huynh M. T., Bell M. E., Hopkins A. M., Norris R. P., Seymour N., 2015, *MNRAS*, 454, 952
- Intema H. T., Jagannathan P., Mooley K. P., Frail D. A., 2017, *A&A*, 598, A78
- Jaffe W. J., Perola G. C., 1973, *A&A*, 26, 423
- Johnston S. et al., 2007, *PASA*, 24, 174
- Kardashev N. S., 1962, *SvA*, 6, 317
- Kass R. E., Raftery A. E., 1995, *J. Am. Stat. Assoc.*, 90, 773
- Kellermann K. I., Pauliny-Toth I. I. K., 1981, *ARA&A*, 19, 373
- Komissarov S. S., Gubanov A. G., 1994, *A&A*, 285, 27
- Kunert-Bajraszewska M., 2016, *Astron. Nachr.*, 337, 27
- Kunert-Bajraszewska M., Gawroński M. P., Labiano A., Siemiginowska A., 2010, *MNRAS*, 408, 2261
- McConnell D. et al., 2016, *PASA*, 33, e042
- Mainieri V. et al., 2008, *ApJS*, 179, 95
- Mao M. Y. et al., 2012, *MNRAS*, 426, 3334
- Marr J. M., Perry T. M., Read J., Taylor G. B., Morris A. O., 2014, *ApJ*, 780, 178
- Middelberg E. et al., 2008, *AJ*, 135, 1276
- Mohan N., Rafferty D., 2015, *Astrophysics Source Code Library*, record ascl:1502.007
- Murgia M., 2003, *PASA*, 20, 19
- Murgia M., Fanti C., Fanti R., Gregorini L., Klein U., Mack K.-H., Vigotti M., 1999, *A&A*, 345, 769
- Norris R. P. et al., 2006, *AJ*, 132, 2409
- Norris R. P. et al., 2011, *PASA*, 28, 215
- O’Dea C. P., 1998, *PASP*, 110, 493
- O’Dea C. P., Baum S. A., 1997, *AJ*, 113, 148
- O’Dea C. P., Baum S. A., Stanghellini C., 1991, *ApJ*, 380, 66
- Oliver S. et al., 2000, *MNRAS*, 316, 749
- Orienti M., 2016, *Astron. Nachr.*, 337, 9
- Orienti M., Dallacasa D., 2008, *A&A*, 487, 885
- Orienti M., Dallacasa D., 2014, *MNRAS*, 438, 463
- Orienti M., Murgia M., Dallacasa D., 2010, *MNRAS*, 402, 1892
- Parma P., Murgia M., de Ruiter H. R., Fanti R., Mack K.-H., Govoni F., 2007, *A&A*, 470, 875
- Polatidis A. G., 2009, *Astron. Nachr.*, 330, 149
- Polatidis A. G., Conway J. E., 2003, *PASA*, 20, 69
- Randall K. E., Hopkins A. M., Norris R. P., Edwards P. G., 2011, *MNRAS*, 416, 1135
- Randall K. E., Hopkins A. M., Norris R. P., Zinn P.-C., Middelberg E., Mao M. Y., Sharp R. G., 2012, *MNRAS*, 421, 1644
- Readhead A. C. S., Taylor G. B., Pearson T. J., Wilkinson P. N., 1996, *ApJ*, 460, 634
- Robitaille T., Bressert E., 2012, *Astrophysics Source Code Library*, record ascl:1208.017
- Rosati P. et al., 2002, *ApJ*, 566, 667
- Rowan-Robinson M. et al., 2008, *MNRAS*, 386, 697
- Sadler E. M., 2016, *Astron. Nachr.*, 337, 105
- Shulevski A., Morganti R., Oosterloo T., Struve C., 2012, *A&A*, 545, A91
- Siemiginowska A., Cheung C. C., LaMassa S., Burke D. J., Aldcroft T. L., Bechtold J., Elvis M., Worrall D. M., 2005, *ApJ*, 632, 110
- Sirothia S. K., Dennefeld M., Saikia D. J., Dole H., Riquebourg F., Roland J., 2009, *MNRAS*, 395, 269
- Snellen I. A. G., Schilizzi R. T., Miley G. K., de Bruyn A. G., Bremer M. N., Röttgering H. J. A., 2000, *MNRAS*, 319, 445
- Stanghellini C., 2003, *PASA*, 20, 118
- Taylor M. B., 2005, in Shopbell P., Britton M., Ebert R., eds, *ASP Conf. Ser. Vol. 347, Astronomical Data Analysis Software and Systems XIV*. Astron. Soc. Pac., San Francisco, p. 29
- Tingay S. J., Edwards P. G., 2015, *MNRAS*, 448, 252
- Tingay S. J. et al., 2013, *PASA*, 30, e007
- Tingay S. J. et al., 2015, *AJ*, 149, 74
- Tinti S., de Zotti G., 2006, *A&A*, 445, 889
- van Breugel W., Miley G., Heckman T., 1984, *AJ*, 89, 5
- van Haarlem M. P. et al., 2013, *A&A*, 556, A2
- Wayth R. B. et al., 2015, *PASA*, 32, e025
- Yuan F. et al., 2015, *MNRAS*, 452, 3047
- Zinn P.-C., Middelberg E., Norris R. P., Hales C. A., Mao M. Y., Randall K. E., 2012, *A&A*, 544, A38

¹CSIRO Astronomy and Space Science (CASS), Marsfield, NSW 2122, Australia

²Western Sydney University, Locked Bag 1797, Penrith, NSW 2751, Australia

³International Centre for Radio Astronomy Research (ICRAR), Curtin University, Bentley, WA 6102, Australia

⁴ARC Centre of Excellence for All-Sky Astrophysics (CAASTRO), Australia

⁵Sydney Institute for Astronomy (SIfA), School of Physics, The University of Sydney, NSW 2006, Australia

⁶CSIRO Astronomy and Space Science (CASS), 26 Dick Perry Avenue, Kensington, WA 6151, Australia

⁷International Centre for Radio Astronomy Research (ICRAR), M468, University of Western Australia, Crawley, WA 6009, Australia

⁸National Radio Astronomy Observatory (NRAO), 1003 Lopezville Road, Socorro, NM 87801-0387, USA

⁹Leiden Observatory, Leiden University, Niels Bohrweg 2, NL-2333 CA Leiden, the Netherlands

¹⁰Square Kilometre Array South Africa, 3rd Floor, The Park, Park Road, Pinelands, Cape Town 7405, South Africa

¹¹Department of Physics and Electronics, Rhodes University, PO Box 94, Grahamstown 6140, South Africa

¹²University of Technology Sydney, 15 Broadway, Ultimo, NSW 2007, Australia

¹³Dunlap Institute for Astronomy and Astrophysics, University of Toronto, 50 St. George St, ON M5S 3H4, Canada

¹⁴School of Chemical and Physical Sciences, Victoria University of Wellington, PO Box 600, Wellington 6140, New Zealand

¹⁵Centre for Astrophysics Research, School of Physics, Astronomy and Mathematics, University of Hertfordshire, College Lane, Hatfield AL10 9AB, UK

¹⁶Peripety Scientific Ltd, PO Box 11355 Manners Street, Wellington 6142, New Zealand

¹⁷School of Physics, The University of Melbourne, Parkville, VIC 3010, Australia

¹⁸Astrophysics, Department of Physics, University of Oxford, Keble Road, Oxford OX1 3RH, UK

This paper has been typeset from a $\text{\TeX}/\text{\LaTeX}$ file prepared by the author.