

Climate change vulnerability and resilience of Pacific island water services

Jeremy Kohlitz

Joanne Chong

Juliet Willetts

Institute for Sustainable Futures – University of Technology Sydney

Vanuatu



UTS

Institute for
Sustainable
Futures

WASH
FUTURES



Water, Sanitation & Hygiene Conference 2018

Collaboration for Universal WASH

#WASHFutures18

Climate change impacts

- Water insecurity
- Infectious diseases
- Rising inequality
- Undermine human rights
- Undermine SDGs
- Reverse coverage of improved infrastructure



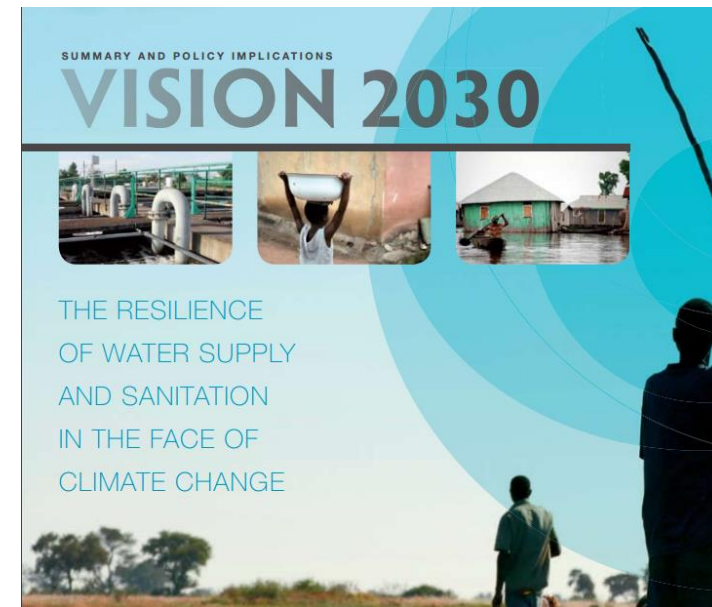
What is WASH resilience?



<

Climate Resilient Water Sanitation and Hygiene services

DESCRIPTION PROGRAMME RESOURCES CONCLUSION >



Research in Vanuatu

- Two case study sites
- Interviews with community members
- Infrastructure risk assessments
- Water catchment assessment
- Participant observations





RISK/HAZARD

- Exposed source
- Deteriorating infrastructure

Different framings of the problem



CONTEXTUAL VULNERABILITY

- Unequal levels of service
- Women are underrepresented in decision-making



SOCIAL-ECOLOGICAL RESILIENCE

- Single water resource & system
- Management not adaptive



Key points

- Be aware of and engage with different perspectives



Key points

- Be aware of and engage with different perspectives
- Responding to climate change is also about flexibility, not just resistance



Key points

- Be aware of and engage with different perspectives
- Respond to climate change is also about flexibility, not just resistance
- Climate risk management and general development must be integrated and harmonised



Key points

- Be aware of and engage with different perspectives
- Respond to climate change is also about flexibility, not just resistance
- Climate risk management and general development must be integrated and harmonised
- Capacity to adapt to climate change is differentially held within communities



Pacific solutions

- A single catch-all approach to PICs is inappropriate. Not all PICs...
 - Are small (PNG is 460,840 km², many PIC islands are mountainous)
 - Remote (Remote in relation to what?)
 - Have poor access to water infrastructure (Most PICs have >90% improved water access)
 - Have civil instability (Many PICs have enjoyed decades of peace)
- PICs further differ substantially in terms of...
 - Geography
 - Water availability
 - Government capacity
 - GDP per capita
 - Culture



Pacific solutions

- Some PICs (PNG, Solomons, Kiribati) may focus on first-time access
 - Others (Cook Islands, Tonga, Palau) may focus on climate risks/sustainability



Pacific solutions

- Some PICs (PNG, Solomons, Kiribati) may focus on first-time access
 - Others (Cook Islands, Tonga, Palau) may focus on climate risks/sustainability
- Some PICs (Tuvalu, RMI, Nauru) have critically fragile water resources
 - Others (Vanuatu, Fiji) have substantial, but difficult to access, water resources



Pacific solutions

- Some PICs (PNG, Solomons, Kiribati) may focus on first-time access
 - Others (Cook Islands, Tonga, Palau) may focus on climate risks/sustainability
- Some PICs (Tuvalu, RMI, Nauru) have critically fragile water resources
 - Others (Vanuatu, Fiji) have substantial, but difficult to access, water resources
- Low-lying atoll islands face severe consequences from sea-level rise



Summary of key points

- WASH resilience includes a wide range of ideas and perspectives
 - Biophysical, Social, and Social-ecological
- WASH resilience is not just about resistance
 - Need to balance flexibility and resistance
- WASH resilience integrates climate risk management with traditional development objectives
- WASH resilience is not equally spread across and within communities
 - Need to identify whom is most affected by climate change
- Climate change should be a part of SDG6 discussions in the PIC region
- Addressing climate change in PICs is island-specific



Thank you

Jeremy Kohlitz

Jeremy.Kohlitz@uts.edu.au