



# F Plasmid Lineages in *Escherichia coli* ST95: Implications for Host Range, Antibiotic Resistance, and Zoonoses

Max Laurence Cummins,<sup>a,b</sup> Cameron J. Reid,<sup>a,b</sup> Steven Philip Djordjevic<sup>a,b</sup>

<sup>a</sup>The iThree Institute, University of Technology Sydney, Ultimo, NSW, Australia

<sup>b</sup>Australian Centre for Genomic Epidemiological Microbiology, University of Technology Sydney, Ultimo, NSW, Australia

**ABSTRACT** *Escherichia coli* sequence type 95 (ST95) is an extraintestinal pathogenic *E. coli* (ExPEC) renowned for its ability to cause significant morbidity and mortality in humans and poultry. A core genome analysis of 668 ST95 isolates generated 10 clades (A to J), 5 of which are reported here for the first time. F plasmid replicon sequence typing showed that almost a third (178/668 [27%]) of the collection carry pUTI89 (F29:B10) and were restricted to clade A and a sublineage of clade B. In contrast, almost half (328/668 [49%]) of the collection across multiple clades harbor ColV plasmids (multiple F types). Strikingly, ST95 lineages with pUTI89 were almost exclusively from humans, while ColV<sup>+</sup> ST95 lineages were sourced from poultry and humans. Clade I was notable because it comprises temporally and geographically matched ColV<sup>+</sup> isolates sourced from human and retail poultry meat, suggesting interspecies transmission via food. Clade F contained ST95 isolates of bovine origin, none of which carried ColV or pUTI89 plasmids. Remarkably, an analysis of a cohort of 34,176 *E. coli* isolates comprising 2,570 sequence types mirrored what was observed in ST95: (i) pUTI89 was overwhelmingly linked to *E. coli* sourced from humans but almost entirely absent from 13,027 *E. coli* isolates recovered from poultry, pigs, and cattle, and (ii) *E. coli* isolates harboring ColV plasmids were from multiple sources, including humans, poultry, and swine. Overall, our data suggest that F plasmids influence *E. coli* host range, clade structure, and zoonotic potential in ST95 and ExPEC more broadly.

**IMPORTANCE** *E. coli* ST95 is one of five dominant ExPEC lineages globally and noted for causing urinary tract and bloodstream infections and neonatal meningitis in humans and colibacillosis in poultry. Using high-resolution phylogenomics, we show that F replicon sequence type is linked to ST95 clade structure and zoonotic potential. Specifically, human centric ST95 clades overwhelmingly harbor F29:B10 (pUTI89) plasmids, while clades carrying both human- and poultry-sourced isolates are typically ColV<sup>+</sup> with multiple replicon types. Importantly, several clades identified clonal ColV<sup>+</sup> ST95 isolates from human and poultry sources, but clade I, which housed temporally and spatially matched isolates, provided the most robust evidence. Notably, patterns of association of F replicon types with *E. coli* host were mirrored within a diverse collection of 34,176 *E. coli* genomes. Our studies indicate that the role of food animals as a source of human ExPEC disease is complex and warrants further investigation.

**KEYWORDS** ST131, ST73, ST95, *E. coli*, APEC, antibiotic resistance, antimicrobial resistance, ColV, *Escherichia coli*, ExPEC, plasmid, pUTI89

*Escherichia coli* is one of the most frequently isolated Gram-negative pathogens globally. Broadly speaking, members of the species can be divided into two primary pathotypes named according to the anatomical sites they infect: intestinal pathogenic *E. coli* (IPEC) and extraintestinal pathogenic *E. coli* (ExPEC). ExPEC colonizes the

**Editor** Suleyman Yildirim, Istanbul Medipol University School of Medicine

**Copyright** © 2022 Cummins et al. This is an open-access article distributed under the terms of the [Creative Commons Attribution 4.0 International license](https://creativecommons.org/licenses/by/4.0/).

Address correspondence to Steven Philip Djordjevic, Steven.Djordjevic@uts.edu.au.

The authors declare no conflict of interest.

**Received** 5 October 2021

**Accepted** 22 December 2021

**Published** 25 January 2022

mammalian gut and typically does not cause gastrointestinal disease but can cause disease at extraintestinal sites when afforded the opportunity. In humans, ExPEC causes urinary tract infections (UTIs), blood infections (bacteremia and sepsis), soft tissue infections, neonatal meningitis (1–4), and ventilator-associated pneumonia (5). These pathologies are responsible for billions of dollars in health care expenditure each year and cause significant morbidity and mortality (6).

Despite this, the understanding of how ExPEC emerge, adapt, and spread is poor. Many sequence types (STs) of *E. coli* are known to cause extraintestinal infection; however, relatively few including ST131, ST69, ST95, ST73, ST10, ST405, and ST38, are responsible for the majority of the ExPEC disease burden (7). Much attention has been given to ExPEC lineages that circulate within hospital environments, such as the global pandemic extended-spectrum  $\beta$ -lactamase (ESBL)-producing and fluoroquinolone-resistant (FQR) ST131 *fimH30*-Rx lineage. However, UTIs are predominantly community-onset diseases, suggesting that reservoirs of ExPEC that adversely impact human health reside outside health care settings. Apart from the human gastrointestinal tract, companion and food animals, sewage, and retail meats have all been implicated (8). *E. coli* isolates that are genetically closely related to isolates from human ExPEC infections have also been recovered from synanthropic birds, wild animals, and natural environments (9–13). In commercial poultry production, a subset of ExPEC known as avian-pathogenic *E. coli* (APEC) cause colibacillosis, a disease that imposes a major economic cost to the poultry industry. Several notable APEC sequence types, such as ST95 and ST117, also cause human extraintestinal diseases (14, 15). Furthermore, foodborne extraintestinal diseases affecting humans have been touted for many years (16). For example, unlike the pandemic clade C lineages of ST131 that carry an H30 *fimH* allele, ST131 H22 (clade B) are known to harbor ColV F virulence plasmids (11, 17). A high-resolution phylogenomic study of ST131-H22 from retail poultry meat products and contemporaneous human clinical ST131-H22 isolates in the United States colocalize to the same phylogenetic clade (11), highlighting human-poultry interspecies transmission. However, while evidence exists for and against the hypothesis, the topic remains controversial (18–23).

Unraveling links between human and nonhuman reservoirs of ExPEC is complicated by many factors. Some of these include inherent sampling bias, including overrepresentation of clinical and antimicrobial-resistant (AMR) isolates in public databases. Other issues pertain to nuances of ExPEC phylogenomics and pathobiology, including the delay between colonization of the host gut and disease onset and the genomic diversity and plasticity observed within and between major ExPEC lineages (24). Several key studies that have sought to address spillover between human and animal *E. coli* reservoirs are limited by sampling based on the selection of isolates that are resistant to critically important antimicrobials (CIAs) (21, 25, 26). Notwithstanding the importance of identifying pathogens resistant to CIAs, viewing microbial communities through an AMR-centric lens potentially obfuscates the timely identification of emerging pathogens and limits understanding of mobile genetic elements (MGEs) that spread virulence and AMR gene cargo (11, 17, 27, 28).

To examine interspecies transmission and foodborne ExPEC infections, studies that focus on microbial transmission between humans, animals, and natural environments coupled with detailed investigations of MGEs that the microbes carry are needed. The ExPEC lineage ST95 is a key candidate for such a study because of the following: (i) it is a leading cause of UTI and bloodstream infection (BSI) (29–31) and a major cause of bacterial meningitis, particularly in newborns (31, 32); (ii) it is infrequently resistant to CIAs despite being pandemic; thus, resistance traits do not explain its global dominance (14); (iii) it is likely to be underestimated as a cause of serious extraintestinal disease (7); (iv) it is often identified as a commensal in the feces of diverse hosts (33–35), so it has a means to spread readily via food and/or water; and (v) it is a likely ExPEC lineage to cause zoonotic infections. Evidence pointing to its candidacy for zoonotic infections includes association of ST95 lineages with infection in both poultry and

humans (36) and the carriage of ColV plasmids and other closely related elements such as ColBM plasmids (37), here referred to as ColV-like plasmids (ColVLPs). ColV-like plasmids (i) are definitive of the APEC pathotype (38), (ii) carry an arsenal of virulence genes that encode adhesins, toxins, iron sequestration, and serum survival capabilities critical for survival in extraintestinal sites (39, 40), (iii) are associated with the ability to cause extraintestinal disease in diverse animal models of human disease (41, 42), (iv) play a key role in the evolution of hybrid *E. coli* pathotypes (43), and (v) confer ExPEC capabilities to otherwise commensal *E. coli* isolates (41, 44). ColV-associated genes have been also detected in *E. coli* isolated from retail poultry meat (45, 46).

A study of 86 ST95 isolates sourced from U.S. hospitals identified several major sub-lineages linked to the carriage of specific *fimH* alleles and examined the genetic basis for the acquisition of antibiotic resistance genes (ARGs) (14). A pansusceptible ST95 lineage carried an F virulence plasmid closely related to pUTI89, whereas lineages that displayed multiple drug resistance (MDR) did not carry such a plasmid (14). pUTI89 and related plasmids carry a suite of virulence genes involved in iron acquisition and toxin production and are required to establish intracellular bacterial communities in bladder epithelial cells (47). Of the 86 isolates in the study, 34 (40%) carried AMR genes, often on large conjugal plasmids that remained largely uncharacterized (14). One of these, pSF-088-1 (48), is a ColV F virulence plasmid that carries a complex resistance region with a unique genetic signature identified in MDR *E. coli* with diverse STs in Australia and elsewhere (44).

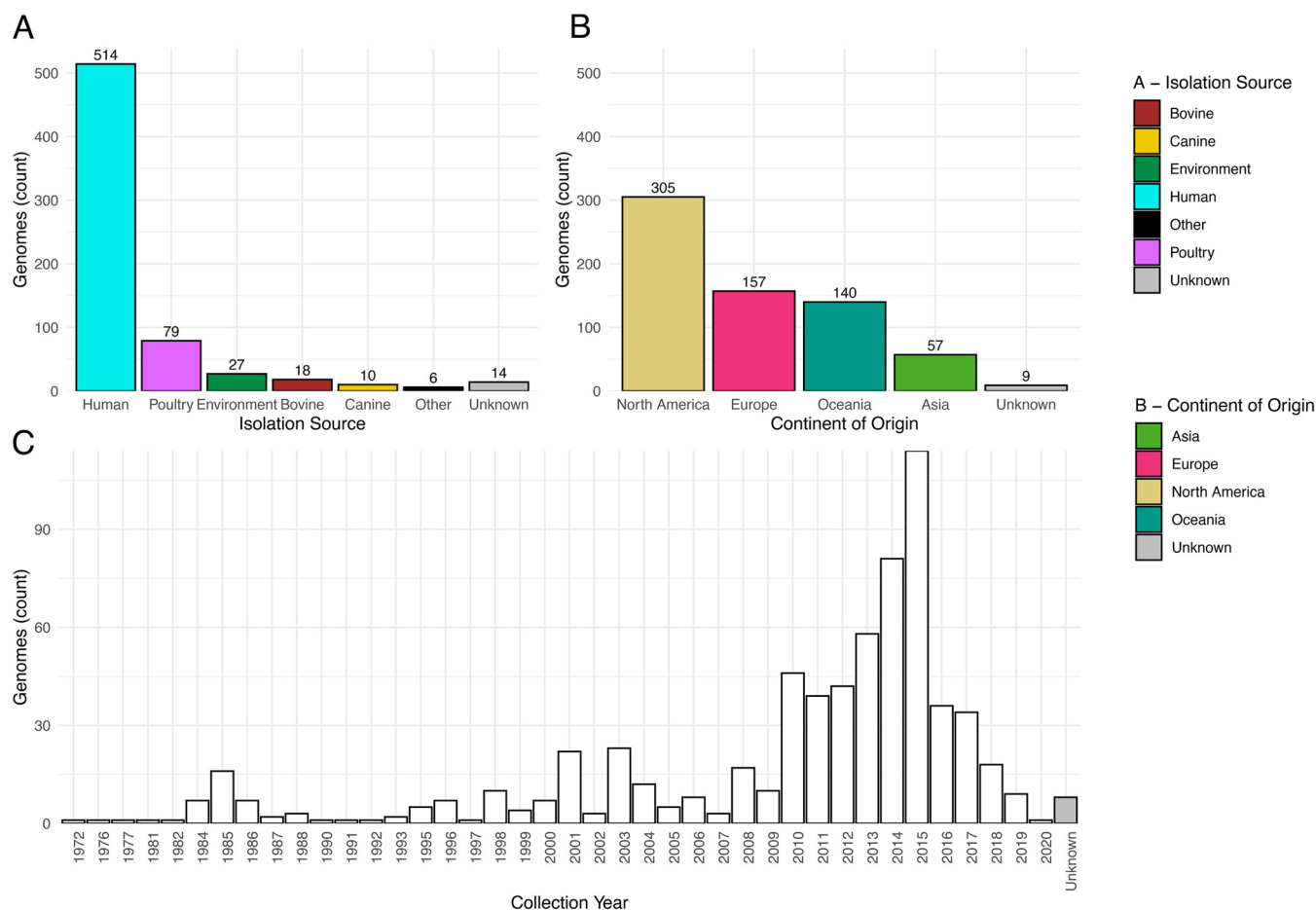
While ColV-like plasmids and virulence plasmids similar to pUTI89 are known to be carried by ST95, plasmid associations within ST95 sublineages are poorly understood. Additionally, genomic epidemiological studies of ST95 to date have not investigated isolates from diverse sources but have compared either ST95 isolates from extraintestinal cases of disease in humans and diseased poultry animals (APEC isolates) (36) or only human-associated isolates (49). To address these gaps, we characterized the genomes of 668 geographically diverse ST95 isolates collected from companion animals, natural environments, food animals, and humans over a 40-year period and applied high-resolution phylogenetic and pangenomic analyses to explore both chromosomal and plasmid lineages. We also screened 34,176 geographically, temporally, and source diverse *E. coli* genomes comprising 2,570 STs to gain insights into the role of ST95-associated virulence plasmids in ExPEC infections more broadly.

## RESULTS

**Analysis of global, source diverse ST95 isolates revealed a larger pangenome than previously recognized.** Genomic assemblies of 668 ST95 isolates from diverse niche, geographical, and temporal origins were characterized (Fig. 1). Most originated from humans (514/668 [77%]), of which 74% (380/514) were recovered from patients with a UTI (183/514 [36%]) or a systemic infection (197/514 [38%]). The next largest group of isolates originated from poultry (79/668 [11%]), which included APEC (43/79 [54%]) and isolates sourced from poultry meat (33/79 [42%]). The remaining isolates originated from the environment, cattle, dogs, and other sources; 14 isolates have an unknown origin. Isolates originated across multiple continents and spanned 4 decades (1972 to 2020). Additional metadata are shown in Table S1 in the supplemental material.

The core and pangenome (which includes both the core and accessory genomes) of ST95 isolates in the collection comprised 3,180 and 22,976 genes, respectively. While the size of the core genome is comparatively stable across studies of ST95 (36, 49, 50), in this study, the pangenome was approximately 50% larger than in previous estimates (36, 49).

**Identification of five novel ST95 clades.** Phylogenomic analysis of both the core genome and the accessory genome of ST95 generated trees with similar topologies (Fig. 2 and Fig. S2 [[https://github.com/maxlcummins/ST95/blob/main/Supplemental\\_Fig\\_S2.tif](https://github.com/maxlcummins/ST95/blob/main/Supplemental_Fig_S2.tif)]) which were in agreement with *fimH* typing, serotyping, fastbaps clade designations, and cgMLST HC200 (see Materials and Methods). In general, isolates of a

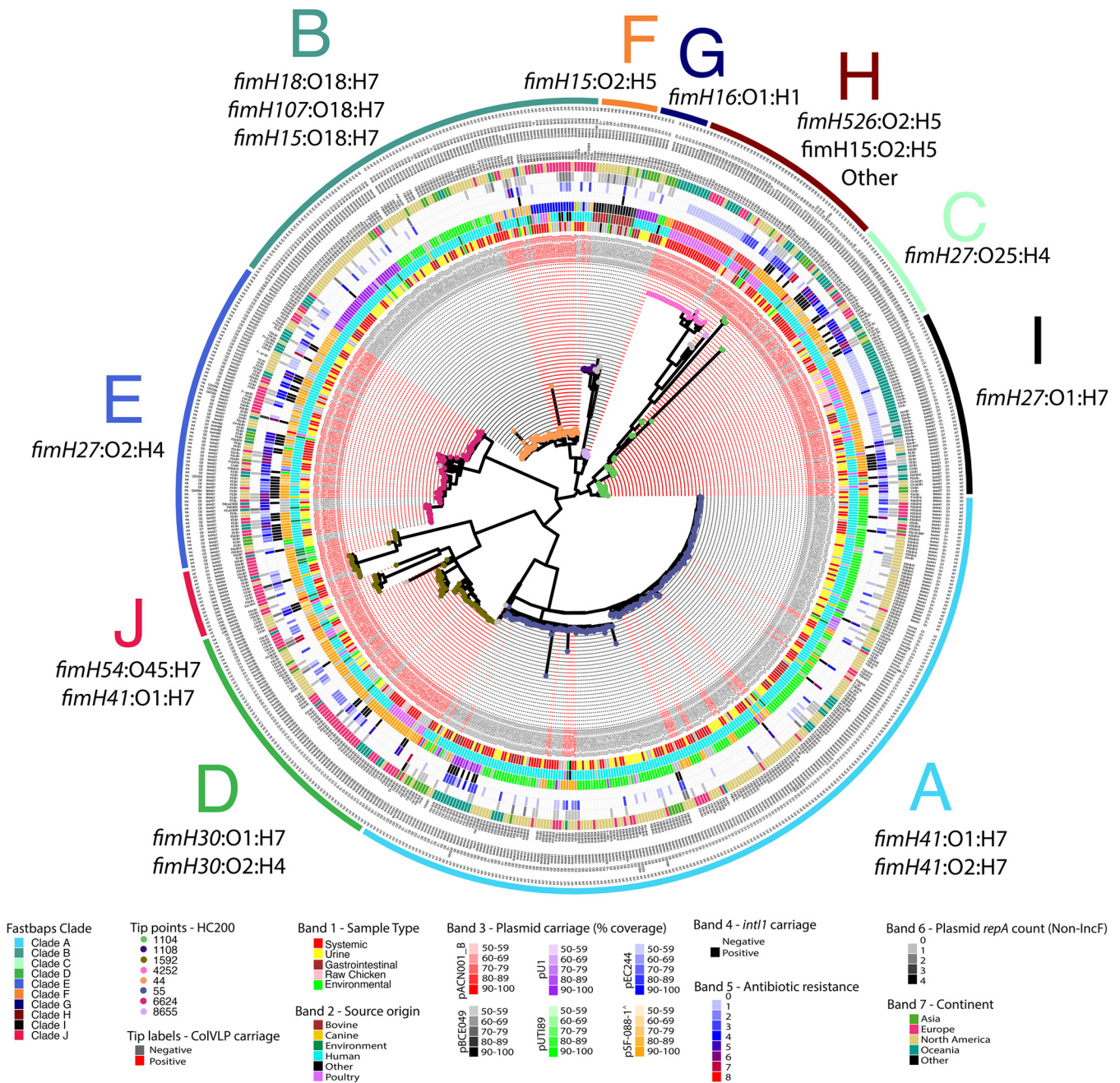


**FIG 1** A visualization of the isolation source (A), continent of origin (B), and collection year (C) of 668 ST95 isolates under investigation.

given HC200 group clustered closely, but within particular HC200 groups some isolates diverged at both core genome and accessory genome levels, such as for isolates of HC200:8655 (Fig. S2 [[https://github.com/maxcummins/ST95/blob/main/Supplemental\\_Fig\\_S2.tif](https://github.com/maxcummins/ST95/blob/main/Supplemental_Fig_S2.tif)]). Our core genome phylogeny in combination with fastbaps identified five previously reported clades of ST95 (A, B, C, D, and E) (50) and an additional five clades (F, G, H, I, and J) (Fig. 2). This clade structure was also supported by an accessory gene phylogeny (Fig. S2 [[https://github.com/maxcummins/ST95/blob/main/Supplemental\\_Fig\\_S2.tif](https://github.com/maxcummins/ST95/blob/main/Supplemental_Fig_S2.tif)])). All clades within this analysis contained isolates sourced from three or more continents, indicating global dissemination.

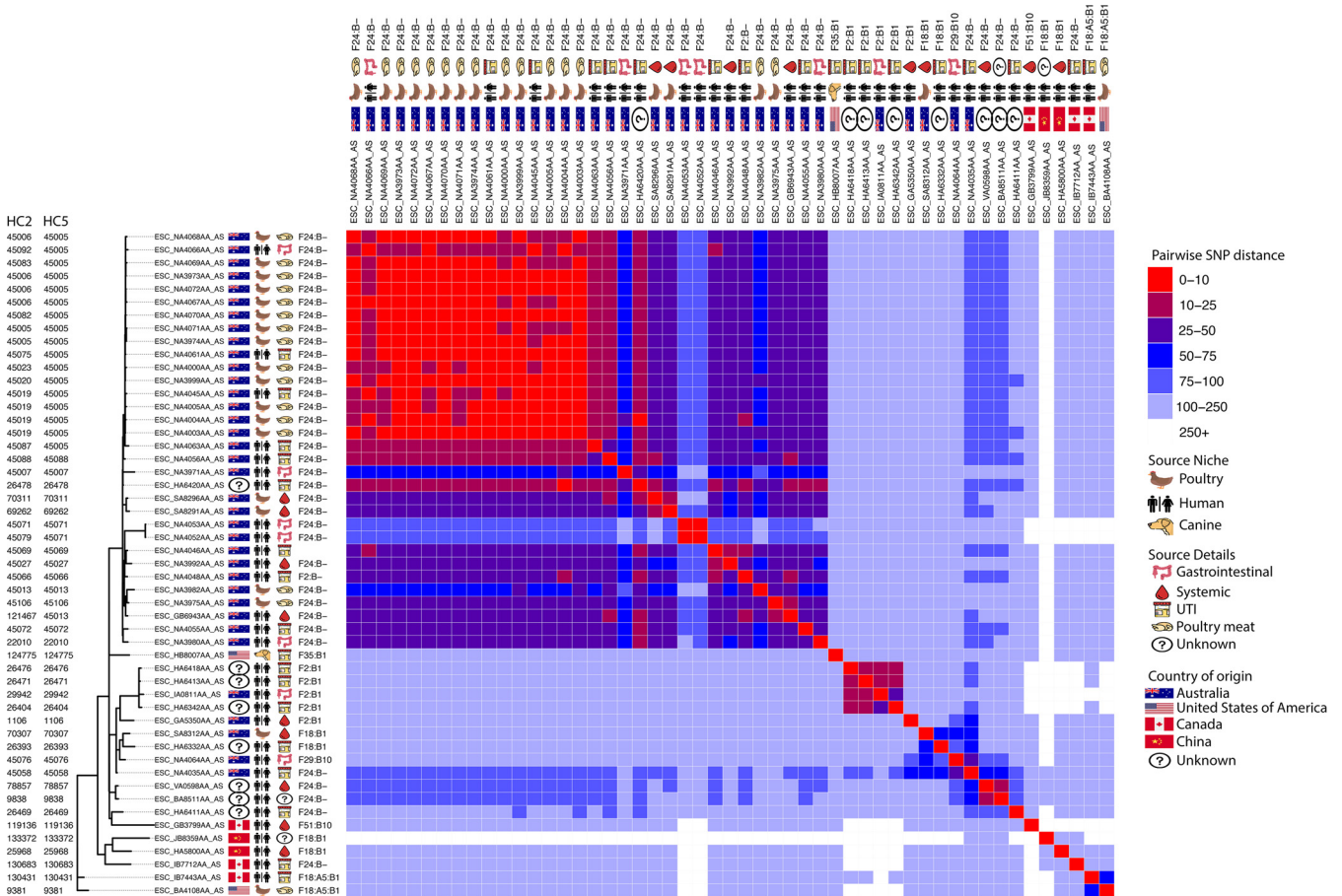
Clade F, which is predominantly *fimH15* and serotype O2:H5, comprises a predominantly bovine-associated sublineage. Isolates in the closely related clade G are predominantly *fimH16* and serotype O1:H5 and were sourced mostly from humans and carry multiple plasmid types. Clade H is phylogenetically diverse and represents a number of *fimH* types, serotype combinations, and ColV-like plasmids and is enriched with isolates with a poultry source. Isolates in clade I are mostly *fimH27* with serotype O1:H7 and often carry ColV-like plasmids. Lastly, clade J (*fimH54*:O45:H7; previously described as being part of clade D) comprised mostly ColV plasmid-carrying isolates from Asia.

**Evidence of interspecies transmission of *E. coli* ST95 clones.** Given the known zoonotic potential of ST95, we examined core genomic differences between pairs of isolates to identify potential interspecies transmission events. Some clades exhibited a degree of host specificity, while others housed isolates from multiple host types (Fig. 2). Intrasource clonality (clonality being defined as isolates exhibiting 25 or fewer core genomic single nucleotide polymorphisms [SNPs]) was observed in multiple clades, while evidence of intersource transmission, particularly between human and



**FIG 2** Core genome-based phylogeny visualizing the relatedness of ST95 isolates. Red tip labels (indicating sample names) indicate carriage of a CoVLP plasmid, and gray tip labels indicate no carriage of a CoVLP plasmid (as per the Liu criteria), while tip points are colored based on cgMLST HC200 groups. Concentric colored rings from innermost to outermost show isolate source, coverage of one of six reference plasmids, count of antibiotic classes to which an isolate is resistant, carriage of class 1 integrase gene *intI1*, count of non-IncF *repA* genes, and country of origin. Text outward of these colored bars lists the IncF RST, *fimH* type, O type, and H type. Where a type is missing for a given isolate, F plasmid *repA* genes were not detected. Outermost letters on the core genome phylogeny indicate clade designations, and proximal to a given clade label is the primary *fimH* and serotype(s) associated with a given clade. Tree is midpoint rooted. Detail in this figure is best viewed in its digital format.

poultry sources, was particularly evident in clade I (Fig. 2 and Fig. S3 [https://github.com/maxcummins/ST95/blob/main/Supplemental\_Fig\_S3.tif]), highlighting this clade as one of interest in regard to potential zoonotic transfer events. Isolates in clade I originated primarily from Australia (36/51 [71%]), with the remainder being from other (8/51 [16%]) or unknown (7/51 [14%]) continents. Apart from a single isolate from an episode of UTI in a dog from the United States, all were sourced from poultry or humans. Most isolates from poultry were from retail poultry meats, and most human isolates

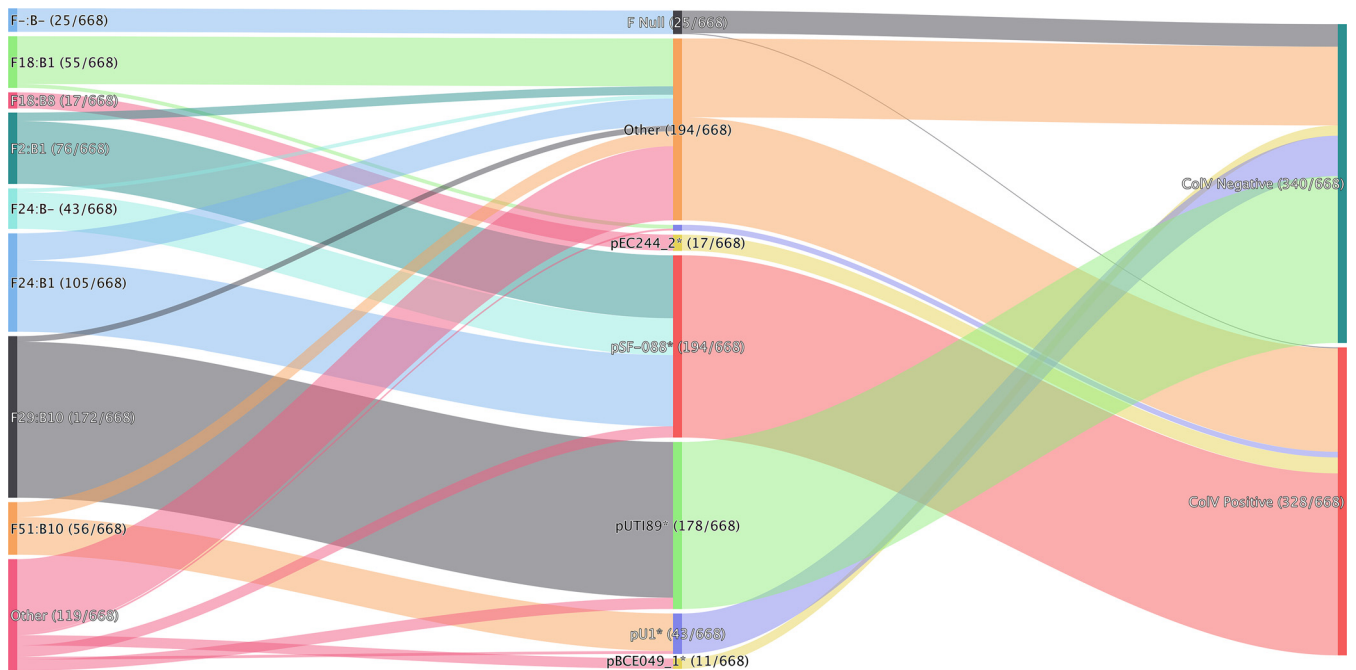


**FIG 3** Maximum likelihood tree visualizing the core genome similarity of clade I. Immediately adjacent to tip labels are icons depicting metadata. The portion to the right is a heat map visualizing pairwise SNP distances. Tree is midpoint rooted.

were from extraintestinal infections (Fig. 3). We then characterized clade I isolates in terms of AMR, virulence-associated traits, and F plasmid carriage. Every isolate from clade I carried at least one AMR gene or FQR-associated SNP, but only 24% (12/51) were considered MDR. Notably, 92% of isolates from clade I (47/51) carried tetracycline resistance determinant *tet(B)*, but few isolates carried genes conferring resistance to CIAs (Fig. S4 [https://github.com/maxcummins/ST95/blob/main/Supplemental\_Fig\_S4.tif]).

Clade I isolates carried the following: iron acquisition genes from the aerobactin (*iucD*) and yersiniabactin (*iroN*) operons (47/51 [92%]), *fecA* (51/51 [100%]), and *fyuA* (51/51 [100%]); genes involved in immune system evasion, including *iss* (51/51 [100%]), *traT* (49/51 [96%]), and *ompT* (49/51 [96%]); neonatal meningitis-associated *E. coli* (NMEC)-associated genes *kpsMTIII* (47/51 [92%]), *gimB* (27/51 [93%]), and *neuC* (33/51 [67%]); and the pyelonephritis-associated pilus gene *papGII* (51/51 [100%]). Notably, almost all clade I isolates (46/51 [90%]) carried a ColV-like plasmid (Fig. S4 [https://github.com/maxcummins/ST95/blob/main/Supplemental\_Fig\_S4.tif]). Clade I contained an Australian-specific clonal sublineage comprising human ExPEC, human gastrointestinal and poultry meat isolates differing by fewer than 10 SNPs and sharing an HC5 (or in some cases HC2) group, an F replicon sequence type (IncF RST), and high genotypic similarity (Fig. 2 and Fig. S4 [https://github.com/maxcummins/ST95/blob/main/Supplemental\_Fig\_S4.tif]). All isolates in this overlap group were sourced from Canberra, Australia, between 2013 and 2016 (46).

**The ST95 F plasmidome is diverse but largely comprises two F virulence plasmid types.** We screened the ST95 collection for IncF RSTs, a family of conjugal plasmids known to be common in commensal *E. coli* and frequent carriers of virulence-associated genes and AMR genes. Our rationale was that this would allow us to detect



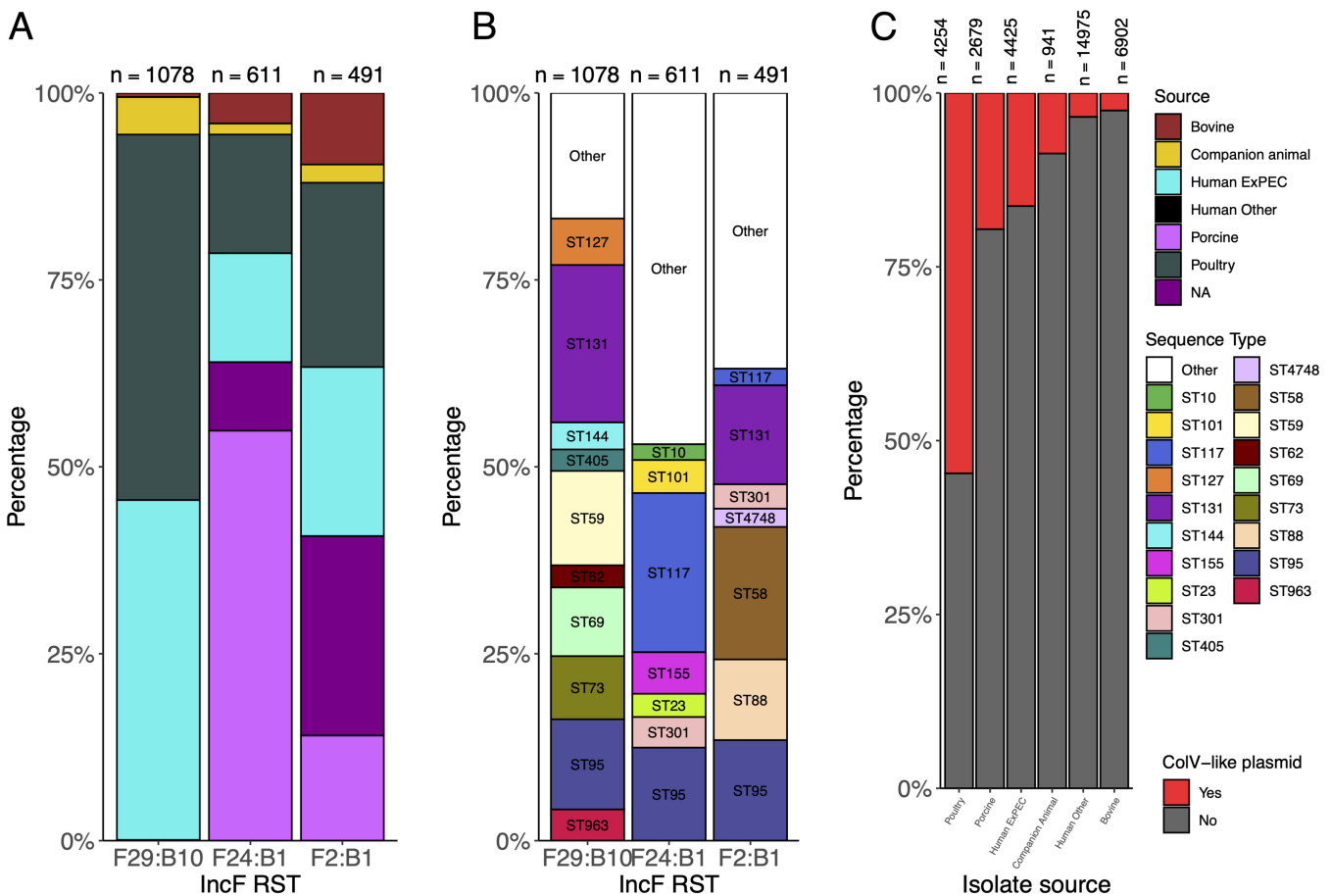
**FIG 4** A visualization of the relationship of carriage of reference plasmids, IncF replicon sequence types, and ColV status of ST95 isolate.

genetic material with disease-related potential moving between ecological niches. Almost all ST95 isolates (643/668 [96%]) carried an IncF plasmid, as defined by IncF RST (Fig. 4). Two plasmid lineages were substantially more prevalent than others. Of the ST95 isolates carrying an IncF plasmid, approximately half carried ColV-like plasmids (328/668 [49%]). Most (194/328 [59%]) of the ColV-like plasmids were pSF-088-1\*, a plasmid type originally isolated from an ST95 sepsis-associated *E. coli* from San Francisco General Hospital in 2013 (48, 51). Strikingly, more than half (178/340 [52%]) of the remaining ColV-negative isolates harbored pUTI89\* (see Materials and Methods for explanation of asterisk) instead. pUTI89 (IncF RST F29:B10) is a well-characterized plasmid with roles in UTI pathogenesis (47, 52). It was originally described for a uropathogenic *E. coli* (UPEC) isolate, UTI89 (ST95:O18:K1:H7) (53), and is frequently encountered in clinical *E. coli* isolates (47, 54). In our analysis, we found that isolates carrying ColV-like plasmids carried significantly more virulence-associated genes than their counterparts that did not carry such plasmids (mean counts of 49.4 and 44.4, respectively [*t* test  $P \leq 2.2e-16$ ]) (Table S1).

pSF-088-1\* plasmids, typical of many of the ColV plasmids in our ST95 collection, were present in ST95 isolates from both human-associated (133/514 [26%]) and poultry-associated (41/79 [52%]) ST95 isolates. In contrast, pUTI89\* plasmids were niche restricted. Ninety-nine percent of pUTI89\* plasmids carrying ST95 originated from humans (176/178). This plasmid was absent from poultry isolates and was present in nonhuman sources in only 1% of cases (2/178). To a lesser extent, other ColV-like plasmids were observed in our collection, as were other less predominant non-ColV-like plasmids (Fig. 4 and Table S1).

**pUTI89 and ColV-like plasmids are common in pandemic ExPEC lineages.** We sought to contextualize F plasmid carriage within the broader context of *E. coli*. To this end, we analyzed IncF RSTs associated with pUTI89\* and ColV-like plasmids among 34,176 genomic assemblies from Enterobase comprising 2,570 multilocus sequence types (MLSTs). The patterns of prevalence in the wider *E. coli* set were broadly similar to those seen in our ST95 collection. Likewise, in the wider *E. coli* set, the association between plasmid lineage and host range mirrored that seen in our ST95 collection.

F29:B10 (the IncF RST typical of pUTI89) was the third most prevalent IncF RST across all *E. coli* isolates (Fig. 5). Approximately 94% of genomes with F29:B10 were



**FIG 5** Plasmids and sequence types present in 34,176 genomes from Enterobase. (A) Distribution of source associations among IncF RST-carrying isolates; (B) distribution of STs among IncF RST-carrying isolates; (C) ColV-like carriage versus source association of *E. coli*.

sourced from humans, more than half of which were sourced from humans with extra-intestinal disease. Furthermore, while F29:B10 was the second most common IncF RST in humans, it was notably absent from the 4,345 poultry isolates available for analysis and almost completely absent from *E. coli* sourced from pigs (1/2,679 [0.04%]) and cattle (6/6,902 [0.09%]) (Fig. 5A). ColV-like plasmids with IncF RSTs F24:B1 and F2:B1 appeared frequently in the ST95 cohort in poultry-associated and human ExPEC isolates, and this observation was mirrored in the broader *E. coli* cohort (Fig. 5).

Our analysis of the intersection of *E. coli* MLST and IncF RST found that F29:B10-associated STs include major pandemic ExPEC lineages such as ST131, ST73, ST69, and ST95, but the association was source restricted within those STs. We also found that ColV-like plasmids were highly represented among poultry isolates (2,327/4,254 [55%]) but also present in 16% (720/4,425) of human ExPEC isolates. A complete list of isolate metadata and IncF RSTs are available in Table S2 ([https://github.com/maxcummins/ST95/blob/main/Supplemental\\_Table\\_S2.txt](https://github.com/maxcummins/ST95/blob/main/Supplemental_Table_S2.txt)).

**Multidrug resistant ST95 isolates are associated with carriage of ColV-like plasmids and a class 1 integrase.** Twenty-two percent (148/668) of isolates in the ST95 cohort were resistant to three or more antibiotic classes based on genotype, and nearly half (320/668 [48%]) carried one or more antibiotic resistance genes (Table 1). Most prevalent were genes (or SNPs) associated with resistance to  $\beta$ -lactams, trimethoprim/sulfonamides, aminoglycosides, and fluoroquinolones. Infrequently encountered were genes encoding resistance to CIAs.

An investigation of plasmid type and resistance gene carriage (Table 1) revealed a positive correlation between AMR gene and ColV-like plasmid carriage. Of the 320 ST95 isolates in our cohort with one or more antibiotic resistance genes, 68% (216/



**TABLE 1** Genotypic resistance among ST95 isolates and its relationship with carriage of ColV-like plasmids

Antimicrobial class or resistance type	No. (%)		P value <sup>a</sup>	Total count, no. (%) (n = 668)
	ColV <sup>+</sup> (n = 328)	ColV <sup>-</sup> (n = 340)		
Beta-lactams	109 (33.2)	80 (23.5)	**	189 (28.30)
Sulfonamides	122 (37.2)	49 (14.4)	***	171 (25.60)
Aminoglycosides	93 (28.4)	51 (15.0)	***	143 (21.40)
Tetracyclines	105 (32.0)	17 (5.0)	***	122 (18.30)
Trimethoprim	87 (26.5)	21 (6.2)	***	108 (16.20)
Fluoroquinolones <sup>b</sup>	44 (13.4)	22 (6.5)	**	66 (9.90)
ESBLs <sup>b</sup>	22 (6.7)	15 (4.4)	-	37 (5.50)
Amphenicols	16 (4.9)	4 (1.2)	**	20 (3.00)
Macrolides/lincosamides <sup>b</sup>	10 (3.0)	8 (2.4)	-	18 (2.70)
Polymyxins <sup>b</sup>	3 (0.9)	0 (0.0)	-	3 (0.45)
AMR	216 (65.9)	104 (30.6)	***	320 (47.90)
MDR	99 (30.2)	49 (14.4)	***	148 (22.20)
CIA resistance	62 (18.9)	35 (10.3)	***	97 (14.50)

<sup>a</sup>\*\*\*,  $P \leq 0.0005$ ; \*\*,  $P \leq 0.005$ ; \*,  $P \leq 0.05$ ; -,  $P > 0.05$ .

<sup>b</sup>Critically important antimicrobials.

320) carried ColV-like plasmids ( $\chi^2$  test  $P \leq 2.2e-16$ ) (Table S3). Similarly, of the 148 MDR ST95 isolates in our cohort, 67% (99/148) carried ColV-like plasmids ( $\chi^2$  test  $P = 9.259e-07$ ). Isolates carrying ColV-like plasmids exhibited higher genotypic resistance (average of 1.8 classes of antibiotics per isolate) than ST95 isolates that did not carry ColV-like plasmids (average of 0.74 class of antibiotic per isolate) ( $t$  test  $P = 6.8e-15$ ). Notably, AMR and MDR among ColV-positive isolates was not class specific for any antibiotic. Genotypic resistance was significantly more common among ColV<sup>+</sup> ST95 isolates for almost all classes of antibiotics investigated (Table S3), with genes encoding ESBLs, macrolides/lincosamides, and polymyxins an exception. It was notable but perhaps unsurprising that AMR ( $\chi^2$  test  $P \leq 2.2e-16$ ) and MDR ( $\chi^2$  test  $P \leq 2.2e-16$ ) isolates were significantly associated with carriage of the class 1 integrase gene *intI1*, a gene significantly more common in isolates with ColV-like plasmids (Table S3).

Given the prevalence of pUTI89\* among ColV<sup>-</sup> isolates, we also investigated the association between pUTI89\* carriage and resistance traits. pUTI89\*-carrying isolates exhibited less carriage of AMR genes (measured as the count of classes to which an isolate carried an AMR gene) than the broader ST95 cohort (0.39 versus 1.26 [ $t$  test,  $P = 6.142e-16$ ]) but also relative to other ST95 isolates which were ColV<sup>-</sup> but carried other F plasmid types (0.39 versus 0.74;  $P = 0.001541$ ). In summary, ST95 isolates that carry pUTI89\* carry significantly fewer AMR genes than other ST95 isolates irrespective of their ColV plasmid status.

## DISCUSSION

**Clonal overlap of ST95 isolates from poultry and humans indicates interspecies transfer.** A large body of *in vivo*, *in vitro*, and *in silico* evidence now substantiates the zoonotic capacity of ExPEC and APEC lineages and the potential occurrence of foodborne UTIs (1, 16, 18, 36, 55). However, examples of clonally related isolates from poultry and humans with epidemiologically relevant geographical and temporal linkage are limited, and as a result, the foodborne-UTI hypothesis remains controversial. Our analysis of ST95, particularly the clonal poultry-human group identified in clade I, adds considerable weight to the zoonotic capacity of ExPEC and APEC lineages and the foodborne-UTI hypothesis. The extensive similarity in the core and accessory genomes of clade I ST95 isolates, along with their tight temporal and geographical linkage, strongly suggests multiple transfer events between poultry and humans. In addition, we note that our observations from analyses of clade I would not have come to light if selection of ST95 isolates for this study had been prefaced on nonsusceptibility to

CIAs. In addition, our data support the contention that colocalized and time-sensitive, cross-source sampling is invaluable in investigating the potential for interspecies transmission of ExPEC pathogens (23).

The directionality of interspecies transmission is challenging to predict, and we also cannot rule out coacquisition of these clones from a so-far-uncharacterized source. Nonetheless, the weight of evidence suggests that the flow is from poultry to humans. Worldwide, there are approximately 26 billion chickens (56), and colibacillosis caused by APEC that overwhelmingly carry ColV plasmids is the most common bacterial poultry disease (57). Poultry-associated *E. coli* (i) are common as contaminants of retail poultry meat (46, 58), (ii) contaminate areas used to prepare poultry meats (59, 60), and (iii) are recovered from the gastrointestinal tracts of healthy humans (61). Furthermore, demand for poultry products is increasing (62, 63), and poultry manure is used widely as fertilizer, despite being rich in AMR and pathogenic *E. coli* (64). Poultry consumption is also associated with an increased risk of contracting an antibiotic-resistant UTI (65). Collectively, these data support the contentions that poultry constitute a reservoir of human ExPEC, that poultry products may constitute a means for the dissemination of these pathogens, and that the occurrence of such dissemination events might be expected to increase as the poultry sector grows.

It is also notable that nearly all members of the poultry-human overlap group (50/51) in clade I carry ColV-like plasmids. While ColV-like plasmids are common in many sources, including swine, they are disproportionately carried by poultry-associated *E. coli* (Fig. 5). Isolates hosting ColV-like plasmids exhibit enhanced ability to form biofilms (66) and display resistance to chlorine (67). Chlorine is used in some countries to control microbial contamination of freshly slaughtered poultry, and isolates carrying ColV plasmids may have a competitive advantage for persistence on poultry meats (68).

**ColV-like plasmids are common in ST95 isolates, linked with broad host range and pathogenicity, and linked with increased AMR and virulence.** Beyond clade I, analysis of the plasmidome of our ST95 collection identified ColV-like plasmids as prevalent among both poultry and human isolates. All of the ST95 isolates sourced from poultry carried a ColV plasmid (79/79), including poultry meat and APEC, as did 42% (216/514) of human isolates, 25% (18/72) of gastrointestinal *E. coli* isolates, and 41% (156/380) of human ExPEC isolates. This multihost distribution in both commensal and pathogenic niches can be explained by the fact that ColV-like plasmids carry genes which can enhance gastrointestinal colonization as well as extraintestinal pathogenicity in both poultry and humans (41, 47, 69–71).

Carriage of ColV-like plasmids was associated with significantly higher counts of virulence-associated genes. This is expected; however, our results also suggest that the contribution to virulence of ST95 made by ColV-like plasmids may be accelerated through antibiotic selection pressures coselecting for more virulent *E. coli* lineages. In our study, isolates carrying ColV-like plasmids, on average, carried more resistance genes than their counterparts without such plasmids. Further, AMR genes could be linked to scaffolds containing fragments of ColV plasmids in ST95 assemblies (Table S4). These observations are in line with previous studies showing that some ColV-like plasmids carry virulence and resistance gene cargo (17, 35, 40, 44, 48). We also observed shared IncF RSTs across ST95 isolates from different sources and across phylogenetic backgrounds, suggesting intersource plasmid transmission events. These findings are also consistent with those of other studies showing that closely related plasmids are shared between humans, food animals, and urban-adapted wild birds (12, 17, 72, 73).

Given the scale of global poultry production and the dominance of *E. coli* lineages such as ST95, ST117, ST73, ST350, ST429, ST57, and ST973, many of which carry ColV-like plasmids with class 1 integrons (37), poultry represent a huge reservoir for these F virulence plasmids. Stewardship practice in Australia has likely played a major role in preventing the introduction of genes encoding resistance to CIAs from becoming endemic in intensive animal industries (37, 74), but the same cannot be said for poultry operations overseas (75–77). Our analysis did detect the presence of the insertion

element IS26 on scaffolds derived from ColV-like plasmids in ST95 isolates in our collection. IS26 is an element renowned for capturing and mobilizing ARGs (73, 78), assembling complex resistance regions (79), promoting plasmid fusion (80, 81), and ameliorating plasmid fitness cost (81). This has important implications, as it increases the likelihood of these variants capturing further and novel AMR gene cargo, including genes encoding resistance to CIAs.

**pUTI89 carriage is associated with low AMR in ST95 and associated with human sources across diverse *E. coli* sequence types.** Carriage of pUTI89\* was notable in the global ST95 cohort. Stephens et al. described carriage of pUTI89-like plasmids by a human-centric cohort of ST95 as being strongly associated with pansusceptibility to antibiotics (14). The results of our more expansive study are consistent with this earlier observation. These authors posited that carriage of pUTI89\* in *E. coli* potentially blocks acquisition of other non-IncF plasmids (14), which may in part explain this phenomenon. On a cautionary note, our data do not rule out the possibility that isolates carrying pUTI89\* plasmids may acquire antibiotic resistance genes, a notion supported by the observation that pUTI89 and some highly related plasmids carry a copy of IS26. Consistent with this view, we identified multiple instances of carriage of multiple resistance genes in isolates carrying pUTI89\* among the 34,176 *E. coli* sequences from Enterobase (data not shown).

It should be emphasized that pUTI89\* has been identified in many of the major pandemic ExPEC lineages, including ST95, ST131 (11, 82), and ST73 (83). Unlike ColV-like plasmids, carriage of pUTI89\* is indicative of the host range of ST95 and is strongly associated with human ExPEC but entirely absent from isolates in our ST95 collection sourced from poultry (Fig. 2 and 5). Similarly, carriage of pUTI89-associated IncF RST (F29:B10) from 34,176 *E. coli* isolates from Enterobase indicates that it is virtually absent from *E. coli* circulating in animal reservoirs, including poultry, porcine, and bovine isolates. Our data therefore provide evidence that carriage of pUTI89\* plasmids may be a hallmark of human-associated *E. coli* lineages irrespective of phylogenetic background. Genetic elements on pUTI89 may incur a fitness cost for *E. coli* and poorly colonize nonhuman hosts. Further work is needed to investigate this hypothesis. Improved understanding of genes carried on the pUTI89 backbone, their biological relevance, and their conservation in other closely related mobile genetic elements is scope for further study. Such knowledge could be used to develop a screening method for pUTI89\* plasmids, similar to the criteria of Liu et al. for ColV carriage (11) that were applied with great success in this study.

Our study provides novel insight into the phylogenetic structure of ST95 and its interplay with F plasmid carriage, antibiotic resistance, and host range. Our work (i) focuses on the clinical importance of ST95 and other ExPEC that carry pUTI89\* (IncF-RST F29:B10) and their restricted colonization of humans irrespective of phylogenetic background and (ii) highlights the potential for emergence of variants of this plasmid lineage that carry antibiotic resistance genes in what is otherwise a lineage of virulence plasmids with very minimal carriage of antibiotic resistance genes. Our observations in part provide some insight toward understanding why interspecies transmission of pathogenic *E. coli* between humans and food animals is complex (84) and needs to be addressed by avoiding sampling regimes underpinned by resistance to CIAs. We also cast further light on the important role of ColV-like plasmids in extraintestinal disease, their preponderance in *E. coli* lineages that colonize intensive animal production systems, particularly poultry, and their propensity to readily acquire antibiotic resistance genes (35, 44, 61). Finally, we provide some of the most compelling genomic epidemiological evidence thus far for the occurrence of foodborne UTIs caused by ST95 and profile this sequence type as a case study for One Health investigations into the host origins of ExPEC.

## MATERIALS AND METHODS

**Documentation and reproducibility.** For the purpose of *in silico* reproducibility, a GitHub repository available at <https://github.com/maxcummins/ST95> provides the information and files necessary to

perform all computational analysis, postprocessing, and data visualization steps, save for minor figure annotations performed in an image editor.

**Genome origins and isolate selection and data access.** Genomic assemblies of ST95 isolates were identified using Enterobase's (85) built-in search functionality. Note that no selection criteria for AMR isolates were employed. Enterobase was used to download these genomic assemblies and to source core genome MLST (cgMLST), serotype, and *fimH* type data (86). Strains with missing values for year, source, or country of isolation were removed. We also required genomic assemblies to have 50,000 or fewer low-quality bases, contain 600 or fewer scaffolds, exhibit genome sizes between 4.5 Mbp and 6.5 Mbp, and have a minimum coverage of 20. Accession numbers, metadata, and genotypic data are available for the ST95 cohort in Table S1.

An additional cohort of 34,176 phylogenetically diverse *E. coli* genomic assemblies comprising 2,570 STs was also downloaded from the same source. For accession numbers and metadata for this broader cohort, please see Table S2 ([https://github.com/maxcummins/ST95/blob/main/Supplemental\\_Table\\_S2.txt](https://github.com/maxcummins/ST95/blob/main/Supplemental_Table_S2.txt)). Note that while Enterobase houses considerably more genomes than we have downloaded, many genomes were excluded due to lacking metadata or having insufficient assembly quality. Scripts detailing the metadata and quality requirements can be found at <https://github.com/maxcummins/ST95>.

**Core genome multilocus sequence typing, pangenome-based phylogenetic analysis, and tree visualization.** Genomes were annotated with *dfast* (87) version 1.2.13 using the option “–use\_locustag\_as\_gene\_id,” while pangenomic analysis was performed using Roary (88) version 3.12.0 with the command line options “–e –n –r.” This facilitated the generation of a reference-independent ST95 phylogeny, a methodology chosen due to reference biases and their limited utility in quantifying SNP distances between isolates which are not clonally related. This involved creating a core genomic alignment for all ST95 isolates using Roary, totaling 2,953,300 bp in length. Subsequently, 17,234 variable sites were extracted from this alignment using *SNP-sites* version 2.4.1 (89), and maximum likelihood phylogenetic trees were built using IQtree version 2.0.3 (90) with ModelFinder (91) and UFBoot (92) enabled (options “–m MFP –bb 1000”), resulting in selection of the “GTR+F+ASC+R2” model and 1,000 bootstrap replicates. Pairwise SNP distances between isolates were quantified from the variable-site alignment using *snp-dists* (<https://github.com/tseemann/snp-dists>). Clade designations for tips were performed using the clustering algorithm *fastbaps* (93) version 1.0.4 with the variable-site alignment and its associated tree using the option “–pp baps.”

This process, save for *fastbaps* designation, was performed again for isolates from clade I to increase the size of the core genome and therefore provide greater confidence in the pairwise SNP distances between clade I isolates. For the second core genomic alignment, a 3,788,080-bp core gene alignment was generated, from which 1,432 variable sites were identified and used to generate a maximum likelihood tree with IQtree using the “K3P+ASC+R3” model and 1,000 bootstrap replicates.

To support data on core genomic SNP distances, we also utilized cgMLST and cgMLST hierarchical clustering (HCC). cgMLST clusters genomes based on their carriage of allelic variants of 2,350 core genomic loci. Enterobase's cgMLST database allows for grouping of isolates into hierarchical clusters which provide various levels of phylogenetic granularity based on core genome similarity (HC0 up to HC2350). Genomes sharing an HC2 level differ by  $\leq 2$  genes in the cgMLST scheme, for example. More information is available at <https://enterobase.readthedocs.io/en/latest/features/clustering.html>. Note that the ST95 core genome generated in the process described above is a different core genome from that used in the cgMLST scheme.

Phylogenetic trees and SNP distance matrices were visualized using custom R (94) scripts (<https://github.com/maxcummins/ST95>) utilizing R packages *ggtree* 1.16.6 (95), *dplyr* 0.8.3 (96), *magrittr* 1.5 (97), *ggplot2* 3.2.1 (98), *readr* 1.3.1 (99), *reshape2* 1.4.3 (100), *tidytree* 0.2.6 (101), and *ggimage* 0.2.8 (102). For more detailed methodology, please visit <https://github.com/maxcummins/ST95>.

**Genotypic characterization.** AMR-associated point mutations were detected using *Pointfinder* (103), while genotyping was performed by *abricate* version 0.9.8 (<https://github.com/tseemann/abricate>). Resistance, virulence, insertion sequence (IS), and plasmid gene databases utilized include CARD (104), virulence factor database (105), ISFinder (106) (<https://www-is.biotoul.fr>), and *PlasmidFinder* (107), respectively. Custom databases were used to genotype isolates for carriage of ColV-like plasmids as per the criteria of Liu et al. (11) and determine carriage of genes of interest absent in the aforementioned databases. All databases utilized are available at <https://github.com/maxcummins/ST95/dbs/abricate>. The script used to process *abricate*, *Pointfinder*, *IncF RST*, and *ColVLP* determination data is also available therein.

Please note that here we define (i) resistance to a particular class of antibiotic as carriage of a gene or SNP associated with resistance to that class of antibiotic, (ii) AMR as carrying one or more genes or SNPs associated with resistance to one or more classes of antibiotic, (iii) MDR as carrying genes or SNPs associated with resistance to three or more classes of antibiotic, and (iv) critically important antimicrobial (CIA) resistance as carriage of genes conferring resistance to the highest-priority CIAs as defined by the WHO (108).

**Plasmid screening and ColVLP determination.** Multiple approaches were used to explore the plasmid lineages within the ST95 cohort, including *IncF RST* (109), determination of *ColVLP*-carriage using the criteria of Liu et al. (11), and alignment to determine assembly coverage across reference plasmids. The last approach was utilized to cluster plasmid types across ST95 isolates with various *IncF RSTs* but similar plasmid backbones. Reference plasmids were selected by screening for the *IncF RSTs* of isolates, identifying representatives of major *IncF RSTs*, and manual extraction of scaffolds containing *IncF repA* genes was undertaken prior to querying NCBI's nucleotide database for complete plasmid sequences. Best-match reference plasmids were then downloaded and used to generate BLAST databases. Reference plasmids

include pSF-088-1, pUTI89, pBCE049, pU1, pEC244, and pACN001\_B (GenBank accession numbers CP012636, NC\_007941, CP042247, CP041358, CP019018, and KC853435, respectively). The relatedness of these plasmids can be seen in Fig. S1. Note that pSF-088-1 contained a resistance region which was removed to ensure that isolates carrying plasmids with close homology to the pSF-088-1 backbone were not penalized for absent resistance loci. This also allows a fairer comparison with the other reference plasmids which do not carry resistance loci and prevents isolates meeting coverage thresholds due to large AMR-associated MGEs present in other genetic contexts. Fasta files used to create databases for reference plasmid screening are available at <https://github.com/maxcummins/ST95/dbs/abricate>.

Subsequently, nucleotide databases were generated for each database using BLASTn function “makeblastdb” with the option “-hash\_index.” Abricate was then used to screen for carriage of a given plasmid, and isolates were defined as carrying plasmids closely related to a given reference where they shared  $\geq 95\%$  nucleotide identity and  $\geq 90\%$  coverage with a given reference plasmid. Note that for ease of writing, a given reference plasmid match is noted by using reference plasmid’s name followed by an asterisk (e.g., pUTI89\* carriage denotes where a genome exhibited  $\geq 95\%$  nucleotide identity and  $\geq 90\%$  coverage of pUTI89). In regard to the criteria of Liu et al. for ColVLP carriage, genomes exhibiting carriage of one or more ColV genes (defined as  $\geq 95\%$  nucleotide identity and  $\geq 90\%$  coverage) from four or more of the following sets of genes were considered to carry a ColVLP: (i) *cvaABC* and *cvi* (the ColV operon), (ii) *iroBCDEN* (salmochelin operon), (iii) *iucABCD* and *iutA* (the aerobactin operon), (iv) *etsABC*, (v) *ompT* and *hylF*, and (vi) *sitABCD*. Custom scripts used to compute reference plasmid coverage, determine ColVLP carriage, and process IncF RST data are available at <https://github.com/maxcummins/ST95>.

**Statistical analysis.** Comparisons of the frequencies of traits between groups of isolates, such as AMR and MDR rates among isolates with or without ColV-like plasmid carriage, were performed using the chi-square test. Comparisons of trait mean differences between groups of isolates were performed with a two-tailed Student *t* test. For both tests, a significance cutoff (*P*) of  $\leq 0.05$  was utilized. See <https://github.com/maxcummins/ST95> for scripts detailing statistical analysis.

**Data availability.** We provide the SRA accession numbers for all genomic data sets deposited in NCBI’s Sequence Read Archive (SRA) in Tables S1 and S2. For genomic assemblies produced by reads directly uploaded to Enterobase, assembly numbers are available in the same source. No additional genomic data were uploaded to either Enterobase or SRA by us for the purpose of this study.

## SUPPLEMENTAL MATERIAL

Supplemental material is available online only.

**FIG S1**, TIF file, 0.5 MB.

**TABLE S1**, TXT file, 1 MB.

**TABLE S3**, XLSX file, 0.01 MB.

**TABLE S4**, TXT file, 0.02 MB.

## ACKNOWLEDGMENTS

We extend our gratitude to those who have made their genomic sequence data publicly accessible. Thanks also to the Enterobase team for their development and upkeep of the Enterobase platform, which has proved invaluable to researchers in our field. We thank Fiona MacIver for her assistance in editing the manuscript.

Max Laurence Cummins: Conceptualization, Methodology, Software, Validation, Formal Analysis, Investigation, Data Curation, Writing — Original Draft, Visualization. Cameron J. Reid: Conceptualization, Software, Investigation, Data Curation, Writing — Review and Editing. Steven Philip Djordjevic: Conceptualization, Resources, Writing — Reviewing and Editing, Supervision, Project administration, Funding Acquisition.

We declare no conflicts of interest.

This project was partly funded by the Australian Centre for Genomic Epidemiological Microbiology (AusGEM), a collaborative partnership between the NSW Department of Primary Industries and the University of Technology Sydney. These results are helping to inform the OUTBREAK decision support system funded by the Medical Research Future Fund Frontier Health and Medical Research Program (MRFF75873).

## REFERENCES

1. Tivendale KA, Logue CM, Kariyawasam S, Jordan D, Hussein A, Li G, Wannemuehler Y, Nolan LK. 2010. Avian-pathogenic *Escherichia coli* strains are similar to neonatal meningitis *E. coli* strains and are able to cause meningitis in the rat model of human disease. *Infect Immun* 78: 3412–3419. <https://doi.org/10.1128/IAI.00347-10>.
2. Lai J, Zhu Y, Tang L, Lin X. 2021. Epidemiology and antimicrobial susceptibility of invasive *Escherichia coli* infection in neonates from 2012 to 2019 in Xiamen, China. *BMC Infect Dis* 21:295. <https://doi.org/10.1186/s12879-021-05981-4>.
3. Köstlin-Gille N, Härtel C, Haug C, Göpel W, Zemlin M, Müller A, Poets CF, Herting E, Gille C. 2021. Epidemiology of early and late onset neonatal sepsis in very low birthweight infants: data from the German Neonatal Network. *Pediatr Infect Dis J* 40:255–259. <https://doi.org/10.1097/INF.0000000000002976>.

4. Erickson TA, Munoz FM, Troisi CL, Nolan MS, Hasbun R, Brown EL, Murray KO. 2021. The epidemiology of meningitis in infants under 90 days of age in a large pediatric hospital. *Microorganisms* 9:526. <https://doi.org/10.3390/microorganisms9030526>.
5. La Combe B, Clermont O, Messika J, Eveillard M, Kouatchet A, Lasocki S, Corvec S, Lakhal K, Billard-Pomares T, Fernandes R, Armand-Lefevre L, Bourdon S, Reignier J, Fihman V, de Prost N, Bador J, Goret J, Wallet F, Denamur E, Ricard J-D, COLOCOLI Group. 2019. Pneumonia-specific *Escherichia coli* with distinct phylogenetic and virulence profiles, France, 2012. *Emerg Infect Dis* 25:710–718. <https://doi.org/10.3201/eid2504.180944>.
6. Foxman B. 2003. Epidemiology of urinary tract infections: incidence, morbidity, and economic costs. *Dis Mon* 49:53–70. <https://doi.org/10.1067/mda.2003.7>.
7. Manges AR, Geum HM, Guo A, Edens TJ, Fibke CD, Pitout JDD. 2019. Global extraintestinal pathogenic *Escherichia coli* (ExPEC) lineages. *Clin Microbiol Rev* 32:e00135-18. <https://doi.org/10.1128/CMR.00135-18>.
8. Manges AR, Johnson JR. 2015. Reservoirs of extraintestinal pathogenic *Escherichia coli*. *Microbiol Spectr* 3:3.5.06. <https://doi.org/10.1128/microbiolspec.JTI-0006-2012>.
9. Reid CJ, Blau K, Jechalke S, Smalla K, Djordjevic SP. 2019. Whole genome sequencing of *Escherichia coli* from store-bought produce. *Front Microbiol* 10:3050. <https://doi.org/10.3389/fmicb.2019.03050>.
10. Alegbeleye OO, Singleton I, Sant'Ana AS. 2018. Sources and contamination routes of microbial pathogens to fresh produce during field cultivation: a review. *Food Microbiol* 73:177–208. <https://doi.org/10.1016/j.fm.2018.01.003>.
11. Liu CM, Stegger M, Aziz M, Johnson TJ, Waits K, Nordstrom L, Gauld L, Weaver B, Rolland D, Statham S, Horwinski J, Sariya S, Davis GS, Sokurenko E, Keim P, Johnson JR, Price LB. 2018. *Escherichia coli* ST131-H22 as a foodborne uropathogen. *mBio* 9:e00470-18. <https://doi.org/10.1128/mBio.00470-18>.
12. Tarabai H, Wyrsh ER, Bitar I, Dolejska M, Djordjevic SP. 2021. Epidemic H12 plasmids mobilising the carbapenemase gene blaIMP-4 in Australian clinical samples identified in multiple sublineages of *Escherichia coli* ST216 colonising silver gulls. *Microorganisms* 9:567. <https://doi.org/10.3390/microorganisms9030567>.
13. Rapp D, Ross CM, Maclean P, Cave VM, Brightwell G. 2021. Investigation of on-farm transmission routes for contamination of dairy cows with top 7 *Escherichia coli* O-serogroups. *Microb Ecol* 81:67–77. <https://doi.org/10.1007/s00248-020-01542-5>.
14. Stephens CM, Adams-Sapper S, Sekhon M, Johnson JR, Riley LW. 2017. Genomic analysis of factors associated with low prevalence of antibiotic resistance in extraintestinal pathogenic *Escherichia coli* sequence type 95 strains. *mSphere* 2:e00390-16. <https://doi.org/10.1128/mSphere.00390-16>.
15. Mageiros L, Méric G, Bayliss SC, Pensar J, Pascoe B, Mourkas E, Calland JK, Yahara K, Murray S, Wilkinson TS, Williams LK, Hitchings MD, Porter J, Kemmett K, Feil EJ, Jolley KA, Williams NJ, Corander J, Sheppard SK. 2021. Genome evolution and the emergence of pathogenicity in avian *Escherichia coli*. *Nat Commun* 12:765. <https://doi.org/10.1038/s41467-021-20988-w>.
16. Nordstrom L, Liu CM, Price LB. 2013. Foodborne urinary tract infections: a new paradigm for antimicrobial-resistant foodborne illness. *Front Microbiol* 4:29. <https://doi.org/10.3389/fmicb.2013.00029>.
17. Reid CJ, McKinnon J, Djordjevic SP. 2019. Clonal ST131-H22 *Escherichia coli* strains from a healthy pig and a human urinary tract infection carry highly similar resistance and virulence plasmids. *Microb Genom* 5:e000295. <https://doi.org/10.1099/mgen.0.000295>.
18. Manges AR, Johnson JR. 2012. Food-borne origins of *Escherichia coli* causing extraintestinal infections. *Clin Infect Dis* 55:712–719. <https://doi.org/10.1093/cid/cis502>.
19. Lazarus B, Paterson DL, Mollinger JL, Rogers BA. 2015. Do human extraintestinal *Escherichia coli* infections resistant to expanded-spectrum cephalosporins originate from food-producing animals? A systematic review. *Clin Infect Dis* 60:439–452. <https://doi.org/10.1093/cid/ciu785>.
20. de Been M, Lanza VF, de Toro M, Scharringa J, Dohmen W, Du Y, Hu J, Lei Y, Li N, Tooming-Klunderud A, Heederik DJJ, Fluit AC, Bonten MJM, Willems RJA, de la Cruz F, van Schaik W. 2014. Dissemination of cephalosporin resistance genes between *Escherichia coli* strains from farm animals and humans by specific plasmid lineages. *PLoS Genet* 10:e1004776. <https://doi.org/10.1371/journal.pgen.1004776>.
21. Day MJ, Hopkins KL, Wareham DW, Toleman MA, Elviss N, Randall L, Teale C, Cleary P, Wiuff C, Doumith M, Ellington MJ, Woodford N, Livermore DM. 2019. Extended-spectrum  $\beta$ -lactamase-producing *Escherichia coli* in human-derived and foodchain-derived samples from England, Wales, and Scotland: an epidemiological surveillance and typing study. *Lancet Infect Dis* 19:1325–1335. [https://doi.org/10.1016/S1473-3099\(19\)30273-7](https://doi.org/10.1016/S1473-3099(19)30273-7).
22. Ludden C, Raven KE, Jamroz D, Gouliouris T, Blane B, Coll F, M de G, Naydenova P, Horner C, Hernandez-Garcia J, Wood P, Hadjirin N, Radakovic M, Brown NM, Holmes M, Parkhill J, Peacock SJ. 2019. One Health genomic surveillance of *Escherichia coli* demonstrates distinct lineages and mobile genetic elements in isolates from humans versus livestock. *mBio* 10:e02693-18. <https://doi.org/10.1128/mBio.02693-18>.
23. Loayza F, Graham JP, Trueba G. 2020. Factors obscuring the role of *E. coli* from domestic animals in the global antimicrobial resistance crisis: an evidence-based review. *Int J Environ Res Public Health* 17:3061. <https://doi.org/10.3390/ijerph17093061>.
24. Donnenberg M. 2013. *Escherichia coli*: pathotypes and principles of pathogenesis. Academic Press, London, United Kingdom.
25. Leverstein-van Hall MA, Dierikx CM, Cohen Stuart J, Voets GM, van den Munkhof MP, van Essen-Zandbergen A, Platteel T, Fluit AC, van de Sande-Bruinsma N, Scharinga J, Bonten MJM, Mevius DJ, National ESBL surveillance group. 2011. Dutch patients, retail chicken meat and poultry share the same ESBL genes, plasmids and strains. *Clin Microbiol Infect* 17:873–880. <https://doi.org/10.1111/j.1469-0691.2011.03497.x>.
26. Kluytmans JAJW, Overvest ITMA, Willemsen I, Kluytmans-van den Bergh MFQ, van der Zwaluw K, Heck M, Rijnsburger M, Vandenbroucke-Grauls CMJE, Savelkoul PHM, Johnston BD, Gordon D, Johnson JR. 2013. Extended-spectrum  $\beta$ -lactamase-producing *Escherichia coli* from retail chicken meat and humans: comparison of strains, plasmids, resistance genes, and virulence factors. *Clin Infect Dis* 56:478–487. <https://doi.org/10.1093/cid/cis929>.
27. Venturini C, Beatson SA, Djordjevic SP, Walker MJ. 2010. Multiple antibiotic resistance gene recruitment onto the enterohemorrhagic *Escherichia coli* virulence plasmid. *FASEB J* 24:1160–1166. <https://doi.org/10.1096/fj.09-144972>.
28. Cointe A, Birgy A, Mariani-Kurkdjian P, Liguori S, Courroux C, Blanco J, Delannoy S, Fach P, Loukiadis E, Bidet P, Bonacorsi S. 2018. Emerging multidrug-resistant hybrid pathotype Shiga toxin-producing *Escherichia coli* O80 and related strains of clonal complex 165, Europe. *Emerg Infect Dis* 24:2262–2269. <https://doi.org/10.3201/eid2412.180272>.
29. Parikh S, Goswami P, Anand A, Panchal H, Patel A, Kulkarni R, Shastri B. 2018. Clinical and microbiological profile of infections during induction phase of acute myeloid leukemia. *Gulf J Oncolog* 1:18–23.
30. Hastak P, Cummins ML, Gottlieb T, Cheong E, Merlino J, Myers GS, Djordjevic SP, Roy Chowdhury P. 2020. Genomic profiling of *Escherichia coli* isolates from bacteraemia patients: a 3-year cohort study of isolates collected at a Sydney teaching hospital. *Microb Genom* 6:e000371. <https://doi.org/10.1099/mgen.0.000371>.
31. Bonacorsi S, Clermont O, Houdouin V, Cordevant C, Brahimi N, Marecat A, Tinsley C, Nassif X, Lange M, Bingen E. 2003. Molecular analysis and experimental virulence of French and North American *Escherichia coli* neonatal meningitis isolates: identification of a new virulent clone. *J Infect Dis* 187:1895–1906. <https://doi.org/10.1086/375347>.
32. Peigne C, Bidet P, Mahjoub-Messai F, Plainvert C, Barbe V, Médigue C, Frapy E, Nassif X, Denamur E, Bingen E, Bonacorsi S. 2009. The plasmid of *Escherichia coli* strain S88 (O45: K1: H7) that causes neonatal meningitis is closely related to avian pathogenic *E. coli* plasmids and is associated with high-level bacteremia in a neonatal rat meningitis model. *Infect Immun* 77:2272–2284. <https://doi.org/10.1128/IAI.01333-08>.
33. Massella E, Reid CJ, Cummins ML, Anantanawat K, Zingali T, Serrano A, Piva S, Giacometti F, Djordjevic SP. 2020. Snapshot study of whole genome sequences of *Escherichia coli* from healthy companion animals, livestock, wildlife, humans and food in Italy. *Antibiotics* 9:782. <https://doi.org/10.3390/antibiotics9110782>.
34. Mukerji S, Gunasekera S, Dunlop JN, Stegger M, Jordan D, Laird T, Abraham RJ, Barton M, O'Dea M, Abraham S. 2020. Implications of foraging and interspecies interactions of birds for carriage of *Escherichia coli* strains resistant to critically important antimicrobials. *Appl Environ Microbiol* 86:e01610-20. <https://doi.org/10.1128/AEM.01610-20>.
35. Moran RA, Hall RM. 2018. Evolution of regions containing antibiotic resistance genes in FII-2-FIB-1 ColV-Colla virulence plasmids. *Microb Drug Resist* 24:411–421. <https://doi.org/10.1089/mdr.2017.0177>.
36. Jørgensen SL, Stegger M, Kudirkiene E, Lilje B, Poulsen LL, Ronco T, Pires Dos Santos T, Kiil K, Bisgaard M, Pedersen K, Nolan LK, Price LB, Olsen RH, Andersen PS, Christensen H. 2019. Diversity and population overlap between avian and human *Escherichia coli* belonging to sequence type 95. *mSphere* 4:e00333-18. <https://doi.org/10.1128/mSphere.00333-18>.

37. Cummins ML, Reid CJ, Roy Chowdhury P, Bushell RN, Esbert N, Tivendale KA, Noormohammadi AH, Islam S, Marendra MS, Browning GF, Markham PF, Djordjevic SP. 2019. Whole genome sequence analysis of Australian avian pathogenic *Escherichia coli* that carry the class 1 integrase gene. *Microb Genom* 5:e000250. <https://doi.org/10.1099/mgen.0.000250>.
38. Johnson TJ, Wannemuehler Y, Doetkott C, Johnson SJ, Rosenberger SC, Nolan LK. 2008. Identification of minimal predictors of avian pathogenic *Escherichia coli* virulence for use as a rapid diagnostic tool. *J Clin Microbiol* 46:3987–3996. <https://doi.org/10.1128/JCM.00816-08>.
39. Johnson TJ, Siek KE, Johnson SJ, Nolan LK. 2006. DNA sequence of a ColV plasmid and prevalence of selected plasmid-encoded virulence genes among avian *Escherichia coli* strains. *J Bacteriol* 188:745–758. <https://doi.org/10.1128/JB.188.2.745-758.2006>.
40. Johnson TJ, Logue CM, Johnson JR, Kuskowski MA, Sherwood JS, Barnes HJ, DebRoy C, Wannemuehler YM, Obata-Yasuoka M, Spanjaard L, Nolan LK. 2012. Associations between multidrug resistance, plasmid content, and virulence potential among extraintestinal pathogenic and commensal *Escherichia coli* from humans and poultry. *Foodborne Pathog Dis* 9:37–46. <https://doi.org/10.1089/fpd.2011.0961>.
41. Skyberg JA, Johnson TJ, Johnson JR, Clabots C, Logue CM, Nolan LK. 2006. Acquisition of avian pathogenic *Escherichia coli* plasmids by a commensal *E. coli* isolate enhances its abilities to kill chicken embryos, grow in human urine, and colonize the murine kidney. *Infect Immun* 74:6287–6292. <https://doi.org/10.1128/IAI.00363-06>.
42. Tivendale KA, Noormohammadi AH, Allen JL, Browning GF. 2009. The conserved portion of the putative virulence region contributes to virulence of avian pathogenic *Escherichia coli*. *Microbiology (Reading)* 155:450–460. <https://doi.org/10.1099/mic.0.023143-0>.
43. Cointe A, Birgy A, Bridier-Nahmias A, Mariani-Kurkdjian P, Walewski V, Lévy C, Cohen R, Fach P, Delannoy S, Bidet P, Bonacorsi S. 2020. *Escherichia coli* O80 hybrid pathotype strains producing Shiga toxin and ESBL: molecular characterization and potential therapeutic options. *J Antimicrob Chemother* 75:537–542. <https://doi.org/10.1093/jac/dkz484>.
44. McKinnon J, Chowdhury PR, Djordjevic SP. 2018. Genomic analysis of multidrug-resistant *Escherichia coli* ST58 causing urosepsis. *Int J Antimicrob Agents* 52:430–435. <https://doi.org/10.1016/j.ijantimicag.2018.06.017>.
45. Johnson TJ, Logue CM, Wannemuehler Y, Kariyawasam S, Doetkott C, DebRoy C, White DG, Nolan LK. 2009. Examination of the source and extended virulence genotypes of *Escherichia coli* contaminating retail poultry meat. *Foodborne Pathog Dis* 6:657–667. <https://doi.org/10.1089/fpd.2009.0266>.
46. Vangchhia BL. 2017. Genetic structure and antimicrobial resistance of foodborne *Escherichia coli* in Australia. PhD thesis. Australian National University, Canberra, Australia. <https://doi.org/10.25911/5d67b4b42d2b5>.
47. Cusumano CK, Hung CS, Chen SL, Hultgren SJ. 2010. Virulence plasmid harbored by uropathogenic *Escherichia coli* functions in acute stages of pathogenesis. *Infect Immun* 78:1457–1467. <https://doi.org/10.1128/IAI.01260-09>.
48. Stephens CM, Skerker JM, Sekhon MS, Arkin AP, Riley LW. 2015. Complete genome sequences of four *Escherichia coli* ST95 isolates from bloodstream infections. *Genome Announc* 3:e01241-15. <https://doi.org/10.1128/genomeA.01241-15>.
49. Gordon DM, Geyik S, Clermont O, O'Brien CL, Huang S, Abayasekara C, Rajesh A, Kennedy K, Collignon P, Pavli P, Rodriguez C, Johnston BD, Johnson JR, Decousser J-W, Denamur E. 2017. Fine-scale structure analysis shows epidemic patterns of clonal complex 95, a cosmopolitan *Escherichia coli* lineage responsible for extraintestinal infection. *mSphere* 2:e00168-17. <https://doi.org/10.1128/mSphere.00168-17>.
50. Denamur E, Clermont O, Bonacorsi S, Gordon D. 2021. The population genetics of pathogenic *Escherichia coli*. *Nat Rev Microbiol* 19:37–54. <https://doi.org/10.1038/s41579-020-0416-x>.
51. Adams-Sapper S, Diep BA, Perdreau-Remington F, Riley LW. 2013. Clonal composition and community clustering of drug-susceptible and -resistant *Escherichia coli* isolates from bloodstream infections. *Antimicrob Agents Chemother* 57:490–497. <https://doi.org/10.1128/AAC.01025-12>.
52. Wijetunge DSS, Karunathilake KHEM, Chaudhari A, Katani R, Dudley EG, Kapur V, DebRoy C, Kariyawasam S. 2014. Complete nucleotide sequence of pRS218, a large virulence plasmid, that augments pathogenic potential of meningitis-associated *Escherichia coli* strain RS218. *BMC Microbiol* 14:203. <https://doi.org/10.1186/s12866-014-0203-9>.
53. Mulvey MA, Schilling JD, Hultgren SJ. 2001. Establishment of a persistent *Escherichia coli* reservoir during the acute phase of a bladder infection. *Infect Immun* 69:4572–4579. <https://doi.org/10.1128/IAI.69.7.4572-4579.2001>.
54. DebRoy C, Sidhu MS, Sarker U, Jayarao BM, Stell AL, Bell NP, Johnson TJ. 2010. Complete sequence of pEC14\_114, a highly conserved IncFIB/FIIA plasmid associated with uropathogenic *Escherichia coli* cystitis strains. *Plasmid* 63:53–60. <https://doi.org/10.1016/j.plasmid.2009.10.003>.
55. Stromberg ZR, Johnson JR, Fairbrother JM, Kilbourne J, Van Goor A, Curtiss R, III, Mellata M. 2017. Evaluation of *Escherichia coli* isolates from healthy chickens to determine their potential risk to poultry and human health. *PLoS One* 12:e0180599. <https://doi.org/10.1371/journal.pone.0180599>.
56. Bar-On YM, Phillips R, Milo R. 2018. The biomass distribution on Earth. *Proc Natl Acad Sci U S A* 115:6506–6511. <https://doi.org/10.1073/pnas.1711842115>.
57. Lutful Kabir SM. 2010. Avian colibacillosis and salmonellosis: a closer look at epidemiology, pathogenesis, diagnosis, control and public health concerns. *Int J Environ Res Public Health* 7:89–114. <https://doi.org/10.3390/ijerph7010089>.
58. Mora A, Viso S, López C, Alonso MP, García-Garrote F, Dabhi G, Mamani R, Herrera A, Marzoa J, Blanco M, Blanco JE, Moulin-Schouleur M, Schouleur C, Blanco J. 2013. Poultry as reservoir for extraintestinal pathogenic *Escherichia coli* O45:K1:H7-B2-ST95 in humans. *Vet Microbiol* 167:506–512. <https://doi.org/10.1016/j.vetmic.2013.08.007>.
59. Evers EG, Pielat A, Smid JH, van Duijkeren E, Vennemann FBC, Wijnands LM, Chardon JE. 2017. Comparative exposure assessment of ESBL-producing *Escherichia coli* through meat consumption. *PLoS One* 12:e0169589. <https://doi.org/10.1371/journal.pone.0169589>.
60. Gorman R, Bloomfield S, Adley CC. 2002. A study of cross-contamination of food-borne pathogens in the domestic kitchen in the Republic of Ireland. *Int J Food Microbiol* 76:143–150. [https://doi.org/10.1016/s0168-1605\(02\)00028-4](https://doi.org/10.1016/s0168-1605(02)00028-4).
61. Moran RA, Holt KE, Hall RM. 2016. pCERC3 from a commensal ST95 *Escherichia coli*: a ColV virulence-multiresistance plasmid carrying a Sul3-associated class 1 integron. *Plasmid* 84–85:11–19. <https://doi.org/10.1016/j.plasmid.2016.02.002>.
62. Rouger A, Tresse O, Zagorec M. 2017. Bacterial contaminants of poultry meat: sources, species, and dynamics. *Microorganisms* 5:50. <https://doi.org/10.3390/microorganisms5030050>.
63. Food and Agriculture Organization of the United Nations. Trade and Markets Division. 2014. Food outlook: biannual report on global food markets, October 2014. Food and Agriculture Organization of the United Nations, Rome, Italy.
64. Kyakuwaire M, Olupot G, Amoding A, Nkedi KP, Ateanyi BT. 2019. How safe is chicken litter for land application as an organic fertilizer?: a review. *Int J Environ Res Public Health* 16:3521. <https://doi.org/10.3390/ijerph16193521>.
65. Manges AR, Smith SP, Lau BJ, Nuval CJ, Eisenberg JN, Dietrich PS, Riley LW. 2007. Retail meat consumption and the acquisition of antimicrobial resistant *Escherichia coli* causing urinary tract infections: a case control study. *Foodborne Pathog Dis* 4:419–431. <https://doi.org/10.1089/fpd.2007.0026>.
66. Mellata M, Ameiss K, Mo H, Curtiss R. 2010. Characterization of the contribution to virulence of three large plasmids of avian pathogenic *Escherichia coli*  $\gamma$ 7122 (O78:K80:H9). *Infect Immun* 78:1528–1541. <https://doi.org/10.1128/IAI.00981-09>.
67. Hicks SJ, Rowbury RJ. 1986. Virulence plasmid-associated adhesion of *Escherichia coli* and its significance for chlorine resistance. *J Appl Bacteriol* 61:209–218. <https://doi.org/10.1111/j.1365-2672.1986.tb04278.x>.
68. World Health Organization. 2009. Benefits and risks of the use of chlorine-containing disinfectants in food production and food processing: report of a joint FAO/WHO expert meeting, Ann Arbor, MI, USA, 27–30 May 2008. World Health Organization, Geneva, Switzerland.
69. Johnson TJ, Thorsness JL, Anderson CP, Lynne AM, Foley SL, Han J, Fricke WF, McDermott PF, White DG, Khatri M, Stell AL, Flores C, Singer RS. 2010. Horizontal gene transfer of a ColV plasmid has resulted in a dominant avian clonal type of *Salmonella enterica* serovar Kentucky. *PLoS One* 5:e15524. <https://doi.org/10.1371/journal.pone.0015524>.
70. Leimbach A, Hacker J, Dobrindt U. 2013. *E. coli* as an all-rounder: the thin line between commensalism and pathogenicity, p 3–32. *In Dobrindt U, Hacker JH, Svanborg C (ed), Between pathogenicity and commensalism*. Springer, Berlin, Germany.
71. Smith HW, Huggins MB. 1976. Further observations on the association of the colicine V plasmid of *Escherichia coli* with pathogenicity and with survival in the alimentary tract. *J Gen Microbiol* 92:335–350. <https://doi.org/10.1099/00221287-92-2-335>.
72. Flament-Simon S-C, de Toro M, Mora A, García V, García-Meniño I, Díaz-Jiménez D, Herrera A, Blanco J. 2020. Whole genome sequencing and

- characteristics of *mcr-1*-harboring plasmids of porcine *Escherichia coli* isolates belonging to the high-risk clone O25b:H4-ST131 clade B. *Front Microbiol* 11:387. <https://doi.org/10.3389/fmicb.2020.00387>.
73. Venturini C, Hassan KA, Chowdhury PR, Paulsen IT, Walker MJ, Djordjevic SP. 2013. Sequences of two related multiple antibiotic resistance virulence plasmids sharing a unique IS26-related molecular signature isolated from different *Escherichia coli* pathotypes from different hosts. *PLoS One* 8:e78862. <https://doi.org/10.1371/journal.pone.0078862>.
  74. Abraham S, Jordan D, Wong HS, Johnson JR, Toleman MA, Wakeham DL, Gordon DM, Turnidge JD, Mollinger JL, Gibson JS, Trott DJ. 2015. First detection of extended-spectrum cephalosporin-and fluoroquinolone-resistant *Escherichia coli* in Australian food-producing animals. *J Glob Antimicrob Resist* 3:273–277. <https://doi.org/10.1016/j.jgar.2015.08.002>.
  75. Nesporova K, Wyrsh ER, Valcek A, Bitar J, Chaw K, Harris P, Hrabak J, Literak I, Djordjevic SP, Dolejska M. 2020. *Escherichia coli* sequence type 457 is an emerging extended-spectrum- $\beta$ -lactam-resistant lineage with reservoirs in wildlife and food-producing animals. *Antimicrob Agents Chemother* 65:e01118-20. <https://doi.org/10.1128/AAC.01118-20>.
  76. Maciucă IE, Cummins ML, Cozma AP, Rimbu CM, Guguianu E, Panzaru C, Licker M, Szekely E, Flonta M, Djordjevic SP, Timofte D. 2019. Genetic features of *mcr-1* mediated colistin resistance in CMY-2-producing *Escherichia coli* from Romanian poultry. *Front Microbiol* 10:2267. <https://doi.org/10.3389/fmicb.2019.02267>.
  77. Lima Barbieri N, Nielsen DW, Wannemuehler Y, Cavender T, Hussein A, Yan SG, Nolan LK, Logue CM. 2017. *mcr-1* identified in avian pathogenic *Escherichia coli* (APEC). *PLoS One* 12:e0172997. <https://doi.org/10.1371/journal.pone.0172997>.
  78. Harmer CJ, Hall RM. 2016. IS26-mediated formation of transposons carrying antibiotic resistance genes. *mSphere* 1:e00038-16. <https://doi.org/10.1128/mSphere.00038-16>.
  79. Cummins ML, Sanderson-Smith M, Newton P, Carlile N, Phalen DN, Maute K, Monahan LG, Hoye BJ, Djordjevic SP. 2020. Whole-genome sequence analysis of an extensively drug-resistant *Salmonella enterica* serovar Agona isolate from an Australian silver gull (*Chroicocephalus novaehollandiae*) reveals the acquisition of multidrug resistance plasmids. *mSphere* 5:e00743-20. <https://doi.org/10.1128/mSphere.00743-20>.
  80. Mangat CS, Bekal S, Irwin RJ, Mulvey MR. 2017. A novel hybrid plasmid carrying multiple antimicrobial resistance and virulence genes in *Salmonella enterica* serovar Dublin. *Antimicrob Agents Chemother* 61:e02601-16. <https://doi.org/10.1128/AAC.02601-16>.
  81. Du P, Liu D, Song H, Zhang P, Li R, Fu Y, Liu X, Jia J, Li X, Fanning S, Wang Y, Bai L, Zeng H. 2020. Novel IS26-mediated hybrid plasmid harbouring tet(X4) in *Escherichia coli*. *J Glob Antimicrob Resist* 21:162–168. <https://doi.org/10.1016/j.jgar.2020.03.018>.
  82. Johnson TJ, Danzeisen JL, Youmans B, Case K, Llop K, Munoz-Aguayo J, Flores-Figueroa C, Aziz M, Stoesser N, Sokurenko E, Price LB, Johnson JR. 2016. Separate F-type plasmids have shaped the evolution of the H30 subclone of *Escherichia coli* sequence type 131. *mSphere* 1:e00121-16. <https://doi.org/10.1128/mSphere.00121-16>.
  83. Chen SL, Hung C-S, Xu J, Reigstad CS, Magrini V, Sabo A, Blasiar D, Bieri T, Meyer RR, Ozersky P, Armstrong JR, Fulton RS, Latreille JP, Spieth J, Hooton TM, Mardis ER, Hultgren SJ, Gordon JI. 2006. Identification of genes subject to positive selection in uropathogenic strains of *Escherichia coli*: a comparative genomics approach. *Proc Natl Acad Sci U S A* 103:5977–5982. <https://doi.org/10.1073/pnas.0600938103>.
  84. Manges AR. 2016. *Escherichia coli* and urinary tract infections: the role of poultry-meat. *Clin Microbiol Infect* 22:122–129. <https://doi.org/10.1016/j.cmi.2015.11.010>.
  85. Zhou Z, Alikhan N-F, Mohamed K, Fan Y, Achtman M, Brown D, Chattaway M, Dallman T, Delahay R, Kornschober C, Agama Study Group. 2020. The Enterobase user's guide, with case studies on *Salmonella* transmissions, *Yersinia pestis* phylogeny, and *Escherichia coli* core genomic diversity. *Genome Res* 30:138–152. <https://doi.org/10.1101/gr.251678.119>.
  86. Zhou Z, Alikhan N-F, Mohamed K, Fan Y, Achtman M, the Agama Study Group. 2019. The user's guide to comparative genomics with Enterobase, including case studies on transmissions of micro-clades of *Salmonella*, the phylogeny of ancient and modern *Yersinia pestis* genomes, and the core genomic diversity of all *Escherichia coli*. *bioRxiv* 613554. <https://doi.org/10.1101/613554>.
  87. Tanizawa Y, Fujisawa T, Nakamura Y. 2018. DFAST: a flexible prokaryotic genome annotation pipeline for faster genome publication. *Bioinformatics* 34:1037–1039. <https://doi.org/10.1093/bioinformatics/btx713>.
  88. Page AJ, Cummins CA, Hunt M, Wong VK, Reuter S, Holden MT, Fookes M, Falush D, Keane JA, Parkhill J. 2015. Roary: rapid large-scale prokaryote pan genome analysis. *Bioinformatics* 31:3691–3693. <https://doi.org/10.1093/bioinformatics/btv421>.
  89. Page AJ, Taylor B, Delaney AJ, Soares J, Seemann T, Keane JA, Harris SR. 2016. *SNP-sites*: rapid efficient extraction of SNPs from multi-FASTA alignments. *Microb Genom* 2:e000056. <https://doi.org/10.1099/mgen.0.000056>.
  90. Trifinopoulos J, Nguyen L-T, von Haeseler A, Minh BQ. 2016. W-IQ-TREE: a fast online phylogenetic tool for maximum likelihood analysis. *Nucleic Acids Res* 44:W232–W235. <https://doi.org/10.1093/nar/gkw256>.
  91. Kalyaanamoorthy S, Minh BQ, Wong TK, von Haeseler A, Jermini LS. 2017. ModelFinder: fast model selection for accurate phylogenetic estimates. *Nat Methods* 14:587–589. <https://doi.org/10.1038/nmeth.4285>.
  92. Hoang DT, Chernomor O, von Haeseler A, Minh BQ, Vinh LS. 2018. UFBoot2: improving the ultrafast bootstrap approximation. *Mol Biol Evol* 35:518–522. <https://doi.org/10.1093/molbev/msx281>.
  93. Tonkin-Hill G, Lees JA, Bentley SD, Frost SDW, Corander J. 2019. Fast hierarchical Bayesian analysis of population structure. *Nucleic Acids Res* 47:5539–5549. <https://doi.org/10.1093/nar/gkz361>.
  94. R Core Team. 2013. R: a language and environment for statistical computing. The R Foundation, Vienna, Austria.
  95. Yu G, Smith DK, Zhu H, Guan Y, Lam TT-Y. 2017. *ggTree*: an R package for visualization and annotation of phylogenetic trees with their covariates and other associated data. *Methods Ecol Evol* 8:28–36. <https://doi.org/10.1111/2041-210X.12628>.
  96. Wickham H, Francois R, Henry L, Müller K. 2015. *dplyr*: a grammar of data manipulation. R package version 04.3.
  97. Bache SM, Wickham H. 2014. *magrittr*: a forward-pipe operator for R. R package version 1.
  98. Wickham H. 2016. *ggplot2*: elegant graphics for data analysis. Springer, Basingstoke, United Kingdom.
  99. Wickham H, Hester J, Francois R. 2017. *readr*: read rectangular text data. R package version 1.1.
  100. Wickham H. 2012. *reshape2*: Flexibly reshape data: a reboot of the reshape package. R package version 1.
  101. Yu G. 2019. A tidy tool for phylogenetic tree data manipulation [R package tidytree version 0.1.9]. Comprehensive R Archive Network.
  102. Yu G. 2017. *Ggimage*: use Image in 'Ggplot2.'
  103. Zankari E, Allesøe R, Joensen KG, Cavaco LM, Lund O, Aarestrup FM. 2017. PointFinder: a novel web tool for WGS-based detection of antimicrobial resistance associated with chromosomal point mutations in bacterial pathogens. *J Antimicrob Chemother* 72:2764–2768. <https://doi.org/10.1093/jac/dkx217>.
  104. Alcock BP, Raphenya AR, Lau TTY, Tsang KK, Bouchard M, Edalatmand A, Huynh N, Nguyen A-LV, Cheng AA, Liu S, Min SY, Miroshnichenko A, Tran H-K, Werfalli RE, Nasir JA, Oloni M, Speicher DJ, Florescu A, Singh B, Faltyn M, Hernandez-Koutoucheva A, Sharma AN, Bordeleau E, Pawlowski AC, Zubyk HL, Dooley D, Griffiths E, Maguire F, Winsor GL, Beiko RG, Brinkman FSL, Hsiao WWL, Domselaar GV, McArthur AG. 2020. CARD 2020: antibiotic resistance surveillance with the comprehensive antibiotic resistance database. *Nucleic Acids Res* 48:D517–D525. <https://doi.org/10.1093/nar/gkz935>.
  105. Chen L, Yang J, Yu J, Yao Z, Sun L, Shen Y, Jin Q. 2005. VFDB: a reference database for bacterial virulence factors. *Nucleic Acids Res* 33:D325–D328. <https://doi.org/10.1093/nar/gki008>.
  106. Siguier P, Pérochon J, Lestrade L, Mahillon J, Chandler M. 2006. ISfinder: the reference centre for bacterial insertion sequences. *Nucleic Acids Res* 34:D32–D36. <https://doi.org/10.1093/nar/gkj014>.
  107. Carattoli A, Zankari E, García-Fernández A, Larsen MV, Lund O, Villa L, Aarestrup FM, Hasman H. 2014. In silico detection and typing of plasmids using PlasmidFinder and plasmid multilocus sequence typing. *Antimicrob Agents Chemother* 58:3895–3903. <https://doi.org/10.1128/AAC.02412-14>.
  108. World Health Organization. 2019. Critically important antimicrobials for human medicine. World Health Organization, Geneva, Switzerland.
  109. Carattoli A, Hasman H. 2020. PlasmidFinder and in silico pMLST: identification and typing of plasmid replicons in whole-genome sequencing (WGS). *Methods Mol Biol* 2075:285–294. [https://doi.org/10.1007/978-1-4939-9877-7\\_20](https://doi.org/10.1007/978-1-4939-9877-7_20).





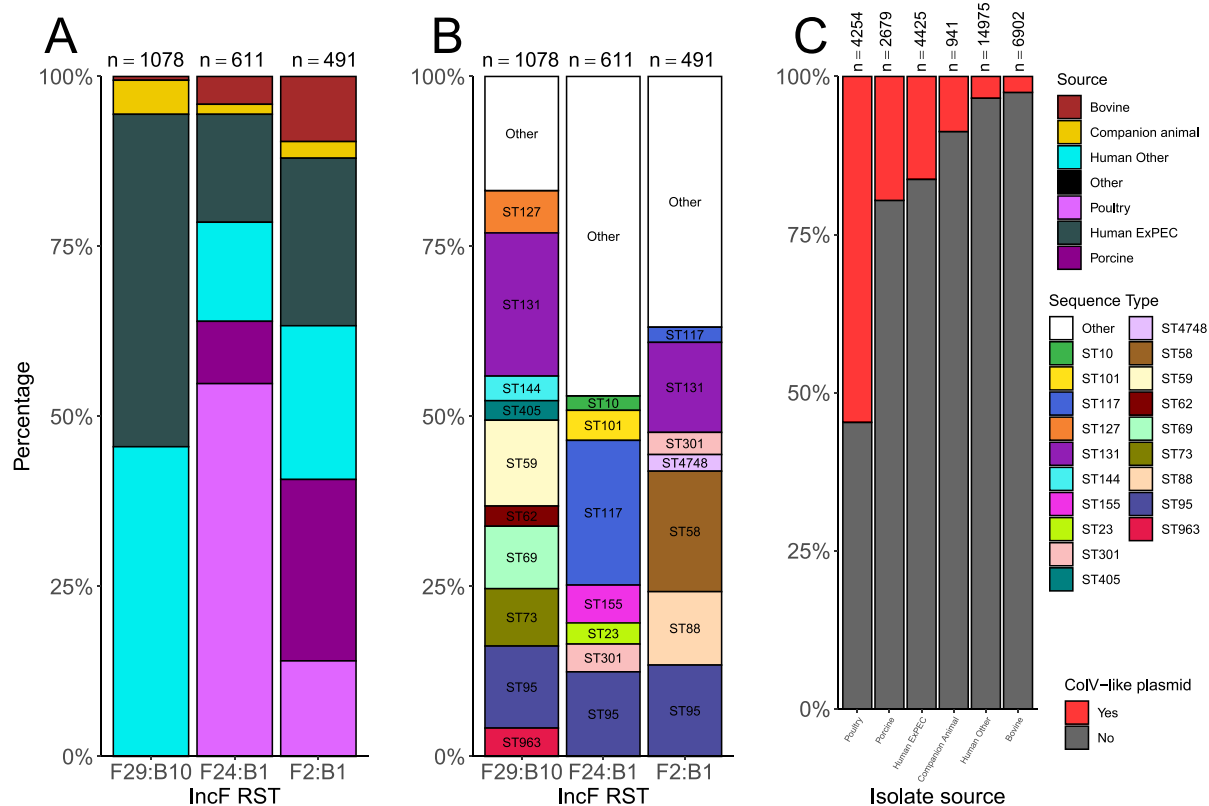
# Erratum for Cummins et al., “F Plasmid Lineages in *Escherichia coli* ST95: Implications for Host Range, Antibiotic Resistance, and Zoonoses”

Max Laurence Cummins,<sup>a,b</sup> Cameron J. Reid,<sup>a,b</sup> Steven Philip Djordjevic<sup>a,b</sup>

<sup>a</sup>The iThree Institute, University of Technology Sydney, Ultimo, NSW, Australia

<sup>b</sup>Australian Centre for Genomic Epidemiological Microbiology, University of Technology Sydney, Ultimo, NSW, Australia

Volume 7, no. 1, e01212-21, 2022, <https://doi.org/10.1128/msystems.01212-21>. In Fig. 5, the color legend labeled “Source” should read, from top to bottom, “Bovine,” “Companion Animal,” “Human Other,” “Other,” “Poultry,” “Human ExPEC,” and “Porcine.” The corrected figure is shown below.



Copyright © 2022 Cummins et al. This is an open-access article distributed under the terms of the [Creative Commons Attribution 4.0 International license](https://creativecommons.org/licenses/by/4.0/).

Address correspondence to Steven Philip Djordjevic, [steven.djordjevic@uts.edu.au](mailto:steven.djordjevic@uts.edu.au). The authors declare no conflict of interest.