

COVID-19

Learning from the pandemic: mortality trends and seasonality of deaths in Australia in 2020

Gabriel Gregory,¹ Lin Zhu,¹ Andrew Hayen² and Katy JL Bell  ^{1*}

¹School of Public Health, University of Sydney, Sydney, NSW, Australia and ²School of Public Health, University of Technology Sydney, Sydney, NSW, Australia

*Corresponding author. School of Public Health, Edward Ford Building (A27), University of Sydney, Sydney, NSW 2006, Australia. E-mail: katy.bell@sydney.edu.au

Received 21 August 2021; Editorial decision 20 January 2022; Accepted 9 February 2022

Abstract

Aim: To assess whether the observed numbers and seasonality of deaths in Australia during 2020 differed from expected trends based on 2015–19 data.

Methods: We used provisional death data from the Australian Bureau of Statistics, stratified by state, age, sex and cause of death. We compared 2020 deaths with 2015–19 deaths using interrupted time series adjusted for time trend and seasonality. We measured the following outcomes along with 95% confidence intervals: observed/expected deaths (rate ratio: RR), change in seasonal variation in mortality (amplitude ratio: AR) and change in week of peak seasonal mortality (phase difference: PD).

Results: Overall 4% fewer deaths from all causes were registered in Australia than expected in 2020 [RR 0.96 (0.95–0.98)] with reductions across states, ages and sex strata. There were fewer deaths from respiratory illness [RR 0.79 (0.76–0.83)] and dementia [RR 0.95 (0.93–0.98)] but more from diabetes [RR 1.08 (1.04–1.13)]. Seasonal variation was reduced for deaths overall [AR 0.94 (0.92–0.95)], and for deaths due to respiratory illnesses [AR 0.78 (0.74–0.83)], dementia [AR 0.92 (0.89–0.95)] and ischaemic heart disease [0.95 (0.90–0.97)].

Conclusions: The observed reductions in respiratory and dementia deaths and the reduced seasonality in ischaemic heart disease deaths may reflect reductions in circulating respiratory (non-SARS-CoV-2) pathogens resulting from the public health measures taken in 2020. The observed increase in diabetes deaths is unexplained and merits further study.

Key words: Australia/epidemiology, pandemics, SARS-CoV-2, COVID-19/epidemiology, cause of death/trends, mortality*/trends, interrupted time series

Introduction

There were increased deaths in 2020 associated with the COVID-19 pandemic in many countries, including Germany, France, Italy, Switzerland, Portugal, Sweden,

Russia, Brazil, Peru, Israel, Japan, the UK, the USA and Europe as a whole.^{1,2} Much of the excess mortality was directly attributed to COVID-19,³ with a further portion attributed to undiagnosed COVID-19.^{4,5} For non-COVID

Key Messages

- We undertook an interrupted time series analysis of the number and seasonality of deaths in Australia during 2020 compared with 2015–19.
- We found 4% fewer deaths from all causes during 2020 in Australia than expected, driven by reductions in respiratory and dementia deaths in older age groups.
- There was also reduced seasonality in ischaemic heart disease deaths, and no changes in cerebrovascular or cancer deaths. More Australians died from diabetes than expected in 2020.
- Public health measures adopted in 2020 were associated with incidental mortality reductions in a number of non-COVID diseases. Retaining some of the adopted behavioural changes in the post-pandemic era merits careful consideration.

disease-specific deaths, both increases and decreases were observed. For example in the USA there were increases in deaths from cardiovascular disease, Alzheimer's disease and pneumonia (a proportion of which may have had undiagnosed COVID-19), and decreases in deaths from chronic lower respiratory disease.⁶ In Northern Italy during the first 6 months of the pandemic, there were increased deaths from cardiovascular disease and diabetes and decreased deaths from cancer,⁷ and the UK reported increases in deaths from cardiovascular disease and stroke during the earlier months of 2020.⁸ Drug overdose deaths increased in the USA in 2020⁶ with some evidence of peaks associated with the announcement of a public health emergency and rises in unemployment,⁹ whereas data from 21 countries found no change or in some instances declines in the observed number of suicides in 2020.¹⁰

In contrast to the above, mortality rates have tended not to increase in countries where there was successful suppression (and often temporary elimination) of SARS-CoV-2 infection. For example, New Zealand¹¹ and Denmark¹² both observed decreases in overall mortality for the year. A large Bayesian analysis of mortality rates in 21 industrialized countries, through to May 2020, identified six countries with a likely overall decline in total mortality including Australia, New Zealand and four European countries.¹³ In New Zealand it was hypothesized that the reduction was due to the absence of an influenza epidemic,¹¹ which may also have occurred in Australia.¹⁴ However, the pandemic and associated restrictions may have affected total mortality in a more complex way,^{15–17} with possible changes in the number of deaths due to causes other than directly attributable to influenza. Australia's pandemic response resulted in a much lower COVID-19 and excess death rate in 2020 compared with many other countries,¹⁸ and access to health care was relatively preserved during the year.

The overall objective of this study was to assess the potential impacts of the Australian pandemic response on

non-COVID-19 disease mortality. Our primary aim was to compare the expected with the observed number of deaths in Australia in 2020 using available provisional mortality data, stratified by cause of death as well as by state, age and sex. Our secondary aim was to explore a hypothesis that in addition to a change in the total number of deaths, the timing of deaths throughout the year ('seasonality') may have changed. Assessment of the seasonal pattern may allow detection of more subtle changes in mortality during 2020. The nature of some seasonality measures as ratios (see Methods below) means that these outcomes are less confounded by the possibility of incomplete reporting of deaths in 2020. Moreover, changes in seasonal pattern can provide some evidence that any observed reductions are related to a reduction in factors that drive the seasonality of disease, such as reductions in circulating respiratory viruses.

Methods**Data inputs**

Data for this study were sourced from a publicly available dataset maintained by the Australian Bureau of Statistics (ABS).¹⁹ Mortality data were available stratified by age and sex, or by state, or by cause, but not by combinations of these. At the time the study was conducted, provisional data were available for the number of doctor-certified deaths each week in Australia until December 2020 (data used were those released by ABS on 24 November 2021). The data are considered provisional in that reported numbers and causes of death remain subject to change as additional data are received. A death is considered doctor-certified when a Medical Certificate of Cause of Death has been written by a medical practitioner. In Australia, all deaths are doctor-certified except when they occur in circumstances requiring referral to the coroner. Deaths due to unknown or external causes (e.g. accidents, suicides, assaults) are generally referred (~10–15% of deaths), although precise criteria vary between states.

The Australian Medical Certificate of Cause of Death is based on that recommended by the World Health Organization (WHO) for international use.²⁰ This asks the medical practitioner to record the sequence of events leading to death, with the proximate cause at the top (e.g. Acute Respiratory Distress Syndrome), and each antecedent causes listed below (e.g. pneumonia), with the underlying cause listed at the bottom (e.g. COVID-19).²¹ After registration of the death, the information is passed on to the ABS where staff code the causes of death, according to the WHO's International Statistical Classification of Diseases and Related Health Problems-10th Revision (ICD-10).²⁰ The underlying cause of death is used for cause-specific mortality data.

Data were available as weekly totals of deaths, grouped by the date on which the death occurred. Week 1 of a given year begins on 1 January, and each of Weeks 1-52 contain 7 days. Week 53 contains 1 day (31 December) or 2 days during leap years. Published causes of death were grouped according to the International Classification of Diseases (ICD-10) and are limited to: COVID-19 (U07), ischaemic heart disease (I20-25), cerebrovascular disease (I60-69), respiratory disease (J00-J99), chronic lower respiratory disease (J40-47), influenza (J09-J11), pneumonia (J12-18), cancer (C00-C97, D45, D46, D47.1 or D47.3-D47.5), diabetes (E10-14), dementia (F01, F03 or G30).

Data analysis

We assessed for changes in mortality in 2020 in each of the above categories (demographic group, state, cause of death) using interrupted time series²² adjusted to account for time trends and seasonality. Given the over-dispersed weekly death count data, models were fitted by quasi-Poisson regression.²³ Time was modelled as a linear predictor and seasonality was accounted for with harmonic terms (pairs of sine and cosines). The interruption was modelled by including an indicator variable for 2020 ('the effect of 2020') and allowing this variable to interact with the linear predictor. The general formula for the starting model including all terms was: weekly death \sim time trend + seasonal trend + Covid indicator + interaction term (seasonal trend \times Covid indicator). Separate models were fitted for each state and territory, sex and age strata and cause of death. Interaction terms were included in models where their *P*-value was <0.05 . We verified the chosen models by checking the autocorrelation and partial autocorrelation of residuals. Analyses were performed in R 3.6.3.²⁴

Outcome measures

Change in mortality in 2020 was assessed by the ratio of observed deaths to expected deaths. The observed number

of deaths refers to the total number of doctor-certified deaths that took place in Weeks 1-52 of 2020. To calculate the expected (counterfactual) number of deaths, we forecast the number of deaths in 2020 using the selected model but with the effect of 2020 set to zero. We calculated the ratio of observed to expected deaths and produced confidence intervals using 95% confidence limits of our counterfactual projections.

Changes to seasonality in 2020 were primarily assessed by changes in the extent of seasonal variation [we also examined the timing of the seasonal peak 'phase' and 'phase difference' (PD), see [Supplementary Material](#), available as [Supplementary data](#) at *IJE* online, for more details]. The amplitude was defined to be the maximum contribution of the seasonal terms, expressed as a rate ratio.²⁵ For example, an amplitude of 1.20 indicates 20% more deaths in the week of peak mortality than if there were no seasonal pattern to the deaths. Finally, an amplitude ratio (AR) was calculated by dividing the amplitude fitted for 2020 by the amplitude fitted for 2015-19. These outcome measures were produced via transformations of the regression coefficients for the harmonic terms of the fitted model and approximate 95% confidence intervals were produced using the delta method.²⁶

Results

Overall mortality

In Weeks 1 to 52 of 2020, there were proportionately 4% fewer doctor-reported deaths than projected (RR 0.96, 95% CI 0.95, 0.98; [Figure 1](#), [Table 1](#)). The seasonal amplitude was reduced from 1.10 during 2015-19 to 1.03 in 2020 (amplitude ratio 0.94; 95% CI 0.92, 0.95). The week of peak modelled mortality occurred 5 weeks earlier than in 2015-19 (95% CI 1, 8 weeks, [Supplementary Appendix Table 3](#), available as [Supplementary data](#) at *IJE* online).

Fewer than expected (all-cause) deaths were recorded in all states and territories ([Table 1](#)), with the greatest proportional and absolute reduction occurring in Queensland (RR 0.95, 95% CI 0.93, 0.97). These reductions were all associated with reductions in seasonal amplitude (ARs between 0.93 and 0.98) in the states but not the territories (Northern Territory and Australian Capital Territories; AR 1.0). The larger reduction in Queensland arises from a temporal trend for increasing number of deaths across 2015-19 which resulted in a higher expected number of deaths for 2020 ([Supplementary Appendix Figure 1](#), available as [Supplementary data](#) at *IJE* online).

A consistent pattern of fewer than expected deaths (all-causes) was observed in all strata of age and sex ([Table 2](#);

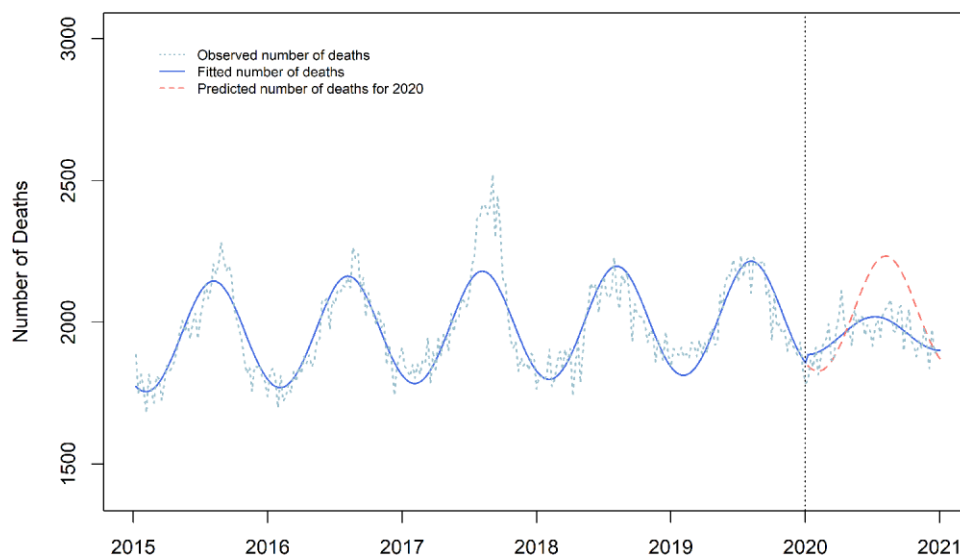


Figure 1 Expected vs observed all-cause mortality (doctor-certified deaths) in Australia 2015–20. This graph compares the observed number of doctor-certified deaths each week in Australia from 2015–20 (blue dashed line) with the number of deaths fitted by the optimal generalized linear model (blue solid line). In 2020, the counterfactual prediction of the fitted model is additionally presented (red dashed line). Note the significant reduction in the amplitude between the two fitted curves, demonstrating the observed reduction in seasonality in 2020

Table 1 Certified deaths in each Australian state and territory and in Australia overall from 1 January 2020 to 29 December 2020

| State | Expected deaths | Observed deaths | Absolute reductions | Ratio (95% CI) | Amplitude (2015-19) | Amplitude (2020) | Ratio (95% CI) |
|--------------------------|-----------------|-----------------|---------------------|-------------------|---------------------|------------------|------------------------|
| NSW | 48 829 | 47 931 | 898 | 0.98 (0.96, 1.00) | 1.13 | 1.05 | 0.93 (0.91, 0.95) |
| Victoria | 34 599 | 34 230 | 369 | 0.99 (0.97, 1.00) | 1.10 | 1.07 | 0.98 (0.96, 1.00) |
| Queensland | 30 736 | 29 306 | 1430 | 0.95 (0.93, 0.97) | 1.08 | 1.03 | 0.93 (0.92, 0.97) |
| South Australia | 11 275 | 11 106 | 169 | 0.98 (0.96, 1.01) | 1.10 | 1.04 | 0.93 (0.90, 0.97) |
| Western Australia | 12 496 | 12 267 | 229 | 0.98 (0.96, 1.00) | 1.09 | 1.04 | 0.95 (0.92, 0.98) |
| Tasmania | 3803 | 3700 | 103 | 0.97 (0.93, 1.01) | 1.12 | 1.06 | 0.94 (0.90, 0.99) |
| Northern Territory + ACT | 2925 | 2906 | 19 | 0.99 (0.95, 1.04) | 1.09 | 1.05 | 1.0 (NA ^a) |
| Australia | 105 463 | 101 708 | 3755 | 0.96 (0.95, 0.98) | 1.10 | 1.03 | 0.94 (0.92, 0.95) |

NSW, New South Wales; ACT, Australian Capital Territories; NA, not available.

^aFitted model contained no seasonal interaction.

RRs between 0.94 and 1.00). These reductions were accompanied by reductions in seasonal amplitude in males aged over 64 years and in females aged over 44 years, with the reduction in seasonal amplitude being greater in each successively older age bracket for females. No change in seasonal amplitude was detected in males aged 0-64 or in females aged 0-44.

Cause-specific mortality

There were fewer reported deaths than expected for total respiratory deaths (RR 0.79, 95% CI 0.76, 0.83), including deaths from influenza and pneumonia (RR 0.56, 95% CI 0.51, 0.61), pneumonia (RR 0.73, 95% CI 0.69, 0.77) and chronic respiratory disease (RR 0.87, 95% CI 0.84, 0.90) (Figure 2, Table 3). There were also fewer deaths than expected for dementia (RR 0.95, 95% CI 0.93, 0.98).

These reductions were accompanied by reductions in seasonal amplitude (ARs 0.78- 0.92). Although there was no evidence of a reduction in number of deaths from ischaemic heart disease (RR 1.00, 95% CI 0.97, 1.02), we did observe a reduction in seasonal amplitude (AR 0.95, 95% CI 0.92, 0.97). There were no changes in number or seasonality of deaths from cancer or cerebrovascular disease (RR 1.00, AR 1.00 for both). Finally, the number of deaths from diabetes was greater than expected (RR 1.08, 95% CI 1.04, 1.13) with no evidence of a change in amplitude (AR 1.00) or phase (PD -3, 95% CI -8, 1).

Discussion

We found that 4% fewer deaths than expected were medically registered in Australia in 2020, with consistent

Table 2 Certified deaths by age and sex in Australia from 1 January 2020 to 29 December 2020

| Sex | Age | Expected deaths ^a | Observed deaths ^a | Absolute reductions | Ratio (95% CI) | Amplitude (2015-19) | Amplitude (2020) | Ratio (95% CI) |
|--------|-------|------------------------------|------------------------------|---------------------|-------------------|---------------------|------------------|------------------------|
| Male | 0-44 | 1569 | 1474 | 95 | 0.94 (0.88, 1.00) | 1.02 | 1.02 | 1.0 (NA ^b) |
| | 45-64 | 8683 | 8614 | 69 | 0.99 (0.97, 1.02) | 1.04 | 1.04 | 1.0 (NA ^b) |
| | 65-74 | 14020 | 13737 | 283 | 0.98 (0.96, 1.00) | 1.07 | 1.03 | 0.94 (0.96, 0.99) |
| | 75-84 | 21930 | 21793 | 137 | 0.99 (0.98, 1.01) | 1.10 | 1.04 | 0.95 (0.93, 0.97) |
| | 85+ | 26623 | 25725 | 898 | 0.97 (0.95, 0.99) | 1.15 | 1.09 | 0.94 (0.92, 0.97) |
| Female | 0-44 | 1349 | 1295 | 54 | 0.96 (0.90, 1.02) | 1.04 | 1.04 | 1.0 (NA ^b) |
| | 45-64 | 6413 | 6357 | 56 | 0.99 (0.96, 1.02) | 1.04 | 1.02 | 0.98 (0.95, 1.02) |
| | 65-74 | 9553 | 9247 | 306 | 0.97 (0.94, 0.99) | 1.06 | 1.03 | 0.97 (0.94, 1.00) |
| | 75-84 | 17215 | 17206 | 9 | 1.00 (0.98, 1.02) | 1.10 | 1.04 | 0.94 (0.92, 0.97) |
| | 85+ | 37299 | 35995 | 1304 | 0.97 (0.95, 0.98) | 1.14 | 1.06 | 0.92 (0.90, 0.94) |

NA, not available.

^aThrough to 29 December 2020.

^bFitted model contained no seasonal interaction.

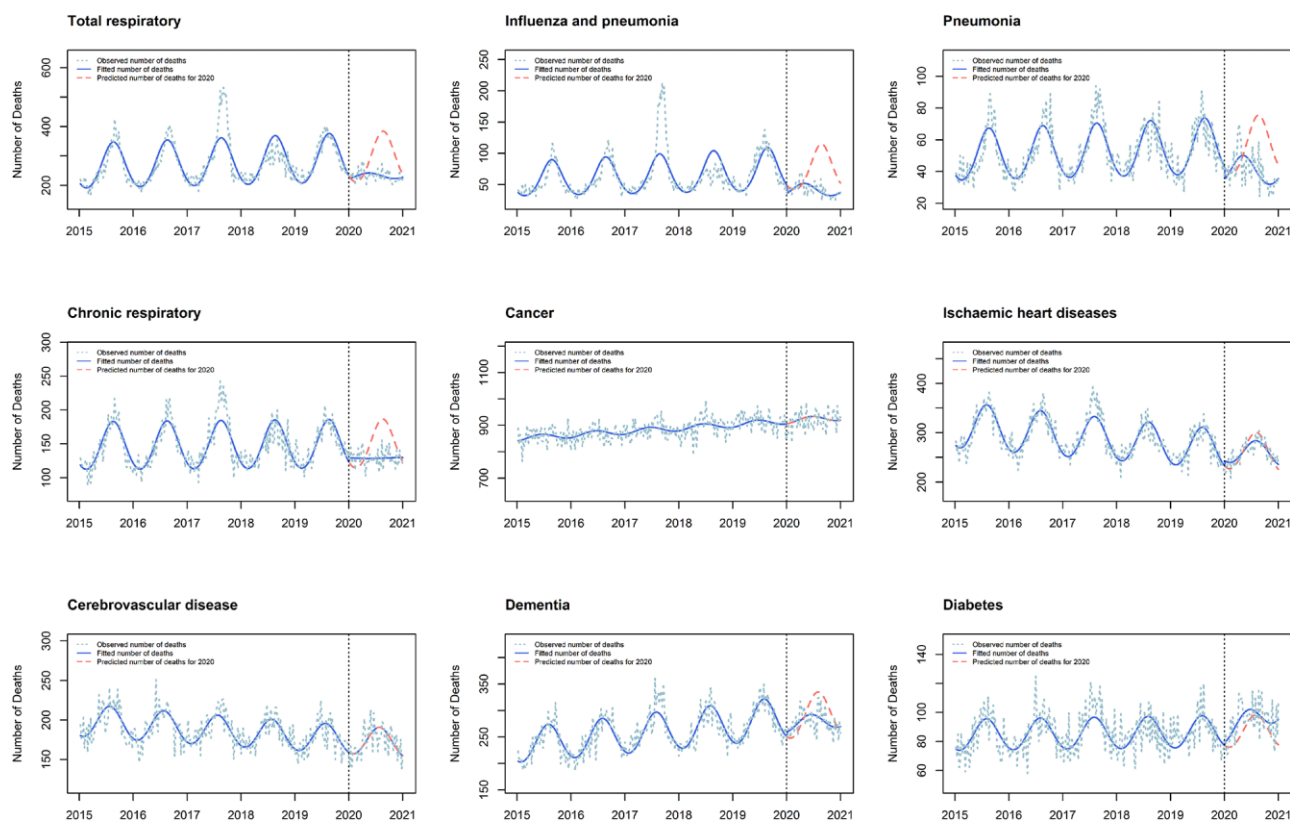


Figure 2 Expected vs observed mortality by cause of death Australia 2015–20. This graph compares the observed number of doctor-certified deaths each week in Australia from 2015–20 (blue dashed line) with the number of deaths fitted by the optimal generalized linear model (blue solid line) for nine causes of death (total respiratory, influenza and pneumonia, pneumonia, chronic respiratory, cancer, ischaemic heart disease, cerebrovascular disease, dementia, diabetes). In 2020, the counterfactual prediction of the fitted model is additionally presented (red dashed line). Note the significant reduction in the amplitude between the two fitted curves, demonstrating the observed reduction in seasonality in 2020

reductions across state, age and sex strata. There was also consistent decreased seasonal variation in overall mortality (from certified causes) across states and territories, with more pronounced reductions in older age brackets. We found strong evidence of reduced mortality (number and

seasonality) from respiratory illness and dementia, and some evidence of reduced mortality (seasonality only) from ischaemic heart disease. There was no evidence of a change in mortality from cerebrovascular disease or cancer, and strong evidence of increased deaths from diabetes.

Table 3 Certified deaths by cause of death in Australia from 1 January 2020 to 29 December 2020

| Cause | Expected deaths ^a | Observed deaths ^a | Absolute reductions | Ratio (95% CI) | Amplitude (2015-19) | Amplitude (2020) | Ratio (95% CI) |
|-------------------------|------------------------------|------------------------------|---------------------|-------------------|---------------------|------------------|------------------------|
| Total respiratory | 15 207 | 12 055 | 3152 | 0.79 (0.76, 0.83) | 1.29 | 1.05 | 0.78 (0.74, 0.83) |
| Influenza and pneumonia | 3848 | 2122 | 1698 | 0.56 (0.51, 0.61) | 1.50 | 1.25 | 0.78 (0.68, 0.91) |
| Pneumonia | 2903 | 2105 | 798 | 0.73 (0.69, 0.77) | 1.33 | 1.23 | 0.91 (0.84, 0.98) |
| Chronic respiratory | 7726 | 6704 | 1022 | 0.87 (0.84, 0.90) | 1.24 | 1.00 | 0.79 (0.75, 0.83) |
| Cancer | 48 219 | 47 800 | 419 | 0.99 (0.98, 1.00) | 1.01 | 1.00 | 1.0 (NA ^b) |
| Ischaemic heart disease | 13 577 | 13 513 | 64 | 1.00 (0.97, 1.02) | 1.15 | 1.09 | 0.95 (0.92, 0.97) |
| Cerebrovascular disease | 8992 | 8971 | 21 | 1.00 (0.97, 1.02) | 1.11 | 1.09 | 1.0 (NA ^b) |
| Dementia | 15 172 | 14 463 | 709 | 0.95 (0.93, 0.98) | 1.14 | 1.05 | 0.92 (0.89, 0.95) |
| Diabetes | 4523 | 4906 | -383 | 1.08 (1.04, 1.13) | 1.12 | 1.12 | 1.0 (NA ^b) |
| All causes ^c | 105 463 | 101 708 | 3755 | 0.96 (0.95, 0.98) | 1.10 | 1.03 | 0.94 (0.92, 0.95) |

NA, not available.

^aThrough to 29 December 2020.

^bFitted model contained no seasonal interaction.

^cInfluenza and pneumonia, Pneumonia and Chronic Respiratory are included in Total Respiratory counts. All causes also include COVID-19 deaths.

Three other studies have reported on the number of deaths in Australia in 2020. The Australian Bureau of Statistics (ABS) released a report that estimated excess mortality through to August 2020, using a cyclical linear regression model with robust estimators.²⁷ The Australian Actuaries Institute published a report that estimated excess mortality to December 2020, using analysis methods that allowed for later reported deaths and changes in the size and age structure of the Australian population.²⁸ Most recently, an analysis of change in life expectancy in Australia in 2020 using a life-table method was published.²⁹ Our study's findings agree with those of the other reports, and it adds value by presenting potential impacts of the Australian pandemic response on both total and seasonal components of changes in mortality in 2020.

The overall reduction in total certified deaths is consistent with prior reports of reduced mortality in Australia¹³ and adds to evidence from New Zealand¹¹ and Scandinavia^{30,31} suggesting that some societal changes may have saved lives from non-COVID causes beyond controlling the pandemic. The reduction in respiratory deaths is consistent with known reductions in influenza admissions in Australia¹⁴ and internationally noted reductions in deaths from chronic respiratory disease⁶ and asthma exacerbations.³² The reduction in seasonality in ischaemic heart disease deaths is also in keeping with the established causative role of influenza.³³ Our findings further suggest substantial mortality benefits from reductions in other circulating respiratory pathogens, coincidentally reduced by the pandemic control measures. The full extent of the health benefits from these non-pharmaceutical interventions in preventing both respiratory and ischaemic heart disease deaths may have been underappreciated before the pandemic.

The observed reduction in total deaths due to dementia in Australia contrasts with international findings,^{6,34} where increased dementia deaths were found in regions overwhelmed by COVID-19,³⁵ with many occurring outside hospital.³⁶ Deaths in those countries may have been due to undiagnosed coronavirus infections,³⁷ with dementia recorded as the underlying cause and an unknown respiratory pathogen as the proximate cause. Similarly in Australia, many deaths of the people with known dementia in 2015–19 may have had dementia recorded as the underlying cause of death, with respiratory pathogens recognized as the proximate cause. This would then result in an observed reduction in dementia deaths with the reduced circulation of respiratory pathogens in 2020.

The absence of increases in total coronary heart disease and cerebrovascular deaths contrasts with increases noted in the USA,⁶ UK⁸ and Italy.⁷ Considering ways in which the Australian experience differed from the international experience (e.g. relatively preserved access to and use of health care services³⁸), our finding suggests that observed increases elsewhere may relate to health system overload and changes in health-seeking behaviour, as well as underascertainment of COVID-19 deaths.³⁷ Reductions in primary care contacts for cardiovascular disease and diabetes were observed in the UK³⁹ and in emergency department presentations across a wide range of severities in Italy.⁷

There were increased total deaths from diabetes in Australia as were observed in Italy,⁷ and Norway during the first wave.⁴⁰ In the latter report, which focuses on the effects of lockdown (there were 216 COVID-19 deaths during the study period), the authors speculated that the observed 45% increase in diabetes deaths may have been due to some patients with diabetes inappropriately avoiding health care. This explanation that may also apply to

the Australian findings, a hypothesis supported by data showing increases in diabetes deaths coincident with the two periods of stay-at-home orders (lockdowns) in the state of Victoria in 2020.⁴¹ An alternative hypothesis is that the excess diabetes deaths could represent undetected COVID-19 deaths.²⁸ Further research into the observed increase in diabetes deaths in Australia and elsewhere may yield insights into these and other hypotheses.

There are a number of limitations to our study. We excluded deaths referred to a coroner, including suicides, road traffic accidents and sudden deaths (many of which are due to ischaemic heart disease). The ABS recently released a report on the leading causes of death for 2020 which includes both doctor- and coroner-certified deaths, with findings in keeping with those of the current analysis (seasonal trends were not examined in that report).⁴² In addition, they reported decreases in deaths due to both suicides and road traffic accidents in Australia in 2020. The data in the ABS report indicate that the proportion of overall deaths referred to the coroner (approximately 11%) and of ischaemic heart disease deaths (approximately 18%) did not change for 2020 compared with previous years, supporting the validity of our findings for doctor-certified deaths.

We did not account for competing risks in our analysis of cause-specific deaths, specifically that a decrease in respiratory deaths may result in increased deaths from non-respiratory causes, making our estimates for reductions in non-respiratory deaths conservative (and our estimate for increase in diabetes deaths an overestimate). We also did not account for the time-changing age profile of the population and the slowing in population growth (due to no overseas migration during the pandemic).⁴³ It will be important to calculate age-standardized mortality rates once new 2021 Census data become available to enumerate the underlying Australian population. However, it seems unlikely that a changed population structure in 2020 would account for our findings. We anticipate that the main change in the population structure would be fewer young adults than before the pandemic (due to border restrictions preventing entry of international students), with relative preservation of the older age groups in the Australian population. The Australian Actuaries Institute report allowed for estimated changes in the size and age structure of the Australian population, and had similar findings to our analysis.²⁸

We were unable to combine stratifications by state, age, sex and cause to explore whether differences in overall mortality between states or age groups might relate to differences in causes of death. Finally, although the data released by the ABS in November 2021 are of high quality, they remains provisional. ABS records suggest 97% of

deaths are recorded within 3 months of occurrence and over 99% by 5 months,⁴² suggesting minimal (<1%) impact of incomplete reporting on key measures in this study.

Australia was one of few countries to experience significant suppression of COVID-19 spread in 2020, through a complex intervention consisting of travel restrictions, testing, tracing and isolation, periods of stay at home public health orders, and quarantine requirements. Other contributing factors to the successful response include being an island nation with a relatively small and geographically dispersed population. There have also been adoption of a number of behavioural changes including staying home from work (and school) if symptomatic with a respiratory infection, improved hygiene through hand washing and sanitizer, and increased use of face masks (mandated indoors and on public transport during outbreaks in 2020). By exploring cause of death data, this study contributes to a growing understanding of the causal pathways explaining observed mortality reductions associated with successful suppression, which may be attributable to reductions in the number of circulating respiratory pathogens.

Although international variation in experience with the COVID-19 pandemic constitutes a 'natural experiment', this study out of necessity compares the effect of a composite and time-varying intervention with other complex interventions imposed in different populations worldwide. Further, whereas mortality was reduced overall in Australia, this benefit may not have applied equally to underserved subgroups. Additional studies are required to explore the effects of the 2020 pandemic and associated societal changes. Further research could investigate changes in morbidity and mortality from a wider range of illnesses and populations and explore the long-term effects of these sudden societal and behavioural changes whose final impact remains to be seen. Longer term studies may also explore the impacts of delayed health care such as cancer screening.³⁷

Conclusions

In conclusion, public health measures adopted in Australia during 2020 were associated with an overall reduction in all-cause mortality, due to reductions in a number of non-COVID diseases. Our results support the need for increased uptake of existing interventions to prevent respiratory infections, including vaccination programmes, and suggest potential benefits of retaining some of the behavioural (e.g. improved hygiene, staying at home when symptomatic) and policy (e.g. flexibility to work from home where possible, improved ventilation of workplaces and schools) changes, in the long term.

Ethics approval

In this negligible risk research study, we analysed publicly available datasets of non-identifiable aggregated data, and our investigation was therefore exempt from formal ethics review.

Data availability

The data underlying this article are available in the Australian Bureau of Statistics Provisional Mortality Statistics, at [<https://www.abs.gov.au/statistics/health/causes-death/provisional-mortality-statistics>].

Supplementary data

Supplementary data are available at *IJE* online.

Author contributions

G.G. contributed to conceptualization, did the data analysis, contributed to data interpretation and wrote the original draft of the manuscript. L.Z. did the data analysis, contributed to data interpretation, contributed to supervision and reviewed and edited the manuscript. A.H. contributed to data interpretation, contributed to supervision and reviewed and edited the manuscript. K.B. conceived of the study, contributed to data interpretation, was primary supervisor and reviewed and edited the manuscript.

Funding

There was no specific funding for the study. K.B. is supported by an Australian National Health and Medical Research Council (NHMRC) Investigator Grant (#1174523).

Conflict of interest

None declared.

References

1. Fineberg HV. The toll of COVID-19. *JAMA* 2020;324:1502–03.
2. Appleby J. UK deaths in 2020: how do they compare with previous years? *BMJ* 2021;373:n896.
3. Cerda Thomas R. [Excess mortality during the COVID-19 pandemic, a narrative review]. Exceso de mortalidad durante la pandemia de COVID-19, revision narrativa. *Rev Med Chil* 2020; 148:1647–51.
4. Piccininni M, Rohmann JL, Foresti L, Lurani C, Kurth T. Use of all cause mortality to quantify the consequences of covid-19 in Nembro, Lombardy: descriptive study. *BMJ* 2020;369:m1835.
5. Rivera R, Rosenbaum JE, Quispe W. Excess mortality in the United States during the first three months of the COVID-19 pandemic. *Epidemiol Infect* 2020;148:e264.
6. Ahmad FB, Anderson RN. The Leading Causes of Death in the US for 2020. *JAMA* 2021;325:1829–30.
7. Santi L, Golinelli D, Tampieri A *et al.* Non-COVID-19 patients in times of pandemic: Emergency department visits, hospitalizations and cause-specific mortality in Northern Italy. *PLoS One* 2021;16:e0248995.
8. Wu J, Mamas MA, Mohamed MO *et al.* Place and causes of acute cardiovascular mortality during the COVID-19 pandemic. *Heart* 2021;107:113–19.
9. Currie JM, Schnell MK, Schwandt H, Zhang J. Trends in drug overdose mortality in Ohio during the first 7 months of the COVID-19 pandemic. *JAMA Netw Open* 2021;4:e217112.
10. Pirkis J, John A, Shin S *et al.* Suicide trends in the early months of the COVID-19 pandemic: an interrupted time-series analysis of preliminary data from 21 countries. *Lancet Psychiatry* 2021;8: 579–88.
11. Kung S, Doppen M, Black M, Hills T, Kearns N. Reduced mortality in New Zealand during the COVID-19 pandemic. *Lancet* 2021;397:25.
12. Vaupel JW, Aburto JM, Boucher M-PB *et al.* Danish Covid19 Policies Reduced Overall Mortality. Rockwool Fonden, 2020. <https://www.rockwoolfonden.dk/kommentarer/danish-covid19-policies-reduced-overall-mortality/> (24 June 2020, date last accessed).
13. Kontis V, Bennett JE, Rashid T *et al.* Magnitude, demographics and dynamics of the effect of the first wave of the COVID-19 pandemic on all-cause mortality in 21 industrialized countries. *Nat Med* 2020;26:1919–28.
14. Sullivan SG, Carlson S, Cheng A *et al.* Where has all the influenza gone? The impact of COVID-19 on the circulation of influenza and other respiratory viruses, Australia, March to September 2020. *Eurosurveill* 2020;25:2001847.
15. Ioannidis JPA. Global perspective of COVID-19 epidemiology for a full-cycle pandemic. *Eur J Clin Invest* 2020;50:e13423.
16. Douglas M, Katikireddi SV, Taulbut M, McKee M, McCartney G. Mitigating the wider health effects of covid-19 pandemic response. *BMJ* 2020;369:m1557.
17. Harrison G, Newport D, Robbins T, Arvanitis TN, Stein A. Mortality statistics in England and Wales: the SARS-CoV-2 paradox. *J Int Med Res* 2020;48:300060520931298.
18. Stanaway F, Irwig LM, Teixeira-Pinto A, Bell KJ. COVID-19: estimated number of deaths if Australia had experienced a similar outbreak to England and Wales. *Med J Aust* 2021;214:95–e1.
19. Australian Bureau of Statistics. Provisional Mortality Statistics (Reference *P-period Jan 2020-Aug 2021*). <https://www.abs.gov.au/statistics/health/causes-death/provisional-mortality-statistics> (09 December 2021, date last accessed).
20. Pink B, Australian Bureau of Statistics. 1205.0.55.001 Information Paper. *Cause of Death Certification Australia*. Canberra,; 2008. <https://www.abs.gov.au/AUSSTATS/abs@.nsf/DetailsPage/1205.0.55.0012008?OpenDocument> (09 December 2021, date last accessed).
21. Australian Bureau of Statistics. *Guidance for Certifying Deaths due to COVID-19*. Canberra, 2020. <https://www.abs.gov.au/AUSSTATS/abs@.nsf/Lookup/1205.0.55.001Main+Features12008?OpenDocument> (09 December 2021, date last accessed).
22. Bernal JL, Cummins S, Gasparrini A. Interrupted time series regression for the evaluation of public health interventions: a tutorial. *Int J Epidemiol* 2017;46:348–55.
23. Ver Hoef JM, Boveng PL. Quasi-Poisson vs. negative binomial regression: how should we model overdispersed count data? *Ecology* 2007;88:2766–72.
24. R Core Team. *R: A Language and Environment for Statistical Computing*. Vienna: R Foundation for Statistical Computing, 2019.

25. Barnett AG, Dobson AJ, *Analysing Seasonal Health Data. Statistics for Biology and Health*. Berlin, Heidelberg: Springer-Verlag, 2010.
26. UCLA: Statistical Consulting Group. *How Can I Estimate the Standard Error of Transformed Regression Parameters in R Using the Delta Method?* 2021. <https://stats.idre.ucla.edu/r/faq/how-can-i-estimate-the-standard-error-of-transformed-regression-parameters-in-r-using-the-delta-method/> (09 December 2021, date last accessed).
27. Australian Bureau of Statistics. *Measuring Excess Mortality in Australia During the COVID-19 Pandemic*. 2020. <https://www.abs.gov.au/articles/measuring-excess-mortality-australia-during-covid-19-pandemic> (09 December 2021, date last accessed).
28. Cutter K, Lang J, Lyon R. *Impact of COVID-19 on Mortality and Morbidity in 2020*. 2021. <https://actuaries.asn.au/Library/Miscellaneous/2021/ResearchNote3.pdf> (09 December 2021, date last accessed).
29. Canudas-Romo V, Houle B, Adair T. Quantifying impacts of the COVID-19 pandemic on Australian life expectancy. *Int J Epidemiol* 2022; doi: 10.1093/ije/dyab273. Online ahead of print.
30. Catalano R, Casey JA, Bruckner TA, Gemmill A. Non-COVID-19 deaths after social distancing in Norway. *Eur J Epidemiol* 2020;35:1021–24.
31. Mills EHA, Møller AL, Gnesin F *et al*. National all-cause mortality during the COVID-19 pandemic: a Danish registry-based study. *Eur J Epidemiol* 2020;35:1007–19.
32. Shah SA, Quint JK, Nwaru BI, Sheikh A. Impact of COVID-19 national lockdown on asthma exacerbations: interrupted time-series analysis of English primary care data. *Thorax* 2021;76:860–66.
33. Clar C, Oseni Z, Flowers N, Keshtkar-Jahromi M, Rees K. Influenza vaccines for preventing cardiovascular disease. *Cochrane Database Syst Rev* 2015;CD005050.
34. Woolf SH, Chapman DA, Sabo RT, Weinberger DM, Hill L, Taylor DDH. Excess deaths from COVID-19 and other causes, March-July 2020. *JAMA* 2020;324:1562–64.
35. Woolf SH, Chapman DA, Sabo RT, Weinberger DM, Hill L. Excess deaths from COVID-19 and other causes, March-April 2020. *JAMA* 2020;324:510–13.
36. Wu J, Mafham M, Mamas MA *et al*. Place and underlying cause of death during the COVID-19 pandemic: retrospective cohort study of 3.5 million deaths in England and Wales, 2014 to 2020. *Mayo Clin Proc* 2021;96:952–63.
37. Whittaker C, Walker PGT, Alhaffar M *et al*. Under-reporting of deaths limits our understanding of true burden of covid-19. *BMJ* 2021;375:n2239.
38. Bell K, Stanaway F, McCaffery K, Shirley M, Carter S. Potential benefits and harms from disruption to cancer screening and other healthcare services. *Public Health Res Pract* 2022; In press.
39. Mansfield KE, Mathur R, Tazare J *et al*. Indirect acute effects of the COVID-19 pandemic on physical and mental health in the UK: a population-based study. *Lancet Digital Health* 2021;3:e217–30.
40. Raknes G, Strøm MS, Sulo G, Øverland S, Roelants M, Juliusson PB. Lockdown and non-COVID-19 deaths: Cause-specific mortality during the first wave of the 2020 pandemic in Norway. A population-based register study. *BMJ Open* 2021;11:e050525.
41. Australian Bureau of Statistics. *Measuring Excess Mortality in Victoria During the COVID-19 Pandemic*. 2021. <https://www.abs.gov.au/articles/measuring-excess-mortality-victoria-during-covid-19-pandemic#all-cause-mortality-in-victoria-doctor-certified-deaths-> (09 December 2021, date last accessed).
42. Australian Bureau of Statistics. Causes of Death, Australia. 2020. <https://www.abs.gov.au/statistics/health/causes-death/causes-death-australia/2020> (29 September 2021, date last accessed).
43. Charles-Edwards E, Wilson T, Bernard A, Wohland P. How will COVID-19 impact Australia's future population? A scenario approach. *Appl Geogr* 2021;134:102506.