

JACQUELINE GOTHE

Basilica Chryssopolitissa


2011 | *Who has the amphora handle? Responses to*

Cyprus, FCA Gallery, The University of Wollongong

2013 | *Response to Cyprus, CCANESA, The University of Sydney*

Basilica Chryssopolitissa

Photography by Jacqueline Gothe



In 2010 Jacqueline Gothe travelled with a Senior Artists Research Forum at the University of Wollongong to participate in an interdisciplinary research project in collaboration with University of Sydney Department of Archaeology at Paphos in Cyprus. As part of an interdisciplinary team of archaeologists, artists, performance artists and photographers Jacqueline Gothe documented the position of thirty-two Corinthian capitals that had been moved from the Theatre at Paphos to the Basilica Chryssopolitisa. To date there is no existing record of the placements of the capitals.

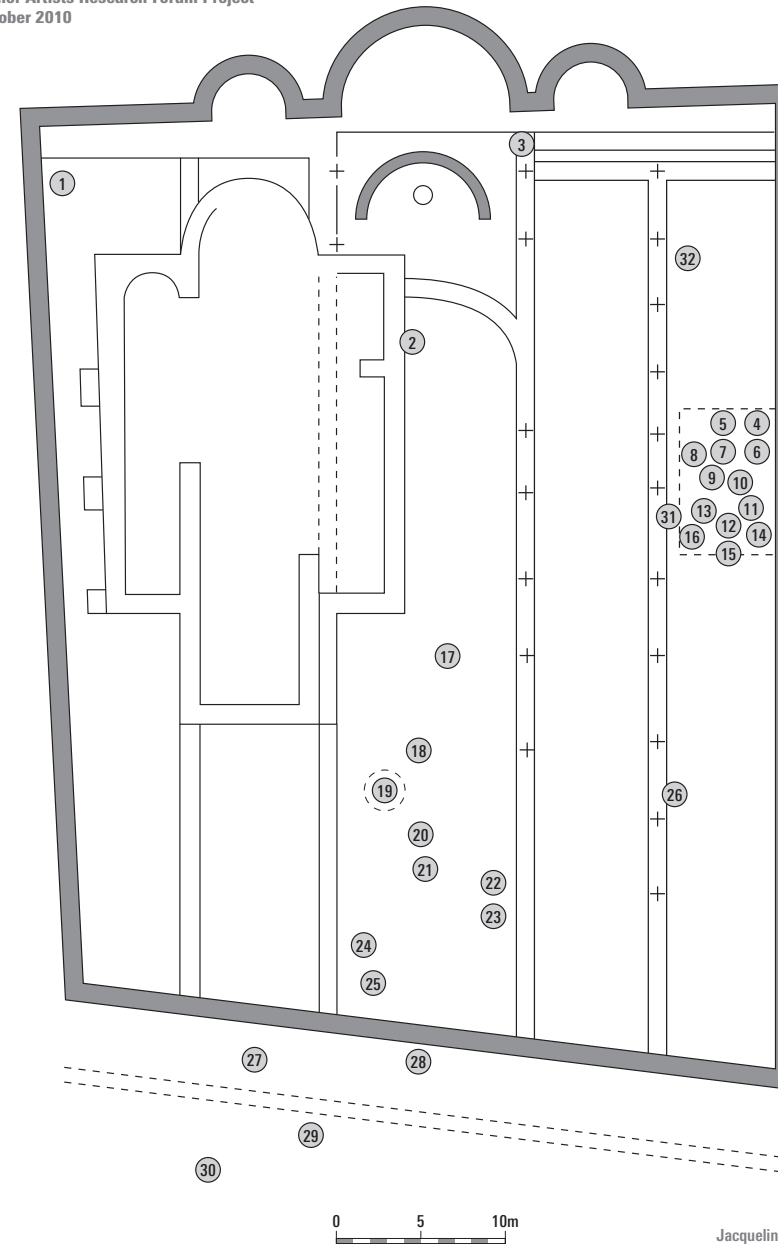
Following Gothe's mapping of the position of the capitals each capital was measured, drawn and photographed for the archaeological team. This record of the positions of the capitals was included in the exhibition opened on 17 August 2011 at the Faculty of Creative Arts Gallery at University of Wollongong as part of the exhibition curated by Professor Diana Wood Conroy 'Who has the amphora handle?'

In 2013 The Australian Archaeological Institute (AAIA) hosted an exhibition titled 'Response to Cyprus' at the Centre of Classical and Near Eastern Studies of Australia (CCANESA). 'Response to Cyprus' curated by Professors Craig Barker and Diana Wood Conroy includes the map of the positions of the capitals in the Basilica Chryssopolitisa with the photographs by Derek Kreckler and drawings of the capitals by Diana Wood Conroy created for Nea Paphos Theatre Excavation in Cyprus. The project represents the culmination of eighteen years of collaborations between artists from University of Wollongong and archaeologists at the University of Sydney and its Nicholson Museum.



1.

Basilica Chryssopolitissa, Paphos
Plan of position of Corinthian column capitals from Paphos Theatre, Cyprus
Senior Artists Research Forum Project
October 2010



2.

1. Corinthian capitals Basilica Chryssopolitissa
Photography by Jacqueline Gothe

2. Jacqueline Gothe Positional Guide for Corinthian Capitals
Basilica Chryssopolitissa, Paphos (2010)

Plan of position of Corinthian column capitals from Paphos Theatre, Cyprus

Jacqueline Gothe 2010

JACQUELINE GOTHE
Basilica Chryssopolitissa



Corinthian capitals Basilica Chryssopolitissa
Photography by Jacqueline Gothe

Exhibitions

Who has the amphora handle? Responses to Cyprus

17 August to 8th September
FCA Gallery

Closing event in Postgraduate Week
Thursday 8th September by the Vice-Chancellor Professor Gerard Sutton at 12.30pm.

Senior Artists Research Forum:

Nikki Heywood, Jacqueline Gothe, Derek Kreckler, Tim Maddock, Deborah Pollard, Jacky Redgate, Lawrence Wallen with Penny Harris and Diana Wood Conroy

The Senior Artists Research Forum (SARF) offers leading artists the opportunity to develop a research project that reflects on their existing body of work in order to achieve a PhD or Doctor of Creative Arts degree (DCA) within 12 to 36 months. Candidates have a substantial national/international reputation for highly resolved and innovative work and many hold senior academic positions or are noted independent practitioners. The focus of study is the interaction of theory, criticism and practice from a creative perspective, building on substantial skill and experience. A Vice-Chancellor's Challenge Grant has permitted intensive seminars and excursions since the beginning of 2010.

Research retreat to Cyprus, October 2010

SARF visited Cyprus to understand the scope of their work in the context of an island with a highly developed archaeological and art history (from Chalcolithic to Byzantine) as well as a postcolonial focus on a bitter past with Britain and Turkey.

Since 1996 Professor Diana Wood Conroy has taken students and staff from the Faculty of Creative Arts to join the University of Sydney's Paphos Theatre Excavation in Cyprus. The excavation has welcomed the interaction of artists and archaeologists through the enlightened scholarship of its Director Professor Richard Green and Associate Director Dr Craig Barker.

Nikki Heywood, Tim Maddock and Deborah Pollard engaged with trench excavation, while Derek Kreckler and Jacky Redgate undertook the documentation of architectural elements such as Corinthian column capitals. Jacqueline Gothe mapped the Basilica Chryssopolitissa near the theatre in Paphos, while Lawrence Wallen and Diana Wood Conroy worked on drawings of acanthus-leaved marble capitals. Penny Harris scrutinised ancient bronzes. The process of engaging with the excavation of ancient architecture, analysis of artefacts and Byzantine art is a catalyst for looking freshly at the contemporary world.

The exhibition *Who has the amphora handle?* explores responses to Cyprus through collaboration and interaction between visual artists and performers.

**

Admission is free to all galleries at the Faculty of Creative Arts.
Gallery Opening Hours are 9am–5pm, Monday to Friday

**

Location:
FCA Gallery
Faculty of Creative Arts
Upstairs, Building 25
University of Wollongong

**

Parking: Pay and Display parking is available in the Western Carpark for visitors to the University.

**

For further information or sales enquiries contact the
Faculty of Creative Arts
Phone: 02 4221 3996
Email: fca_enquiries@uow.edu.au

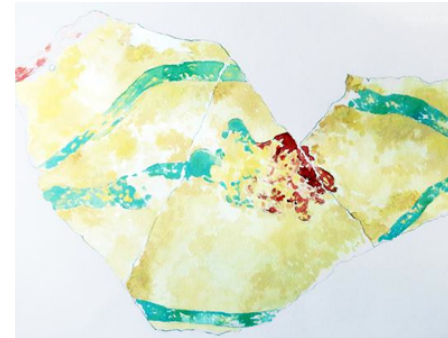
Last reviewed: 22 February, 2012



The Australian Archaeological Institute at Athens

Home Programs Events Membership Athens Hostel Contact Us

Exhibition Launch



Response to Cyprus

10 July 2013 6:00 PM, for 6:30pm

Wednesday, 10 July 2013, 6 for 6:30pm
in the CCANESA Boardroom

FREE (Bookings Required, Please click here)

The Australian Archaeological Institute is hosting the first exhibition held in the revamped exhibition space in the foyer of the Centre of Classical and Near Eastern Studies of Australia (CCANESA).

"Response to Cyprus" developed out of the participation of the Senior Artists' Research Forum (SARF) from the University of Wollongong in the Nea Paphos Theatre Excavation in Cyprus in 2010. The project represented the culmination of eighteen years of collaborations between artists in Wollongong and archaeologists at the University of Sydney and its Nicholson Museum.

The Senior Artists' Research Forum, co-ordinated by Professor Diana Wood Conroy, offered leading artists at UOW the opportunity to develop a research project that reflected on their existing body of work in order to achieve a PhD or Doctor of Creative Arts degree (DCA) within 12 to 36 months. SARF worked on the Paphos excavation in October 2010 in order to understand a wider parameter for their research, in an island with a highly developed archaeological and art history as well as a postcolonial focus on a bitter past.

This exhibition is a parallel group of contemporary artworks to those presently on show in "Aphrodite's Island: Australian Archaeologists in Cyprus", Nicholson Museum.

- Jacqueline Gothe, visual communicator and designer, Senior Lecturer,

Exhibition Launch

7/09/14

1. Announcement of the exhibition response to Cyprus, FCA Gallery in Wollongong

2. Announcement of the exhibition at The Centre of Classical and Near Eastern Studies

Weblink:

<http://www.aiaa.chass.usyd.edu.au/Events/Entries/2013/http://lha.uow.edu.au/taem/news/UOW152567.html>